

BRS-82

Bi-folding
door system.

The **BRS-82** bi-folding door stands out for its minimalist design and advanced functionality. Its structure allows for maximum natural light entry, creating bright, spacious, and connected environments.

In its Slim version, featuring an exclusive central profile of only 109 mm, it increases the glazed surface and reinforces the visual connection between interiors and exteriors.

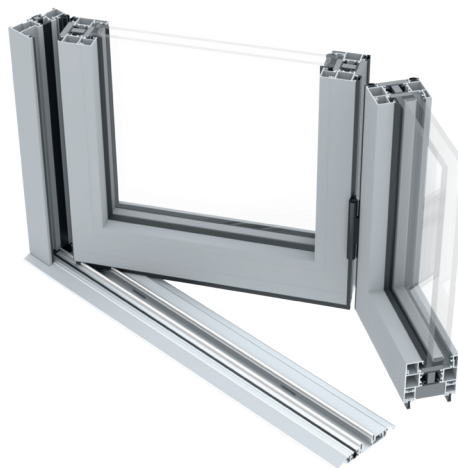
Its installation is flexible, with the option of a traditional frame or a 15 mm low threshold, which improves accessibility.

With excellent thermal insulation ($U_w 1,1 \text{ W/m}^2\text{K}$) and multiple opening configurations, including an open-in door, the **BRS-82** offers comfort, energy efficiency, and style in every detail.



Features

- Maximum height of 3000 mm and glazing thickness up to 52 mm
- Ultra-slim interlock of only 109 mm
- U values as low as $1.1 \text{ W/m}^2\text{K}$
- Low threshold option for total accessibility
- High-durability and heavy-duty bifold hardware of up to 120 kg per sash
- Configurations from 1 to 14 panels



TECHNICAL FEATURES

Design

The BRS-82 excels due to its elegant and refined design. Its Slim version, with a central profile of only 109 mm, combines a minimalist style with maximum functionality. Available with a perimeter frame or a low threshold, it ensures total accessibility in any space.

Features

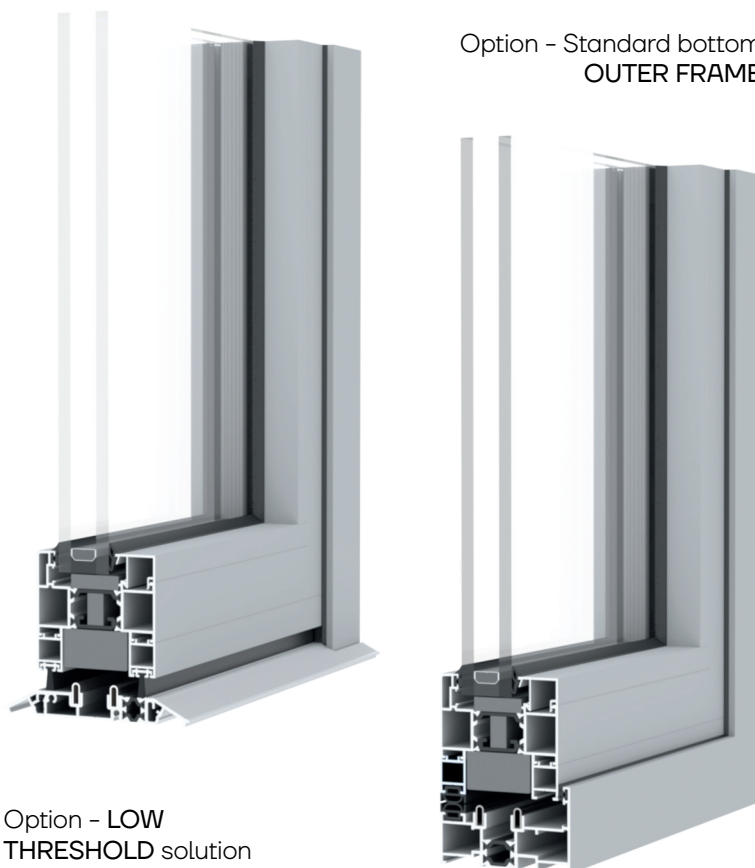
Regarding technical features, the maximum recommended sash dimensions are 1200x3000 mm, allowing a maximum weight of up to 120 kg and a maximum glazing thickness of 52 mm.

Performance

The BRS-82 bi-folding door provides technical characteristics that ensure excellent thermal insulation, in addition to optimal weather-tightness, achieving outstanding values in AEV tests (Class 4 / E750 / C2) and thermal transmittance (U_w : up to 1,1 W/m²K).

Possibilities

Designed to offer functional, robust, and durable doors, it provides multiple installation options. From a practical open-in door to configurations with up to 14 sashes and 3 meters in height, this aluminum bi-folding door adapts to any architectural project.



Recommended maximum dimensions (LxH)*	1200x3000 mm
Recommended maximum weight*	120 kg
Maximum glazing thickness	52 mm
Polyamide	20/32 mm
Thermal transmittance U_w (up to)**	1,1 W/m ² K
Thermal Transmittance U_f **	2,2 W/m ² K

AEV results for a 3-sash door of 2700x2450 mm

* Per sash

** For a 3-sash door of 2700x2450 mm

