

**EXLABESA**  
INDUSTRY

Massive. Beautiful.  
Efficient.



Standards  
catalog

USA - 12/2024



## **Exlabesa Extrusion Tifton, Inc.**

250 Southwell Blvd.  
PO Box 7550 - 31793  
Tifton, GA. 31794  
Tel. +229 382 7330  
[www.exlabesa.com](http://www.exlabesa.com)



*American Aluminum Association Standard Tolerances Apply*

**Exlabesa** prohibits the total or partial reproduction of this catalogue by any written means, as well as magnetic or electronic media, without our explicit and written authorization.  
**Exlabesa** reserves the right to modify, improve or eliminate without prior notice any of the products presented in this catalogue.  
**Exlabesa** is not responsible for any possible errors that may occur in this catalogue.

**EXLABESA**  
INDUSTRY

# Extruding and shaping your world

At Exlabesa we want to make aluminium a solution that allows the world to have the shape it needs, discovering new ways for the industry, making the impossible, possible.

We make true the needs, dreams and aspirations of those who surround us. Inspiring new possibilities, extruding and giving impossible shapes to aluminium, with the capacity of a giant, and the precision of those who take care of the details, to help you get where nobody has been before.

We design, research, extrude and manufacture the perfect solution to help you in making everything you can imagine possible, with the conviction, experience and certainty of making it happen, thanks to our experience, inimitable production capabilities, state-of-the-art technology and the best talent in the industry ready to make the impossible, possible.

Massive. Beautiful.  
Efficient.

You inspire the energy  
that moves us,  
we shape the world  
that inspires you

# Borders? They don't exist.

## Exlabesa Extrusion Tifton

In 2011, Exlabesa made a move to compete globally and enter the largest aluminum market in the world - it acquired the Tifton Extrusions, Inc. manufacturing plant with a long history of aluminum extrusion in Tifton (Georgia, USA). The factory was established in 1966, and thus ideally suited to our company in terms of experience, providing the foundation for a new common milestone.

Over those years, Exlabesa Extrusion Tifton, Inc. has expanded and diversified its marketplace by investing in 5 new extrusion presses equipped with the latest technology and new product lines, allowing the company to take a significant position in a variety of sectors such as construction, architecture, transportation, industry, automotive and agriculture.

- 5 extrusion presses
- Alloys: 6005, 6005A, 6060, 6061, 6063, 6101, 6463, 6705
- Tempers: T1, T3, T4, T5, T52, T6, T6511
- Annual production capacity: 65 million lbs.
- Maximum diameter of hollow profiles: up to 12"
- Maximum diameter of solid profiles: up to 14"
- Maximum weight per profile: 6 lbs./ft
- Maximum length of extruded profile: 53 ft
- 1 precision cutting center
- 25' electrostatic paint: wet paint, AAMA 2603 & 2604
- Punching line

Massive. Beautiful.  
Efficient.



# Empowering industries

## Market segments

The perfect choice for all kind of industries, answering in a satisfactory way to the demands of each one.

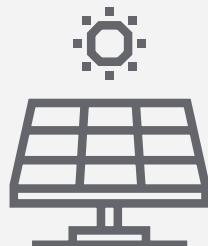
Aluminum is light and strong, as well as flexible and ductile, making it one of the highest quality and most versatile materials on the market.

Our capabilities allow us to offer a wide range of high-quality products to a wide variety of clients from different sectors. We are able to manufacture totally customized profiles to suit each project from large to small pieces, taking a significant position in a variety of sectors such as construction, architecture, transportation, industry, automotive and agriculture.



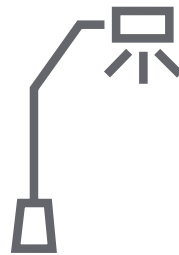
### ARCHITECTURAL

- Windows
- Doors
- Fencing
- Docks
- Stadium seating
- Beams
- Channels
- Tubing
- Curtain Walls
- Store fronts



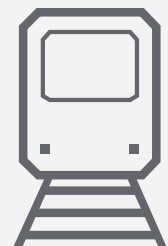
### DISTRIBUTION

- Rod and bar
- Angles
- Channels
- Pipe and tube



### ELECTRICAL

- Connectors
- Bus bar
- Transmission
- Cable tray
- Heat sink
- Air strips



### TRANSPORTATION

- Semi-trailer
- Bus and train windows
- RV
- Cargo trailer



Massive. Beautiful.  
Efficient.





**Exlabesa Extrusion Tifton, Inc.**

250 Southwell Blvd.  
PO Box 7550 - 31793  
Tifton, GA. 31794  
Tel. +229 382 7330  
[www.exlabesa.com](http://www.exlabesa.com)



*American Aluminum Association Standard Tolerances Apply*

# Standards index

---

11	Flat bar
19	Square bar
23	Hex bar
27	Round rod
31	Angle with sharp corners
37	Angle with inside corners
43	Round tube and schedule pipe
51	Rectangular/square tube (sharp corners)
59	Rectangular/square tube (radius corners)
67	Channel
73	AA channel
77	American standard channel
81	I-beam
85	American standard I-beam
89	Tee
93	American standard tee
97	Zee bar
101	Handrail
107	Miscellaneous

**Exlabesa Extrusion Tifton, Inc.**

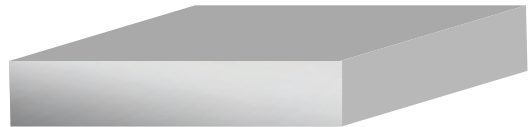
250 Southwell Blvd.  
PO Box 7550 - 31793  
Tifton, GA. 31794  
Tel. +229 382 7330  
[www.exlabesa.com](http://www.exlabesa.com)



*American Aluminum Association Standard Tolerances Apply*

# Flat bar

---

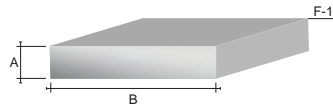


**Exlabesa Extrusion Tifton, Inc.**

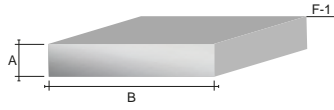
250 Southwell Blvd.  
PO Box 7550 - 31793  
Tifton, GA. 31794  
Tel. +229 382 7330  
[www.exlabesa.com](http://www.exlabesa.com)



*American Aluminum Association Standard Tolerances Apply*

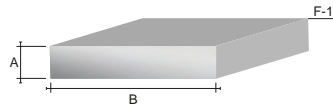


Reference	Description	A	B	F-1	Wt/Ft	Factor
<b>T-10105</b>	1/16x1 flat bar	0.062	1.000	0.015	0.074	28
<b>T-10348</b>	3/32 x 3.559 flat bar	0.094	3.559	0.015	0.401	18
<b>T-10426</b>	.100 x 2 flat bar (full rad ends)	0.100	2.000	0.050	0.237	17
<b>T-10872</b>	.110 x .970 flat bar	0.110	0.970	0.015	0.128	16
<b>T-10680</b>	1/8 x 3/4 flat bar	0.125	0.750	0.015	0.112	15
<b>T-10748</b>	1/8 x 1 flat bar	0.125	1.000	0.015	0.150	15
<b>T-10286</b>	1/8 x 1-1/4 flat bar	0.125	1.250	0.015	0.187	15
<b>T-10433</b>	1/8 x 1-1/2 flat bar	0.125	1.500	0.015	0.225	14
<b>T-10546</b>	1/8 x 2 flat bar	0.125	2.000	0.015	0.300	14
<b>T-12496</b>	1/8 x 2.5 flat bar	0.125	2.500	0.015	0.375	14
<b>T-10547</b>	1/8 x 3 flat bar	0.125	3.000	0.015	0.450	14
<b>T-10797</b>	1/8 x 4 flat bar	0.125	4.000	0.015	0.600	13
<b>T-10864</b>	1/8 x 6 flat bar	0.125	6.000	0.016	0.900	14
<b>T-12520</b>	.140 x 2.500 flat bar	0.140	2.500	0.015	0.420	13
<b>T-11239</b>	.156 x .750 flat bar (full rad ends)	0.156	0.750	0.078	0.134	13
<b>T-10429</b>	.17 x 6 flat bar	0.170	6.000	0.016	1.224	10
<b>T-10061</b>	3/16 x 3/4 flat bar	0.188	0.750	0.020	0.169	11
<b>T-10822</b>	3/16 x 1 flat bar	0.188	1.000	0.015	0.225	10
<b>T-10591</b>	3/16 x 1-1/2 flat bar	0.188	1.500	0.015	0.338	10
<b>T-10592</b>	3/16 x 2 flat bar	0.188	2.000	0.015	0.451	10
<b>T-10064</b>	3/16 x 3 flat bar	0.188	3.000	0.015	0.674	9
<b>T-10637</b>	3/16 x 4 flat bar	0.188	4.000	0.015	0.902	9
<b>T-10647</b>	3/16 x 5 flat bar	0.188	5.000	0.015	1.128	9
<b>T-10034</b>	1/4 x 3/4 flat bar	0.250	0.750	0.015	0.225	8
<b>T-10397</b>	1/4 x 1 flat bar	0.250	1.000	0.015	0.300	8

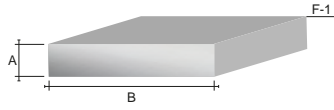


Reference	Description	A	B	F-1	Wt/Ft	Factor
<b>T-10638</b>	1/4 x 1-1/4 flat bar	0.250	1.250	0.015	0.376	8
<b>T-10398</b>	1/4 x 1-1/2 flat bar	0.250	1.500	0.015	0.450	8
<b>T-10028</b>	1/4 x 2 flat bar	0.250	2.000	0.015	0.600	8
<b>T-10783</b>	1/4 x 2 flat bar 1/16 rad corners	0.250	2.000	0.062	0.596	7
<b>T-10798</b>	1/4 x 2-1/2 flat bar	0.250	2.500	0.015	0.750	7
<b>T-10033</b>	1/4 x 3 flat bar	0.250	3.000	0.015	0.900	7
<b>T-10606</b>	1/4 x 3-1/4 flat bar	0.250	3.250	0.015	0.976	7
<b>T-10032</b>	1/4 x 4 flat bar	0.250	4.000	0.015	1.200	7
<b>T-11073</b>	1/4 x 4 flat bar (full rad ends)	0.250	4.000	0.125	1.184	7
<b>T-10593</b>	1/4 x 5 flat bar	0.250	5.000	0.015	1.500	7
<b>T-10342</b>	1/4 x 6 flat bar	0.250	6.000	0.015	1.800	7
<b>T-10693</b>	1/4 x 6 flat bar 1/16 rad corners	0.250	6.000	0.062	1.796	7
<b>T-11080</b>	1/4 x 8 flat bar	0.250	8.000	0.015	2.400	7
<b>T-10452</b>	1/4 x 8-3/4 flat bar 1/16 rad corners	0.250	8.750	0.062	2.621	7
<b>T-10308</b>	5/16 x 5 flat bar	0.312	5.000	0.015	1.872	6
<b>T-12814</b>	3/8 x 1/2 flat bar	0.375	0.500	0.015	0.230	8
<b>T-12815</b>	3/8 x 5/8 flat bar	0.375	0.625	0.015	0.280	7
<b>T-12816</b>	3/8 x 5/8 flat bar	0.375	0.750	0.015	0.340	7
<b>T-10705</b>	3/8 x 1 flat bar	0.375	1.000	0.015	0.450	6
<b>T-11152</b>	3/8 x 1-1/4 flat bar	0.375	1.250	0.015	0.562	6
<b>T-11159</b>	3/8 x 1-1/2 flat bar	0.375	1.500	0.015	0.675	6
<b>T-10548</b>	3/8 x 2 flat bar	0.375	2.000	0.015	0.900	5
<b>T-10657</b>	3/8 x 2-1/2 flat bar	0.375	2.500	0.015	1.125	5
<b>T-10399</b>	3/8 x 3 flat bar	0.375	3.000	0.015	1.350	5
<b>T-10658</b>	3/8 x 4 flat bar	0.375	4.000	0.015	1.800	5





Reference	Description	A	B	F-1	Wt/Ft	Factor
<b>T-10549</b>	3/8 x 5 flat bar	0.375	5.000	0.015	2.250	5
<b>T-10706</b>	3/8 x 6 flat bar	0.375	6.000	0.015	2.700	5
<b>T-11909</b>	3/8 x 8 flat bar	0.375	8.000	0.015	3.600	5
<b>T-11028</b>	.470 x 1.938 flat bar (full rad ends)	0.470	1.938	0.235	1.036	4
<b>T-12512</b>	1/2 x 5/8 flat bar	0.500	0.625	0.015	0.374	6
<b>T-12817</b>	1/2 x 3/4 flat bar	0.500	0.750	0.015	0.450	6
<b>T-10707</b>	1/2 x 1 flat bar	0.500	1.000	0.015	0.600	5
<b>T-10735</b>	1/2 x 1-1/2 flat bar	0.500	1.500	0.015	0.900	4
<b>T-13677</b>	1/2 x 1-3/4 flat bar	0.500	1.750	0.016	1.050	4
<b>T-10594</b>	1/2 x 2 flat bar	0.500	2.000	0.015	1.201	4
<b>T-11142</b>	1/2 x 2-1/4 flat bar	0.500	2.250	0.015	1.350	4
<b>T-10550</b>	1/2 x 2-1/2 flat bar	0.500	2.500	0.015	1.500	4
<b>T-10655</b>	1/2 x 3 flat bar	0.500	3.000	0.015	1.800	4
<b>T-10551</b>	1/2 x 4 flat bar	0.500	4.000	0.015	2.400	4
<b>T-10639</b>	1/2 x 5 flat bar	0.500	5.000	0.015	3.000	4
<b>T-10595</b>	1/2 x 6 flat bar	0.500	6.000	0.015	3.600	4
<b>T-11609</b>	1/2 x 8 flat bar	0.500	8.000	0.015	4.800	4
<b>T-10867</b>	5/8 x 2 flat bar	0.625	2.000	0.125	1.484	3
<b>T-11144</b>	5/8 x 2-1/2 flat bar	0.625	2.500	0.015	1.874	3
<b>T-11145</b>	5/8 x 4 flat bar	0.625	4.000	0.015	3.000	3
<b>T-11146</b>	5/8 x 5 flat bar	0.625	5.000	0.015	3.750	3
<b>T-13678</b>	5/8 x 8 flat bar	0.625	8.000	0.016	6.000	3
<b>T-10866</b>	3/4 x 1 flat bar	0.750	1.000	0.125	0.884	4
<b>T-13681</b>	3/4 x 1-1/2 flat bar	0.750	1.500	0.016	1.350	3
<b>T-13679</b>	3/4 x 1-3/4 flat bar	0.750	1.750	0.016	1.575	3



Reference	Description	A	B	F-1	Wt/Ft	Factor
<b>T-11143</b>	3/4 x 2 flat bar	0.750	2.000	0.015	1.800	3
<b>T-11548</b>	3/4 x 2-1/2 flat bar	0.750	2.500	0.015	2.250	3
<b>T-11280</b>	3/4 x 3 flat bar	0.750	3.000	0.015	2.700	3
<b>T-10636</b>	3/4 x 4 flat bar	0.750	4.000	0.015	3.600	3
<b>T-10836</b>	3/4 x 5 flat bar	0.750	5.000	0.015	4.500	3
<b>T-13685</b>	3/4 x 7 flat bar	0.750	7.000	0.016	6.300	2
<b>T-11160</b>	1 x 2 flat bar	1.000	2.000	0.015	2.400	3
<b>T-11966</b>	1 x 4 flat bar	1.000	4.000	0.015	4.800	2
<b>T-10874</b>	1-1/4 x 2 flat bar	1.250	2.000	0.015	3.000	2
<b>T-13680</b>	1-1/4 x 2-1/4 flat bar	1.250	2.250	0.016	3.375	2
<b>T-13710</b>	1-1/4 x 2-1/2 flat bar	1.250	2.500	0.031	3.749	2



**Exlabesa Extrusion Tifton, Inc.**

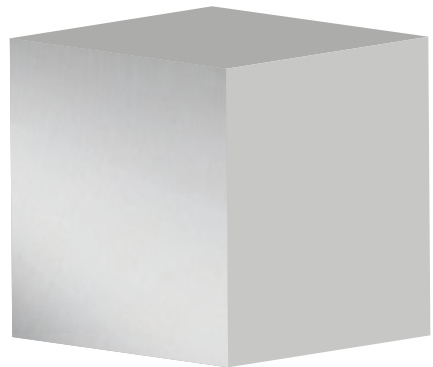
250 Southwell Blvd.  
PO Box 7550 - 31793  
Tifton, GA. 31794  
Tel. +229 382 7330  
[www.exlabesa.com](http://www.exlabesa.com)



*American Aluminum Association Standard Tolerances Apply*

# Square bar

---

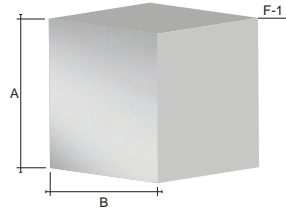


**Exlabesa Extrusion Tifton, Inc.**

250 Southwell Blvd.  
PO Box 7550 - 31793  
Tifton, GA. 31794  
Tel. +229 382 7330  
[www.exlabesa.com](http://www.exlabesa.com)



*American Aluminum Association Standard Tolerances Apply*



Reference	Description	A	B	F-1	Wt/Ft	Factor
<b>T-10760</b>	1/2 square bar	0.500	0.500	0.015	0.300	7
<b>T-11799</b>	5/8 square bar	0.625	0.625	0.015	0.468	5
<b>T-10796</b>	3/4 square bar	0.750	0.750	0.015	0.675	4
<b>T-11271</b>	1 square bar	1.000	1.000	0.015	1.201	3
<b>T-10726</b>	1-1/8 square bar 1/4 rad corners	1.125	1.125	0.250	1.454	3
<b>T-10404</b>	1-1/4 square bar	1.250	1.250	0.015	1.875	3
<b>T-10766</b>	1-1/2 square bar	1.500	1.500	0.015	2.700	2
<b>T-11561</b>	2 square bar	2.000	2.000	0.015	4.800	2

**Exlabesa Extrusion Tifton, Inc.**

250 Southwell Blvd.  
PO Box 7550 - 31793  
Tifton, GA. 31794  
Tel. +229 382 7330  
[www.exlabesa.com](http://www.exlabesa.com)

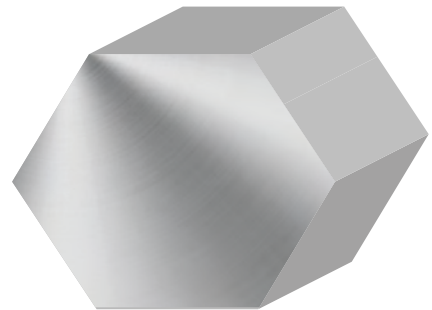


*American Aluminum Association Standard Tolerances Apply*



# Hex bar

---

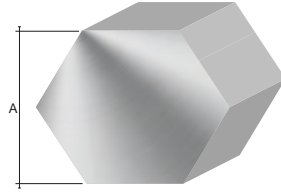


**Exlabesa Extrusion Tifton, Inc.**

250 Southwell Blvd.  
PO Box 7550 - 31793  
Tifton, GA. 31794  
Tel. +229 382 7330  
[www.exlabesa.com](http://www.exlabesa.com)



*American Aluminum Association Standard Tolerances Apply*



Reference	Description	A	Wt/Ft	Factor
<b>T-10800</b>	7/16 hex bar	0.438	0.199	8

**Exlabesa Extrusion Tifton, Inc.**

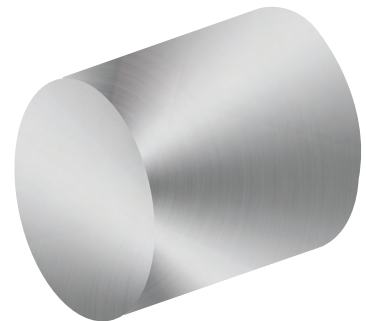
250 Southwell Blvd.  
PO Box 7550 - 31793  
Tifton, GA. 31794  
Tel. +229 382 7330  
[www.exlabesa.com](http://www.exlabesa.com)



*American Aluminum Association Standard Tolerances Apply*

# Round rod

---



**Exlabesa Extrusion Tifton, Inc.**

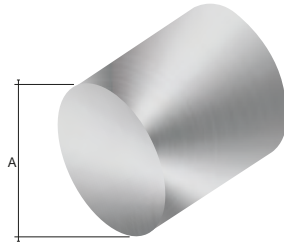
250 Southwell Blvd.  
PO Box 7550 - 31793  
Tifton, GA. 31794  
Tel. +229 382 7330  
[www.exlabesa.com](http://www.exlabesa.com)



*American Aluminum Association Standard Tolerances Apply*

# Round rod

Standards catalog



Reference	Description	A	Wt/Ft	Factor
<b>T-10324</b>	1/2 dia rod	0.500	0.235	7
<b>T-10062</b>	5/8 dia rod	0.625	0.368	5
<b>T-10509</b>	3/4 dia rod	0.750	0.530	4
<b>T-13686</b>	7/8 dia rod	0.875	0.722	4
<b>T-10450</b>	1 dia rod	1.000	0.942	3
<b>T-10865</b>	1-1/4 dia rod	1.250	1.472	3
<b>T-11409</b>	1-5/16 dia rod	1.312	1.622	3
<b>T-10736</b>	1-3/8 dia rod	1.375	1.782	2
<b>T-10510</b>	1-1/2 dia rod	1.500	2.120	2
<b>T-11059</b>	1-3/4 dia rod	1.750	2.886	2
<b>T-10511</b>	2 dia rod	2.000	3.770	2
<b>T-13711</b>	2-1/4 dia rod	2.250	4.771	1
<b>T-11791</b>	2-1/2 dia rod	2.500	5.891	1

**Exlabesa Extrusion Tifton, Inc.**

250 Southwell Blvd.  
PO Box 7550 - 31793  
Tifton, GA. 31794  
Tel. +229 382 7330  
[www.exlabesa.com](http://www.exlabesa.com)

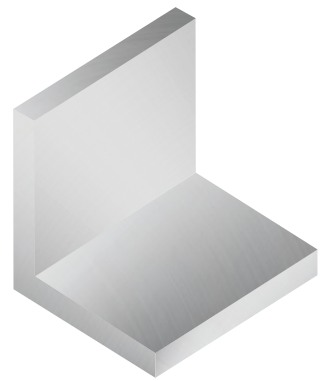


*American Aluminum Association Standard Tolerances Apply*



# Angle with sharp corners

---



**Exlabesa Extrusion Tifton, Inc.**

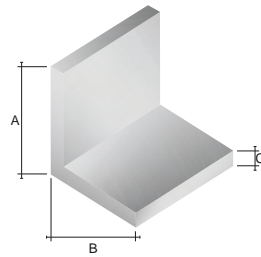
250 Southwell Blvd.  
PO Box 7550 - 31793  
Tifton, GA. 31794  
Tel. +229 382 7330  
[www.exlabesa.com](http://www.exlabesa.com)



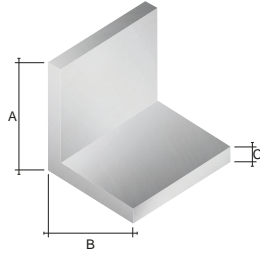
*American Aluminum Association Standard Tolerances Apply*

# Angle with sharp corners

Standards catalog

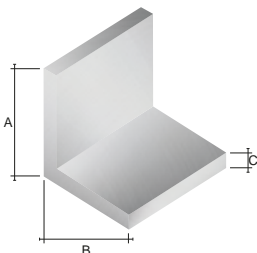


Reference	Description	A	B	C	Wt/Ft	Factor
<b>T-11454</b>	3/8 x 3/4 x .093 wall	0.375	0.750	0.093	0.115	19
<b>T-11063</b>	1/2 x 2-1/4 x .125 wall	0.500	2.250	0.125	0.394	14
<b>T-11535</b>	.697 x 1.250 x .125 wall	0.697	1.250	0.125	0.273	14
<b>T-11671</b>	3/4 x 3/4 x 1/16 wall	0.750	0.750	0.062	0.107	28
<b>T-12082</b>	3/4 x 3/4 x .125 wall	0.750	0.750	0.125	0.206	14
<b>T-13350</b>	1 x 3/4 x 1/16" wall	0.750	1.000	0.063	0.126	28
<b>T-10284</b>	3/4 x 1-1/4 x .080 wall	0.750	1.250	0.080	0.185	22
<b>T-11190</b>	3/4 x 1-1/2 x .050 wall	0.750	1.500	0.050	0.132	34
<b>T-13276</b>	3/4 x 1-1/2 x .050 wall	0.750	1.500	0.050	0.132	34
<b>T-11453</b>	3/4 x 2 x 1/8 wall	0.750	2.000	0.125	0.394	14
<b>T-13350</b>	1 x 3/4 x 1/16" wall	1.000	0.750	0.063	0.130	28
<b>T-11550</b>	1 x 1 x .050 wall Full rad leg ends	1.000	1.000	0.050	0.116	34
<b>T-10519</b>	1 x 1 x 1/16 wall	1.000	1.000	0.062	0.144	28
<b>T-10150</b>	1 x 1 x 1/8 wall	1.000	1.000	0.125	0.281	14
<b>T-13512</b>	1 x 1 x .125W angle-sharp	1.000	1.000	0.188	0.409	10
<b>T-10855</b>	1 x 1-1/2 x .045 wall	1.000	1.500	0.045	0.132	38
<b>T-12524</b>	1 x 1-1/2 x 1/16 wall	1.000	1.500	0.062	0.181	27
<b>T-12657</b>	1 x 1-1/2 x .125	1.000	1.500	0.125	0.360	14
<b>T-11459</b>	1 x 1-3/4 x 1/8 wall	1.000	1.750	0.125	0.393	14
<b>T-10262</b>	1 x 2 x 1/16 wall	1.000	2.000	0.062	0.218	28
<b>T-11257</b>	1 x 2 x .088 wall	1.000	2.000	0.088	0.307	19
<b>T-10263</b>	1 x 2 x 1/8 wall	1.000	2.000	0.125	0.431	14
<b>T-10013</b>	1 x 2-1/2 x 1/16 wall	1.000	2.500	0.063	0.259	27
<b>T-11243</b>	1 x 3 x 1/16 wall	1.000	3.000	0.062	0.293	27
<b>T-10264</b>	1 x 3 x 1/8 wall	1.000	3.000	0.125	0.581	14



Reference	Description	A	B	C	Wt/Ft	Factor
<b>T-10014</b>	1 x 4 x 1/16 wall	1.000	4.000	0.062	0.367	27
<b>T-10402</b>	1 x 4 x 1/8 wall	1.000	4.000	0.125	0.731	14
<b>T-10056</b>	1-1/8 x 2 x 1/16 wall	1.125	2.000	0.062	0.228	27
<b>T-11771</b>	1-1/2 x 1-1/2 x 1/16 wall	1.500	1.500	0.062	0.218	27
<b>T-10151</b>	1-1/2 x 1-1/2 x 1/8 wall	1.500	1.500	0.125	0.431	14
<b>T-10749</b>	1-1/2 x 1-1/2 x 3/16 wall	1.500	1.500	0.188	0.634	9
<b>T-11395</b>	1-1/2 x 1-3/4 x .065 wall	1.500	1.750	0.065	0.247	26
<b>T-13266</b>	1-1/2 x 2 x .063 wall	1.500	2.000	0.063	0.260	27
<b>T-10956</b>	1-1/2 x 2 x 1/8 wall	1.500	2.000	0.125	0.506	14
<b>T-11258</b>	1-1/2 x 3 x .088 wall	1.500	3.000	0.088	0.466	19
<b>T-11413</b>	1-5/8 x 1-3/4 x 1/16 wall	1.625	1.750	0.062	0.246	27
<b>T-10252</b>	2 x 2 x 1/16 wall	2.000	2.000	0.062	0.293	33
<b>T-11000</b>	2 x 2 x 3/32 wall	2.000	2.000	0.093	0.436	18
<b>T-10584</b>	2 x 2 x 1/8 wall	2.000	2.000	0.125	0.581	14
<b>T-11753</b>	2 x 2 x .135 wall	2.000	2.000	0.135	0.626	13
<b>T-10478</b>	2 x 2 x 3/16 wall	2.000	2.000	0.188	0.860	9
<b>T-10360</b>	2 x 2 x 1/4 wall	2.000	2.000	0.250	1.125	7
<b>T-11012</b>	2 x 2-1/2 x 3/16 wall	2.000	2.500	0.188	0.973	9
<b>T-12884</b>	2 x 2.5 x .250	2.000	2.500	0.250	1.270	7
<b>T-10265</b>	2 x 3 x 1/8 wall	2.000	3.000	0.125	0.731	14
<b>T-11216</b>	2 x 3 x 3/16 wall	2.000	3.000	0.188	1.085	9
<b>T-10912</b>	2 x 3 x 1/4 wall	2.000	3.000	0.250	1.426	7
<b>T-11249</b>	2 x 4 x 1/6 wall	2.000	4.000	0.063	0.445	27
<b>T-10266</b>	2 x 4 x 1/8 wall	2.000	4.000	0.125	0.881	14
<b>T-10267</b>	2 x 5 x 1/8 wall	2.000	5.000	0.125	1.031	14

# Angle with sharp corners



Reference	Description	A	B	C	Wt/Ft	Factor
<b>T-10982</b>	2 x 7 x 1/4 wall	2.000	7.000	0.250	2.626	7
<b>T-10782</b>	2-1/2 x 2-1/2 x 1/8 wall	2.500	2.500	0.125	0.731	14
<b>T-12883</b>	2.5 x 2.5 x 3/16	2.500	2.500	0.188	1.082	9
<b>T-11983</b>	2-1/2 x 2-1/2 x 1/4 wall	2.500	2.500	0.250	1.424	7
<b>T-12558</b>	3 x 3 x 1/16 wall	3.000	3.000	0.062	0.442	27
<b>T-10709</b>	3 x 3 x 1/8 wall	3.000	3.000	0.125	0.881	14
<b>T-11833</b>	3 x 5 x 3/16 wall	3.000	5.000	0.188	1.763	9
<b>T-12915</b>	4 x 2 x .250	4.000	2.000	0.250	1.724	7
<b>T-12704</b>	4.0 x 4.0	4.000	4.000	0.125	1.180	14
<b>T-12704</b>	4 x 4 x 1/8 wall	4.000	4.000	0.125	1.181	14
<b>T-11518</b>	4-1/2 x 8-1/2 x 1/4 wall	4.500	8.500	0.250	3.824	8

**Exlabesa Extrusion Tifton, Inc.**

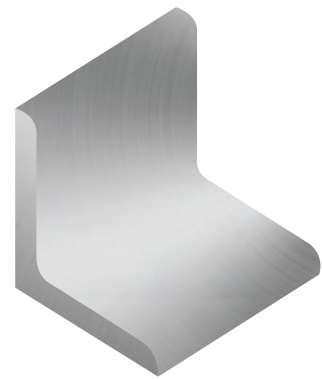
250 Southwell Blvd.  
PO Box 7550 - 31793  
Tifton, GA. 31794  
Tel. +229 382 7330  
[www.exlabesa.com](http://www.exlabesa.com)



*American Aluminum Association Standard Tolerances Apply*

# Angle with round inside corners

---



**Exlabesa Extrusion Tifton, Inc.**

250 Southwell Blvd.  
PO Box 7550 - 31793  
Tifton, GA. 31794  
Tel. +229 382 7330  
[www.exlabesa.com](http://www.exlabesa.com)

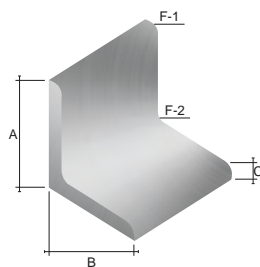


*American Aluminum Association Standard Tolerances Apply*

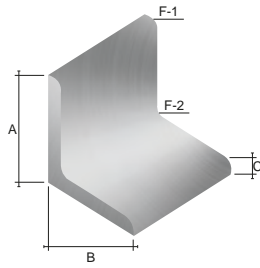


# Angle with round inside corners

Standards catalog



Reference	Description	A	B	C	F-1	F-2	Wt/Ft	Factor
<b>T-10761</b>	3/4 x 3/4 x 1/8 wall	0.750	0.750	0.125	0.094	0.125	0.205	14
<b>T-10489</b>	3/4 x 3 x 1/8 wall	0.750	3.000	0.125	0.125	0.250	0.552	13
<b>T-11035</b>	1 x 1 x 3/32 wall	1.000	1.000	0.094	0.094	0.188	0.220	17
<b>T-10504</b>	1 x 1 x 1/8 wall	1.000	1.000	0.125	0.094	0.125	0.281	14
<b>T-11850</b>	1 x 1 x 1/8 wall Army-Navy angle	1.000	1.000	0.125	0.125	0.188	0.282	13
<b>T-10505</b>	1 x 1 x 3/16 wall	1.000	1.000	0.188	0.094	0.125	0.408	9
<b>T-10795</b>	1 x 1 x 1/4 wall	1.000	1.000	0.250	0.094	0.125	0.524	8
<b>T-11762</b>	1 x 1-1/4 x 1/8 wall	1.000	1.250	0.125	0.125	0.125	0.314	14
<b>T-11801</b>	1 x 1-1/2 x 1/8 wall	1.000	1.500	0.125	0.125	0.156	0.354	14
<b>T-11800</b>	1-1/4 x 2 x 1/8 wall	1.000	2.000	0.125	0.125	0.156	0.350	13
<b>T-11792</b>	1-1/4 x 1-1/4 x 1/16 wall	1.250	1.250	0.063	0.063	0.188	0.192	25
<b>T-10437</b>	1-1/4 x 1-1/4 x 1/8 wall	1.250	1.250	0.125	0.125	0.188	0.430	14
<b>T-10438</b>	1-1/4 x 1-1/4 x 3/16 wall	1.250	1.250	0.188	0.125	0.188	0.510	9
<b>T-10029</b>	1-1/4 x 1-1/4 x 1/4 wall	1.250	1.250	0.250	0.125	0.188	0.676	7
<b>T-10439</b>	1-1/2 x 1-1/2 x 1/8 wall	1.500	1.500	0.125	0.125	0.188	0.432	14
<b>T-10242</b>	1-1/2 x 1-1/2 x 3/16 wall	1.500	1.500	0.188	0.125	0.188	0.635	9
<b>T-10440</b>	1-1/2 x 1-1/2 x 1/4 wall	1.500	1.500	0.250	0.125	0.188	0.810	7
<b>T-11324</b>	1-1/2 x 2 x 3/16 wall	1.500	2.000	0.188	0.125	0.250	0.755	9
<b>T-10848</b>	1-1/2 x 2 x 1/4 wall	1.500	2.000	0.250	0.125	0.188	0.976	7
<b>T-11329</b>	1-3/4 x 1-3/4 x 1/8 wall	1.750	1.750	0.125	0.125	0.188	0.508	13
<b>T-11153</b>	2 x 2 x 3/32 wall	2.000	2.000	0.094	0.094	0.250	0.452	17
<b>T-10441</b>	2 x 2 x 1/8 wall	2.000	2.000	0.125	0.125	0.250	0.572	13
<b>T-10243</b>	2 x 2 x 3/16 wall	2.000	2.000	0.188	0.125	0.250	0.868	9
<b>T-10244</b>	2 x 2 x 1/4 wall	2.000	2.000	0.250	0.125	0.250	1.134	7
<b>T-11854</b>	2 x 2 x 1/4 wall Army-Navy angle	2.000	2.000	0.250	0.250	0.250	1.109	7



Reference	Description	A	B	C	F-1	F-2	Wt/Ft	Factor
<b>T-10596</b>	2 x 2 x 3/8 wall	2.000	2.000	0.375	0.125	0.250	1.639	5
<b>T-11760</b>	2 x 2-1/2 x 3/16 wall	2.000	2.500	0.188	0.125	0.250	0.980	9
<b>T-10552</b>	2 x 3 x 3/16 wall	2.000	3.000	0.188	0.188	0.313	1.093	9
<b>T-10442</b>	2 x 3 x 1/4 wall	2.000	3.000	0.250	0.188	0.313	1.402	7
<b>T-10756</b>	2 x 3 x 3/8 wall	2.000	3.000	0.375	0.188	0.313	2.088	5
<b>T-11982</b>	2 x 3 x 1/2 wall	2.000	3.000	0.500	0.188	0.312	2.707	4
<b>T-10909</b>	2-1/2 x 2-1/2 x 3/16 wall	2.500	2.500	0.188	0.125	0.250	1.093	9
<b>T-10506</b>	2-1/2 x 2-1/2 x 1/4 wall	2.500	2.500	0.250	0.125	0.250	1.433	7
<b>T-12885</b>	2.500 x 3.500 x 1/4 wall	2.500	3.500	0.250	0.250	0.312	1.718	7
<b>T-10734</b>	3 x 3 x 3/16 wall	3.000	3.000	0.188	0.250	0.313	1.310	9
<b>T-10245</b>	3 x 3 x 1/4 wall	3.000	3.000	0.250	0.250	0.250	1.709	7
<b>T-10435</b>	3 x 3 x 3/8 wall	3.000	3.000	0.375	0.250	0.313	2.470	5
<b>T-10553</b>	3 x 3 x 1/2 wall	3.000	3.000	0.500	0.250	0.313	3.293	4
<b>T-10554</b>	3 x 4 x 1/4 wall	3.000	4.000	0.250	0.250	0.375	2.029	7
<b>T-10757</b>	3 x 4 x 3/8 wall	3.000	4.000	0.375	0.250	0.375	2.986	5
<b>T-11761</b>	3 x 5 x 1/4 wall	3.000	5.000	0.250	0.250	0.375	2.329	7
<b>T-10246</b>	4 x 4 x 1/4 wall	4.000	4.000	0.250	0.250	0.375	2.329	7
<b>T-10641</b>	4 x 4 x 3/8 wall	4.000	4.000	0.375	0.250	0.375	3.436	5
<b>T-12526</b>	4 x 6 x 1/4 wall	4.000	6.000	0.250	0.250	0.375	2.929	7
<b>T-11642</b>	4 x 6 x 5/16 wall	4.000	6.000	0.313	0.375	0.500	3.637	5
<b>T-10642</b>	4 x 6 x 3/8 wall	4.000	6.000	0.375	0.250	0.375	4.335	5
<b>T-12882</b>	4 x 4 x 3/8 wall	4.000	4.000	0.375	0.250	0.375	3.436	5

# Angle with round inside corners

Standards catalog

## Notes

**Exlabesa Extrusion Tifton, Inc.**

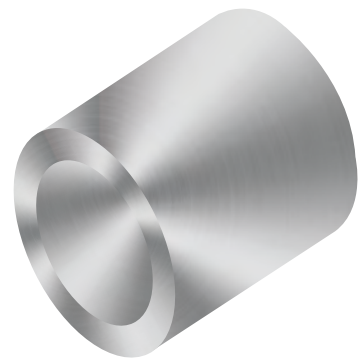
250 Southwell Blvd.  
PO Box 7550 - 31793  
Tifton, GA. 31794  
Tel. +229 382 7330  
[www.exlabesa.com](http://www.exlabesa.com)



*American Aluminum Association Standard Tolerances Apply*

# Round tubes and schedule pipe

---



**Exlabesa Extrusion Tifton, Inc.**

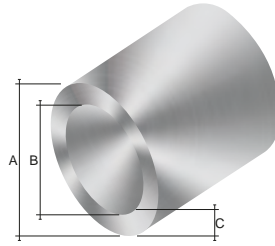
250 Southwell Blvd.  
PO Box 7550 - 31793  
Tifton, GA. 31794  
Tel. +229 382 7330  
[www.exlabesa.com](http://www.exlabesa.com)



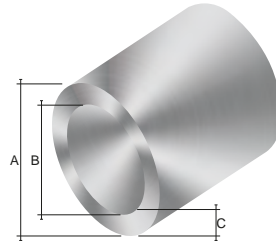
*American Aluminum Association Standard Tolerances Apply*

# Round tube and shedule pipe

Standards catalog



Reference	Sch PIPE	Description	A	B	C	Wt/Ft	Factor
<b>T-50869</b>		1/2 OD x .086 wall	0.500	0.328	0.086	0.133	20
<b>T-52772</b>		.625 OD x .062 wall tube	0.625	1.501	0.062	0.132	27
<b>T-50419</b>		3/4 OD x .083 wall	0.750	0.584	0.083	0.209	20
<b>T-50686</b>		3/4 OD x .072 wall	0.750	0.606	0.072	0.184	23
<b>T-51084</b>		3/4 OD x .062 wall	0.750	0.626	0.062	0.162	27
<b>T-53074</b>		.750 OD Tube w/ cleats	0.750	0.630	0.060	0.157	28
<b>T-50737</b>	χ	.840 OD x .147 wall 1/2" Sch 80 pipe	0.840	0.546	0.147	0.384	11
<b>T-51085</b>	χ	.840 OD x .109 wall 1/2" Sch 40 pipe	0.840	0.622	0.109	0.300	15
<b>T-50084</b>		7/8 OD x 1/16 wall	0.875	0.749	0.063	0.193	26
<b>T-50923</b>		1 OD x 1/8 wall	1.000	0.750	0.125	0.412	13
<b>T-50781</b>		1 OD x 3/32 wall	1.000	0.814	0.093	0.318	18
<b>T-51657</b>		1 OD x 1/16 wall	1.000	0.874	0.063	0.222	27
<b>T-50785</b>		1.030 OD x .245 wall	1.030	0.540	0.245	0.725	7
<b>T-50684</b>		1.050 OD x .140 wall (near 3/4 Sch 80 pipe [.154 wall])	1.050	0.770	0.140	0.480	12
<b>T-50755</b>	χ	1.050 OD x .113 wall 3/4" Sch 40 pipe	1.050	0.824	0.113	0.400	15
<b>T-50420</b>		1-1/8 OD x .080 wall	1.125	0.965	0.080	0.315	21
<b>T-50659</b>		1-1/8 OD x .055 wall	1.125	1.015	0.055	0.222	30
<b>T-51758</b>		1-1/4 OD x 1/8 wall	1.250	1.000	0.125	0.530	13
<b>T-50422</b>		1-1/4 OD x .100 wall	1.250	1.050	0.100	0.434	17
<b>T-50421</b>		1-1/4 OD x .085 wall	1.250	1.080	0.085	0.373	20
<b>T-50558</b>		1-1/4 OD x .065 wall	1.250	1.120	0.065	0.291	26
<b>T-50576</b>		1-1/4 OD x .055 wall	1.250	1.140	0.055	0.248	30
<b>T-50885</b>	χ	1.315 OD x .179 wall 1" Sch 80 pipe	1.315	0.957	0.179	0.767	9
<b>T-50685</b>		1.315 OD x .140 wall	1.315	1.035	0.140	0.620	12
<b>T-50238</b>	χ	1.315 OD x .133 wall 1" Sch 40 pipe	1.315	1.049	0.133	0.593	13

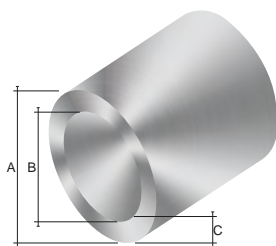


Reference	Sch PIPE	Description	A	B	C	Wt/Ft	Factor
<b>T-50423</b>	X	1.315 OD x .115 wall 1" Sch 30 pipe	1.315	1.085	0.115	0.520	14
<b>T-50444</b>		1-3/8 OD x .085 wall	1.375	1.205	0.085	0.413	20
<b>T-50683</b>		1.400 OD x .100 wall	1.400	1.200	0.100	0.490	17
<b>T-50424</b>		1-1/2 OD x 5/16 wall	1.500	0.876	0.312	1.397	5
<b>T-53523</b>		1.5 OD x 1.21 ID RD Tube	1.500	1.235	0.133	0.683	13
<b>T-50232</b>		1-1/2 OD x 1/8 wall	1.500	1.250	0.125	0.648	13
<b>T-50780</b>		1-1/2 OD x 3/32 wall	1.500	1.314	0.093	0.493	18
<b>T-50559</b>		1-1/2 OD x .065 wall	1.500	1.370	0.065	0.352	26
<b>T-50122</b>		1.595 OD x .516 wall with alignment mark on OD	1.595	0.563	0.516	2.099	3
<b>T-50738</b>	X	1.660 OD x .191 wall 1-1/4" Sch 80 pipe	1.660	1.278	0.191	1.057	9
<b>T-50031</b>	X	1.660 OD x .140 wall 1-1/4" Sch 40 pipe	1.660	1.380	0.140	0.802	12
<b>T-52744</b>		1.660 x .128 round tube	1.660	1.404	0.128	0.740	13
<b>T-51105</b>	X	1.660 OD x .117 wall 1-1/4" Sch 30 pipe	1.660	1.425	0.117	0.683	14
<b>T-50425</b>		1-13/16 OD x .100 wall	1.812	1.612	0.100	0.645	17
<b>T-50019</b>		1.890 OD x .188 wall	1.890	1.514	0.188	1.204	9
<b>T-50020</b>		1.890 OD x .139 wall	1.890	1.612	0.139	0.918	12
<b>T-51106</b>		1.890 OD x .099 wall (near 1-1/2" Sch 30 pipe [1.9 OD x .109 wall])	1.890	1.692	0.099	0.668	17
<b>T-11631</b>	X	1.5" schedule 40 half pipe	1.900	—	0.145	0.480	12
<b>T-50618</b>	X	1.900 OD x .200 wall 1-1/2" Sch 80 pipe	1.900	1.500	0.200	1.282	8
<b>T-50239</b>	X	1.900 OD x .145 wall 1-1/2" Sch 40 pipe	1.900	1.610	0.145	0.959	11
<b>T-53544</b>		2" O.D. x 1.235" I.D. Round tube	2.000	1.235	0.383	2.332	4
<b>T-50786</b>		2 OD x 1/4 wall	2.000	1.500	0.250	1.650	7
<b>T-50868</b>		2 OD x .190 wall	2.000	1.621	0.190	1.294	9
<b>T-52666</b>		2" OD x .157 wall round tube	2.000	1.686	0.157	1.096	11
<b>T-50830</b>		2 OD x .150 wall	2.000	1.700	0.150	1.046	11

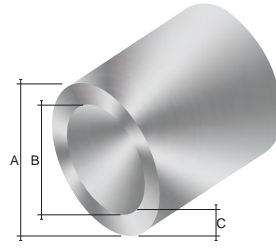


# Round tube and shedule pipe

Standards catalog



Reference	Sch PIPE	Description	A	B	C	Wt/Ft	Factor
<b>T-50459</b>		2 OD x 1/8 wall	2.000	1.750	0.125	0.884	13
<b>T-50557</b>		2 OD x .100 wall	2.000	1.800	0.100	0.713	17
<b>T-51485</b>		2.016 OD x .058 wall	2.016	1.900	0.058	0.428	29
<b>T-52709</b>		2.150 x .120 round pipe	2.150	1.910	0.120	0.920	14
<b>T-11632</b>	χ	2.0" schedule 40 half pipe	2.375	—	0.154	0.644	11
<b>T-50456</b>	χ	2-3/8 OD x .218 wall 2" Sch 80 pipe	2.375	1.939	0.218	1.772	8
<b>T-50602</b>	χ	2-3/8 OD x .154 wall 2" Sch 40 pipe	2.375	2.067	0.154	1.289	11
<b>T-50998</b>	χ	2-3/8 OD x .109 wall 2" Sch 10 pipe	2.375	2.157	0.109	0.931	15
<b>T-50460</b>		2-1/2 OD x 1/8 wall	2.500	2.250	0.125	1.120	13
<b>T-52596</b>		2-3/4 OD x 1/8 wall	2.750	2.500	0.125	1.234	13
<b>T-51876</b>	χ	2-7/8 OD x .375 wall 2-1/2" Sch 160 pipe	2.875	2.125	0.375	3.534	4
<b>T-50944</b>	χ	2-7/8 OD x .276 wall 2-1/2" Sch 80 pipe	2.875	2.323	0.276	2.705	6
<b>T-50603</b>	χ	2-7/8 OD x .203 wall 2-1/2" Sch 40 pipe	2.875	2.469	0.203	2.044	8
<b>T-52808</b>	χ	2-1/2" schedule 10 pipe	2.875	2.635	0.120	1.220	14
<b>T-51097</b>		2-7/8 OD x .108 wall (near 2-1/2" Sch 10 pipe [.120 wall])	2.875	2.660	0.108	1.122	15
<b>T-51876</b>	χ	2-7/8 OD x .375 wall 2-1/2" Sch 160 pipe	3.000	2.250	0.375	3.534	4
<b>T-52670</b>		3" OD x .250 wall	3.000	2.500	0.250	2.592	7
<b>T-50443</b>		3 OD x 1/8 wall	3.000	2.750	0.125	1.355	13
<b>T-52961</b>		3.000 OD x .125 wall	3.000	2.750	0.125	1.360	13
<b>T-50453</b>		3-3/8 OD x 1/16 wall	3.374	3.250	0.062	0.774	27
<b>T-50695</b>	χ	3-1/2 OD x .300 wall 3" Sch 80 pipe	3.500	2.900	0.300	3.619	6
<b>T-50390</b>	χ	3-1/2 OD x .216 wall 3" Sch 40 pipe	3.500	3.068	0.216	2.674	8
<b>T-50477</b>	χ	3-1/2 OD x 3/16 wall 3" Sch 30 pipe	3.500	3.124	0.188	2.347	9
<b>T-51477</b>		3-1/2 OD x 1/8 wall (near 3" Sch 10 pipe [.120 wall])	3.500	3.250	0.125	1.590	13
<b>T-51924</b>	χ	4 OD x .318 wall 3-1/2" Sch 80 pipe	4.000	3.364	0.318	4.414	5



Reference	Sch PIPE	Description	A	B	C	Wt/Ft	Factor
<b>T-51086</b>		4 OD x 1/4 wall	4.000	3.500	0.250	3.534	7
<b>T-50823</b>	X	4 OD x .226 wall 3-1/2" Sch 40 pipe	4.000	3.548	0.226	3.215	7
<b>T-52856</b>		4" x 3/16" wall round tube	4.000	3.625	0.1875	2.680	9
<b>T-50236</b>		4 OD x 1/8 wall (near 3-1/2" Sch 10 pipe [.120 wall])	4.000	3.750	0.125	1.825	13
<b>T-51790</b>	X	4-1/2 OD x .337 wall 4" Sch 80 pipe	4.500	3.826	0.337	5.288	5
<b>T-53476</b>		4.5" x .250 wall round tube	4.500	4.000	0.250	4.010	7
<b>T-50604</b>	X	4-1/2 OD x .237 wall 4" Sch 40 pipe	4.500	4.026	0.237	3.809	7
<b>T-51627</b>	X	5.563 OD x .375 wall 5" Sch 80 pipe	5.563	4.813	0.375	7.188	5
<b>T-51703</b>	X	5.563 OD x .258 wall 5" Sch 40 pipe	5.563	5.047	0.258	5.057	7
<b>T-12830</b>		6" x .230 wall tube	6.000	5.540	0.230	5.003	7
<b>T-52849</b>	X	6" sch 40 pipe	6.625	6.065	0.280	6.560	6



**Exlabesa Extrusion Tifton, Inc.**

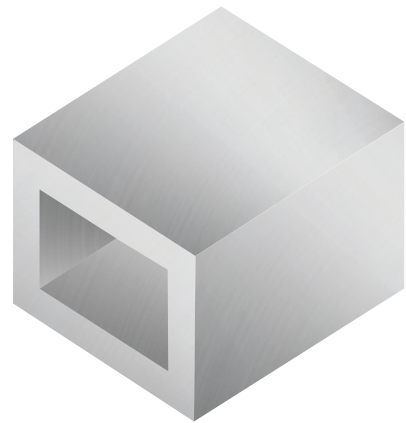
250 Southwell Blvd.  
PO Box 7550 - 31793  
Tifton, GA. 31794  
Tel. +229 382 7330  
[www.exlabesa.com](http://www.exlabesa.com)



*American Aluminum Association Standard Tolerances Apply*

# Rectangular/square tube (sharp corners)

---



**Exlabesa Extrusion Tifton, Inc.**

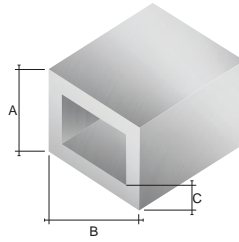
250 Southwell Blvd.  
PO Box 7550 - 31793  
Tifton, GA. 31794  
Tel. +229 382 7330  
[www.exlabesa.com](http://www.exlabesa.com)



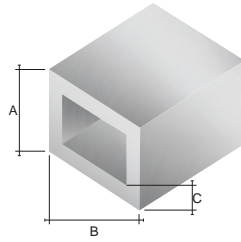
*American Aluminum Association Standard Tolerances Apply*

# Rectangular/square tube (sharp corners)

Standards catalog



Reference	Description	A	B	C	Wt/Ft	Factor
<b>T-50644</b>	1/2 sq x 1/16 wall	0.500	0.500	0.062	0.131	27
<b>T-52901</b>	0.625 x 0.625 x .045 picket sharp	0.625	0.625	0.045	0.130	37
<b>T-50774</b>	5/8 sq x 1/16 wall	0.625	0.625	0.062	0.168	27
<b>T-50025</b>	.725 sq x .050 wall	0.725	0.725	0.050	0.162	33
<b>T-53073</b>	.750 square tube x .050 sharp	0.750	0.750	0.050	0.170	33
<b>T-50455</b>	3/4 sq x 1/16 wall	0.750	0.750	0.062	0.204	27
<b>T-50608</b>	3/4 sq x 3/32 wall	0.750	0.750	0.093	0.293	18
<b>T-50609</b>	3/4 sq x 1/8 wall	0.750	0.750	0.125	0.375	13
<b>T-52632</b>	1 sq x .050 wall	1.000	1.000	0.060	0.228	33
<b>T-50257</b>	1 sq x 1/16 wall	1.000	1.000	0.062	0.280	27
<b>T-50610</b>	1 sq x .090 wall	1.000	1.000	0.090	0.393	19
<b>T-50240</b>	1 sq x 1/8 wall	1.000	1.000	0.125	0.526	13
<b>T-51384</b>	1 x 1-1/2 x 1/8 wall	1.000	1.500	0.125	0.675	13
<b>T-52633</b>	1 x 2 x .062 wall	1.000	2.000	0.062	0.428	27
<b>T-52748</b>	1 x 2 x .086 wall	1.000	2.000	0.086	0.580	19
<b>T-51081</b>	1 x 2 x .090 wall	1.000	2.000	0.090	0.610	18
<b>T-50268</b>	1 x 2 x 1/8 wall	1.000	2.000	0.125	0.824	13
<b>T-53241</b>	1 x 3 x .063" wall	1.000	3.000	0.063	0.590	26
<b>T-53269</b>	3 x 1 x .093" wall	1.000	3.000	0.093	0.850	18
<b>T-50269</b>	1 x 3 x 1/8 wall	1.000	3.000	0.125	1.124	13
<b>T-53267</b>	4 x 1 x .062" wall	1.000	4.000	0.062	0.730	27
<b>T-53268</b>	4 x 1 x .093" wall	1.000	4.000	0.093	1.070	18
<b>T-53240</b>	1 x 4 x .093 wall	1.000	4.000	0.093	1.070	18
<b>T-50883</b>	1 x 4 x 1/8 wall	1.000	4.000	0.125	1.424	13
<b>T-51976</b>	1 x 5 x 1/8 wall	1.000	5.000	0.125	1.726	13

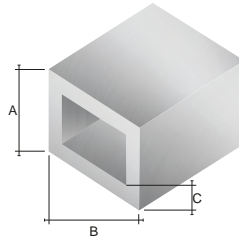


Reference	Description	A	B	C	Wt/Ft	Factor
<b>T-51977</b>	1 x 6 x 1/8 wall	1.000	6.000	0.125	2.026	13
<b>T-50643</b>	1.200 sq x .050 wall	1.200	1.200	0.050	0.276	33
<b>T-50611</b>	1-1/4 sq x 3/32 wall	1.250	1.250	0.093	0.516	18
<b>T-50945</b>	1-1/4 sq x 1/8 wall	1.250	1.250	0.125	0.676	13
<b>T-53477</b>	1-1/4 x 1-1/2 .065 Wall rectangular tube	1.250	1.500	0.065	0.408	26
<b>T-50157</b>	1-1/4 x 2-3/8 x 3/16 wall	1.250	2.375	0.188	1.466	9
<b>T-50991</b>	1-5/16 x 1-11/16 x 1/8 wall	1.313	1.688	0.125	0.825	13
<b>T-51770</b>	1-1/2 sq x 1/16 wall	1.500	1.500	0.062	0.428	27
<b>T-50612</b>	1-1/2 sq x 3/32 wall	1.500	1.500	0.093	0.628	18
<b>T-50241</b>	1-1/2 sq x 1/8 wall	1.500	1.500	0.125	0.826	13
<b>T-50924</b>	1-1/2 sq x 3/16 wall	1.500	1.500	0.188	1.184	9
<b>T-52420</b>	1-1/2 sq x 1/4 wall	1.500	1.500	0.250	1.500	7
<b>T-51798</b>	1-1/2 x 3 x .050 wall	1.500	3.000	0.050	0.528	33
<b>T-50884</b>	1-1/2 x 3 x 1/8 wall	1.500	3.000	0.125	1.276	13
<b>T-51437</b>	1-1/2 x 2 x 1/8 wall	1.500	2.000	0.125	0.975	13
<b>T-50499</b>	1-5/8 sq x .100 wall	1.625	1.625	0.100	0.732	17
<b>T-50990</b>	1-3/4 sq x 3/32 wall	1.750	1.750	0.093	0.740	18
<b>T-51034</b>	1-3/4 sq x 1/8 wall	1.750	1.750	0.125	0.975	13
<b>T-52303</b>	1-3/4 x 2-1/4 x 1/8 wall	1.750	2.250	0.125	1.124	13
<b>T-51916</b>	1-3/4 x 4 x 1/8 wall	1.750	4.000	0.125	1.650	13
<b>T-50230</b>	2 sq x 1/16 wall	2.000	2.000	0.060	0.559	28
<b>T-51207</b>	2 sq x .077 wall	2.000	2.000	0.077	0.710	22
<b>T-51230</b>	2 sq x .080 wall	2.000	2.000	0.080	0.738	21
<b>T-50613</b>	2 sq x .088 wall	2.000	2.000	0.088	0.807	19
<b>T-51980</b>	2 sq x .093 wall	2.000	2.000	0.093	0.851	18

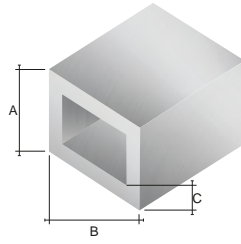


# Rectangular/square tube (sharp corners)

Standards catalog



Reference	Description	A	B	C	Wt/Ft	Factor
<b>T-50095</b>	2 sq x 1/8 wall	2.000	2.000	0.125	1.126	13
<b>T-50614</b>	2 sq x .190 wall	2.000	2.000	0.190	1.651	9
<b>T-50582</b>	2 sq x 1/4 wall	2.000	2.000	0.250	2.100	7
<b>T-53022</b>	2 x 2.5 x .121 wall	2.000	2.500	0.250	1.24	14
<b>T-53463</b>	2 x 3 x .080 wall	2.000	3.000	0.080	0.930	21
<b>T-53092</b>	2 x 3 x .093 wall	2.000	3.000	0.093	1.070	18
<b>T-50270</b>	2 x 3 x 1/8 wall	2.000	3.000	0.125	1.424	13
<b>T-53312</b>	3 x 2 x .188" wall	2.000	3.000	0.188	2.090	9
<b>T-50616</b>	2 x 3 x 1/4 wall	2.000	3.000	0.250	2.700	7
<b>T-53239</b>	2 x 4 x .093 wall	2.000	4.000	0.093	1.300	18
<b>T-50271</b>	2 x 4 x 1/8 wall	2.000	4.000	0.125	1.724	13
<b>T-50732</b>	2 x 4 x 1/4 wall	2.000	4.000	0.250	3.300	7
<b>T-51759</b>	2 x 5 x .082 wall	2.000	5.000	0.082	1.345	20
<b>T-50400</b>	2 x 5 x 1/8 wall	2.000	5.000	0.125	2.025	13
<b>T-52870</b>	2 x 5 x .250 wall	2.000	5.000	0.250	3.900	7
<b>T-51082</b>	2 x 6 x 1/8 wall	2.000	6.000	0.125	2.325	13
<b>T-51554</b>	2 x 6 x 1/4 wall	2.000	6.000	0.250	4.500	7
<b>T-50301</b>	2 x 8 x 1/8 wall	2.000	8.000	0.125	2.924	13
<b>T-51674</b>	2 x 8 x 1/4 wall	2.000	8.000	0.250	5.700	7
<b>T-51743</b>	2 x 10 x 1/8 wall	2.000	10.000	0.125	3.525	13
<b>T-50063</b>	2-1/2 Post, square	2.485	2.485	0.875	1.007	19
<b>T-50063</b>	2.485 sq x .0875 wall	2.485	2.485	0.088	1.007	19
<b>T-52897</b>	2.5 square post with .070 wall sharp	2.500	2.500	0.070	0.820	24
<b>T-50851</b>	2-1/2 sq x .075 wall	2.500	2.500	0.075	0.874	22
<b>T-53198</b>	2.5 square tube x .080 wall sharp	2.500	2.500	0.080	0.930	21



Reference	Description	A	B	C	Wt/Ft	Factor
<b>T-53091</b>	2.500 x .093 wall	2.500	2.500	0.093	1.070	18
<b>T-52583</b>	2-1/2 sq x .100 wall	2.500	2.500	0.100	1.152	17
<b>T-50258</b>	2-1/2 sq x 1/8 wall	2.500	2.500	0.125	1.426	13
<b>T-52614</b>	2-1/2 sq x 3/16 wall	2.500	2.500	0.188	2.087	9
<b>T-51061</b>	2-1/2 x 4-1/2 x 3/16 wall	2.500	4.500	0.188	2.989	9
<b>T-50927</b>	3 sq x .088 wall	3.000	3.000	0.088	1.230	19
<b>T-53212</b>	3 x 3 x .093 wall tube sharp	3.000	3.000	0.093	1.300	18
<b>T-50486</b>	3 sq x 1/8 wall	3.000	3.000	0.125	1.722	13
<b>T-50615</b>	3 sq x 1/4 wall	3.000	3.000	0.250	3.300	7
<b>T-53590</b>	3 x 3 x 3/8 Square tube	3.000	3.000	0.375	4.724	4
<b>T-52746</b>	3 x 4 x .118 wall	3.000	4.000	0.118	1.870	14
<b>T-52190</b>	3 x 4 x 1/8 wall	3.000	4.000	0.125	2.026	13
<b>T-52505</b>	3 x 4 x 1/4 wall	3.000	4.000	0.250	3.900	7
<b>T-50838</b>	3 x 5 x 3/16 wall	3.000	5.000	0.188	3.440	9
<b>T-52701</b>	3.0 x 6.0 wall	3.000	6.000	0.125	2.630	13
<b>T-51625</b>	3 x 6 x 3/16 wall	3.000	6.000	0.188	3.892	9
<b>T-53043</b>	3 x 6 x .240 wall	3.000	6.000	0.240	4.910	7
<b>T-53368</b>	4 x 4 x .093" wall square tube sharp	4.000	4.000	0.093	1.744	18
<b>T-50500</b>	4 sq x 1/8 wall	4.000	4.000	0.125	2.324	13
<b>T-52745</b>	4' square tube x .238 wall sharp	4.000	4.000	0.238	4.300	7
<b>T-50583</b>	4 sq x 1/4 wall	4.000	4.000	0.250	4.500	10
<b>T-52476</b>	4 x 6 x 1/8 wall	4.000	6.000	0.125	2.926	13
<b>T-51552</b>	4 x 6 x 1/4 wall	4.000	6.000	0.250	5.700	7
<b>T-51675</b>	4 x 8 x 1/4 wall	4.000	8.000	0.250	6.900	7
<b>T-52857</b>	5 square tube x .125 sharp	5.000	5.000	0.125	2.930	13



**Exlabesa Extrusion Tifton, Inc.**

250 Southwell Blvd.  
PO Box 7550 - 31793  
Tifton, GA. 31794  
Tel. +229 382 7330  
[www.exlabesa.com](http://www.exlabesa.com)



*American Aluminum Association Standard Tolerances Apply*

# Rectangular/square tube (radius corners)

---



**Exlabesa Extrusion Tifton, Inc.**

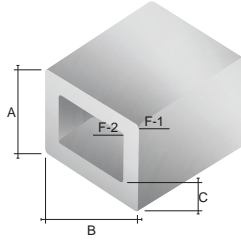
250 Southwell Blvd.  
PO Box 7550 - 31793  
Tifton, GA. 31794  
Tel. +229 382 7330  
[www.exlabesa.com](http://www.exlabesa.com)



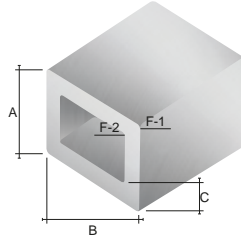
*American Aluminum Association Standard Tolerances Apply*

# Rectangular/square tube (radius corners)

Standards catalog



Reference	Description	A	B	C	F-1	F-2	Wt/Ft	Factor
<b>T-51589</b>	.410 x 2 x .044 wall outside rad .205 (full rad)	0.410	2.000	0.044	0.205	0.161	0.229	38
<b>T-50447</b>	1/2 sq x .045 wall outside rad .025	0.500	0.500	0.045	0.025	0.012	0.098	37
<b>T-50396</b>	.600 sq x .043 wall outside rad .040	0.600	0.600	0.043	0.040	0.015	0.114	38
<b>T-52900</b>	Parkway picket	0.620	1.000	0.045	0.078	0.033	–	37
<b>T-50229</b>	5/8 sq x .045 wall outside rad .045	0.625	0.625	0.045	0.045	0.015	0.124	37
<b>T-50691</b>	5/8 x .865 x .050 wall outside rad .045	0.625	0.865	0.050	0.045	0.015	0.165	33
<b>T-51099</b>	5/8 x 1 x .050 wall outside rad .030	0.625	1.000	0.050	0.030	0.015	0.182	34
<b>T-52860</b>	.750 square x .062 wall	0.750	0.626	0.062	0.090	0.090	0.200	26
<b>T-50332</b>	3/4 sq x .047 wall outside rad .032	0.750	0.750	0.047	0.032	0.015	0.158	35
<b>T-50446</b>	3/4 sq x .090 wall outside rad .100	0.750	0.750	0.090	0.100	0.040	0.276	19
<b>T-52294</b>	.750 x 1.5 x .065 wall outside rad .250	0.750	1.500	0.065	0.250	0.185	0.301	26
<b>T-50465</b>	3/4 x 1-1/2 x 1/8 wall outside rad .100	0.750	1.500	0.125	0.100	0.015	0.590	6
<b>T-52597</b>	3/4 x 2 x 1/16 wall outside rad .125	0.750	2.000	0.062	0.125	0.063	0.379	27
<b>T-50787</b>	3/4 x 2-1/2 x 1/8 wall outside rad .030	0.750	2.500	0.125	0.030	0.030	0.900	13
<b>T-52902</b>	Industrial picket round	1.000	0.876	0.060	0.125	0.063	0.260	28
<b>T-50876</b>	1 sq x .050 wall outside rad .093	1.000	1.000	0.050	0.093	0.043	0.221	33
<b>T-50491</b>	1 sq x 1/16 wall outside rad .062	1.000	1.000	0.062	0.062	0.015	0.276	27
<b>T-50311</b>	1 sq x 1/16 wall outside rad .100	1.000	1.000	0.062	0.100	0.091	0.279	26
<b>T-52622</b>	1 sq x .075 wall outside rad .140	1.000	1.000	0.075	0.140	0.015	0.385	19
<b>T-51919</b>	1 sq x .089 wall outside rad .063	1.000	1.000	0.089	0.063	0.065	0.317	22
<b>T-50303</b>	1 sq x .090 wall outside rad .100	1.000	1.000	0.090	0.100	0.015	0.383	18
<b>T-50617</b>	1 sq x .090 wall outside rad .125	1.000	1.000	0.090	0.125	0.035	0.378	19
<b>T-50414</b>	1 sq x .119 wall outside rad .187	1.000	1.000	0.119	0.187	0.068	0.472	14
<b>T-50310</b>	1 sq x 1/8 wall outside rad .100	1.000	1.000	0.125	0.100	0.015	0.515	13
<b>T-50767</b>	1 sq x 1/8 wall outside rad .125	1.000	1.000	0.125	0.125	0.015	0.509	13

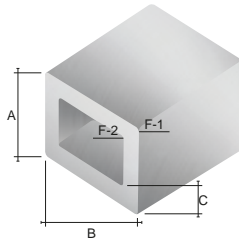


Reference	Description	A	B	C	F-1	F-2	Wt/Ft	Factor
<b>T-50731</b>	1 x 1-1/2 x .060 wall outside rad .125	1.000	1.500	0.060	0.125	0.062	0.331	28
<b>T-50634</b>	1 x 1-1/2 x 1/8 wall outside rad .125	1.000	1.500	0.125	0.125	0.015	0.659	13
<b>T-50877</b>	1 x 2 x .050 wall outside rad .093	1.000	2.000	0.050	0.093	0.043	0.341	33
<b>T-52122</b>	1 x 2 x .062 wall outside rad .125	1.000	2.000	0.062	0.125	0.063	0.416	27
<b>T-50322</b>	1 x 2 x .090 wall outside rad .100	1.000	2.000	0.090	0.100	0.040	0.601	18
<b>T-50415</b>	1 x 2 x .118 wall outside rad .188	1.000	2.000	0.118	0.188	0.070	0.751	14
<b>T-50448</b>	1 x 2 x 1/8 wall outside rad .139	1.000	2.000	0.125	0.139	0.040	0.806	13
<b>T-53510</b>	1 x 2 x .125W x .188 Rad rect tube	1.000	2.000	0.125	0.188	0.063	0.793	13
<b>T-51563</b>	1 x 2-1/2 x .090 wall outside full rad .500	1.000	2.500	0.090	0.500	0.410	0.633	19
<b>T-50776</b>	1 x 3 x .070 wall outside rad .125	1.000	3.000	0.070	0.125	0.055	0.636	24
<b>T-50088</b>	1 x 3 x 1/8 wall outside rad .250	1.000	3.000	0.125	0.250	0.125	1.076	13
<b>T-50649</b>	1 x 4 x .070 wall outside rad .125	1.000	4.000	0.070	0.125	0.055	0.804	24
<b>T-50816</b>	1-1/4 sq x 3/32 wall outside rad .125	1.250	1.250	0.094	0.125	0.031	0.506	18
<b>T-50030</b>	1-1/4 sq x 1/8 wall outside rad .125	1.250	1.250	0.125	0.125	0.125	0.674	13
<b>T-50690</b>	1-1/4 x 2-1/2 x 1/8 wall outside rad .250	1.250	2.500	0.125	0.250	0.125	1.001	13
<b>T-50413</b>	1-1/4 x 2-1/2 x 1/8 wall outside rad .375	1.250	2.500	0.125	0.375	0.250	0.970	13
<b>T-51181</b>	1.292 x 1.916 x .125 wall outside rad .302	1.292	1.916	0.125	0.302	0.177	0.827	13
<b>T-52636</b>	1.5 x .125 square tube round	1.500	1.250	0.125	0.125	0.015	0.810	13
<b>T-50369</b>	1-1/2 sq x .090 wall outside rad .100	1.500	1.500	0.090	0.100	0.040	0.600	18
<b>T-52636</b>	1-1/2 sq x .125 wall outside rad .125	1.500	1.500	0.125	0.125	0.015	0.809	13
<b>T-50936</b>	1-1/2 sq x .188 wall outside rad .125	1.500	1.500	0.188	0.125	0.015	1.169	9
<b>T-50339</b>	1-1/2 x 2 x 1/8 wall outside rad .375	1.500	2.000	0.125	0.375	0.375	0.975	12
<b>T-50808</b>	1-1/2 x 3 x 1/8 wall outside rad .125	1.500	3.000	0.125	0.125	0.062	1.264	13
<b>T-50431</b>	1-1/2 x 3 x 1/8 wall outside rad .375	1.500	3.000	0.125	0.375	0.375	1.276	12
<b>T-52804</b>	3 x 2 x .250 rect. tube	1.500	3.000	0.250	0.250	0.030	-	7

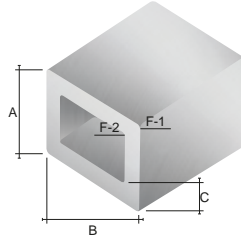


# Rectangular/square tube (radius corners)

Standards catalog



Reference	Description	A	B	C	F-1	F-2	Wt/Ft	Factor
<b>T-51546</b>	1-1/2 x 4 x 1/8 wall outside rad .188	1.500	4.000	0.125	0.188	0.032	1.538	13
<b>T-50131</b>	1-37/64 sq x .100 wall outside rad .125	1.578	1.578	0.100	0.125	0.218	0.743	15
<b>T-53016</b>	2 x .188 square tube R.406/R.250	2.000	1.624	0.188	0.406	0.406	1.530	9
<b>T-53058</b>	2 x 2 x .115 square tube round	2.000	1.770	0.115	0.016	0.016	1.040	14
<b>T-50321</b>	2 sq x 1/8 wall outside rad .100	2.000	2.000	0.125	0.100	0.040	1.116	13
<b>T-53509</b>	2 x 2 x .125W x .125 Rad sq. tube	2.000	2.000	0.125	0.125	0.010	1.109	13
<b>T-53505</b>	2 x 2 x .125W x .188 Rad sq. tube	2.000	2.000	0.125	0.188	0.063	1.093	13
<b>T-50837</b>	2 sq x 1/8 wall outside rad .250	2.000	2.000	0.125	0.250	0.125	1.077	13
<b>T-51083</b>	2 sq x 3/16 wall outside rad .125	2.000	2.000	0.188	0.125	0.015	1.619	9
<b>T-51633</b>	2 sq x 3/16 wall outside rad .188	2.000	2.000	0.188	0.188	0.188	1.635	8
<b>T-51629</b>	2 sq x 1/4 wall outside rad .250	2.000	2.000	0.250	0.250	0.125	2.051	6
<b>T-50777</b>	2 x 3 x 1/8 wall outside rad .125	2.000	3.000	0.125	0.125	0.062	1.414	13
<b>T-53508</b>	2 x 3 x .125W x .188 Rad rect tube	2.000	3.000	0.125	0.188	0.063	1.393	13
<b>T-53504</b>	2 x 3 x .125W x .250 Rad rect tube	2.000	3.000	0.125	0.250	0.125	1.377	13
<b>T-51724</b>	2 x 3 x 3/8 wall outside rad .375	2.000	3.000	0.375	0.375	0.188	3.717	4
<b>T-53480</b>	2 x 4 x .125W x .250 Rad rect tube	2.000	4.000	0.125	0.250	0.125	1.677	13
<b>T-50778</b>	2 x 4 x 3/16 wall outside rad .125	2.000	4.000	0.188	0.125	0.015	2.522	9
<b>T-53507</b>	2 x 4 x .188W x .250 Rad rect tube	2.000	4.000	0.188	0.250	0.062	2.477	9
<b>T-53503</b>	2 x 4 x .250W x .188 Rad rect tube	2.000	4.000	0.250	0.188	0.010	3.264	7
<b>T-51704</b>	2 x 4 x 1/4 wall outside rad .250	2.000	4.000	0.250	0.250	0.015	3.235	7
<b>T-53502</b>	2 x 5 x .125W x .250 Rad rect tube	2.000	5.000	0.125	0.250	0.125	1.977	13
<b>T-53506</b>	2 x 6 x .125W x .25 Rad rect tube	2.000	6.000	0.125	0.250	0.125	2.277	13
<b>T-52701</b>	2.450 x 1/4 wall outside rad .312	2.450	0.250	0.312	0.312	0.015	2.544	7
<b>T-52702</b>	2.450 x .250 square tube R.312 round	2.450	1.950	0.250	0.312	0.062	2.540	7
<b>T-50278</b>	3 sq x 5/64 wall outside rad .094	3.000	3.000	0.078	0.094	0.094	1.093	21



Reference	Description	A	B	C	F-1	F-2	Wt/Ft	Factor
T-50071	3 sq x 1/8 wall outside rad .120	3.000	3.000	0.125	0.120	0.016	1.711	13
T-50416	3 sq x 1/8 wall outside rad .250	3.000	3.000	0.125	0.250	0.125	1.677	13
T-52385	3 sq x 3/16 wall outside rad .187	3.000	3.000	0.187	0.187	0.031	2.490	9
T-53511	3 x 3 x .188W x .125 Rad sq. tube	3.000	3.000	0.188	0.125	0.010	2.477	9
T-50458	3 sq x 1/4 wall outside rad .313	3.000	3.000	0.250	0.313	0.015	3.199	7
T-50072	4 sq x 1/8 wall outside rad .125	4.000	4.000	0.125	0.125	0.031	2.310	13
T-52386	4 sq x 3/16 wall outside rad .125	4.000	4.000	0.188	0.125	0.015	3.425	9
T-51628	4 sq x 1/4 wall outside rad .375	4.000	4.000	0.250	0.375	0.375	4.500	6
T-53448	6" square tube x .188 wall round	6.000	5.624	0.188	0.125	0.125	5.230	9



**Exlabesa Extrusion Tifton, Inc.**

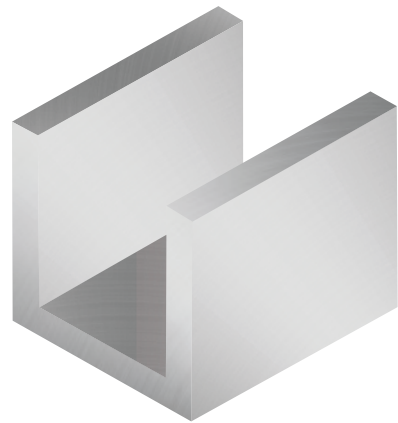
250 Southwell Blvd.  
PO Box 7550 - 31793  
Tifton, GA. 31794  
Tel. +229 382 7330  
[www.exlabesa.com](http://www.exlabesa.com)



*American Aluminum Association Standard Tolerances Apply*

# Channel

---

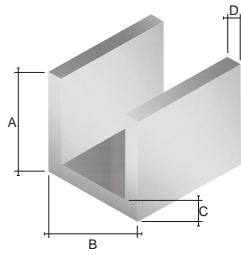


**Exlabesa Extrusion Tifton, Inc.**

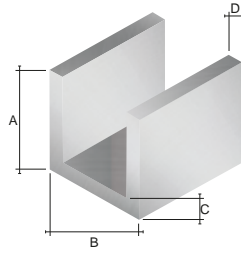
250 Southwell Blvd.  
PO Box 7550 - 31793  
Tifton, GA. 31794  
Tel. +229 382 7330  
[www.exlabesa.com](http://www.exlabesa.com)



*American Aluminum Association Standard Tolerances Apply*

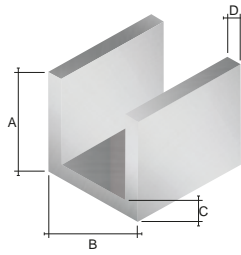


Reference	Description	A	B	C	D	Wt/Ft	Factor
<b>T-13725</b>	1.25" x 1/2" x .125" wall	1.250	0.500	0.125	–	0.125	14
<b>T-13723</b>	1.5" x 1/2" x .125" wall	1.500	0.500	0.125	–	0.125	14
<b>T-10645</b>	5/8 web x 9/16 walls = .050 web / .055 legs	0.562	0.625	0.050	0.055	0.105	32
<b>T-10652</b>	5/8 web x 1 x 1/8 wall	1.000	0.625	0.125	0.125	0.356	14
<b>T-10026</b>	.700 web x .492 x .045 wall	0.492	0.700	0.045	0.045	0.086	38
<b>T-13724</b>	1.5" x .750" x .125" wall	1.500	0.750	0.125	–	0.125	14
<b>T-11875</b>	.760 web x .617 x .055 wall Full rad at leg ends	0.617	0.760	0.055	0.055	0.124	30
<b>T-12868</b>	Channel radius corners	0.530	0.835	0.075	–	0.075	23
<b>T-10681</b>	1 web x 3/4 x 1/8 wall	0.750	1.000	0.125	0.125	0.337	14
<b>T-10773</b>	1 x 1 x .090 wall	1.000	1.000	0.090	0.090	0.304	19
<b>T-13467</b>	1 x 1 x .110 channel	1.000	1.000	0.110	0.110	0.370	16
<b>T-10405</b>	1 x 1 x 1/8 wall	1.000	1.000	0.125	0.125	0.412	14
<b>T-10772</b>	1 x 1-1/2 x .090 wall	1.500	1.000	0.090	0.090	0.413	19
<b>T-10834</b>	1 x 2 x 1/8 wall	2.000	1.000	0.125	0.125	0.712	14
<b>T-10371</b>	1.010 web x .780 x .055 wall	0.780	1.010	0.055	0.055	0.161	30
<b>T-11215</b>	1.120 web x .500 x .060 wall	0.500	1.120	0.060	0.060	0.144	29
<b>T-13290</b>	Channel 1 x 1.128 x .056	1.000	1.128	0.056	0.056	0.200	30
<b>T-13464</b>	1-1/4 x 3/4 x .093 wall channel	0.750	1.250	0.093	0.093	0.290	18
<b>T-11052</b>	1.250 web x 1.250 x .094 wall R.220 corners	1.250	1.250	0.094	0.094	0.384	18
<b>T-13466</b>	1-1/4 x 1-1/4 x .110 channel	1.250	1.250	0.110	0.110	0.470	16
<b>T-11929</b>	1-1/4 web x 1-1/4 x 1/8 wall	1.250	1.250	0.125	0.125	0.525	14
<b>T-11272</b>	1.282 web x 1.313 x 1/8 wall Full rad at leg ends	1.313	1.282	0.125	0.125	0.545	14
<b>T-10993</b>	1-5/16 web x 1-5/8 x 1/8 wall	1.625	1.313	0.125	0.125	0.646	14
<b>T-10882</b>	1.360 web x .617 x .055 wall Full rad ends / R.062 corners	0.617	1.360	0.055	0.055	0.163	30
<b>T-12192</b>	1-1/2 web x 1 x 1/8 wall	1.000	1.500	0.125	0.125	0.487	14



Reference	Description	A	B	C	D	Wt/Ft	Factor
<b>T-10434</b>	1-1/2 web x 1-1/2 x 3/16 wall	1.500	1.500	0.188	0.188	0.930	9
<b>T-10170</b>	1.535 web x 1.5 walls = .060 web / .090 legs	1.500	1.535	0.060	0.090	0.422	21
<b>T-11345</b>	1.600 web x 1.500 x .045 wall with R.100 at outside corners	1.500	1.600	0.045	0.045	0.240	37
<b>T-12516</b>	1.610 web x .755 x .055 wall	0.755	1.610	0.055	0.055	0.198	30
<b>T-10370</b>	1.860 web x .850 x 1/16 wall	0.850	1.860	0.062	0.062	0.254	27
<b>T-10277</b>	1-7/8 web x 2 x .125 wall	2.000	1.875	0.125	0.125	0.843	14
<b>T-10741</b>	2 web x 1 x 1/16 wall	1.000	2.000	0.063	0.063	0.293	27
<b>T-11903</b>	2 web x 1 x 3/32 wall	1.000	2.000	0.093	0.093	0.425	18
<b>T-10089</b>	2 web x 1 x 1/8 wall (45° inside angle at leg ends)	1.000	2.000	0.125	0.125	0.547	14
<b>T-10100</b>	2 web x 1 x 1/8 wall	1.000	2.000	0.125	0.125	0.563	14
<b>T-13363</b>	2 x 1 x .130 wall channel	1.000	2.000	0.130	0.130	0.590	13
<b>T-11023</b>	2 x 1-1/2 x 1/8 wall	1.500	2.000	0.125	0.125	0.720	13
<b>T-10607</b>	2 x 2 x 1/8 wall	2.000	2.000	0.125	0.125	0.863	14
<b>T-10640</b>	2 x 2 x 3/16 wall	2.000	2.000	0.188	0.188	1.268	9
<b>T-10436</b>	2 x 2 x 1/4 wall	2.000	2.000	0.250	0.250	1.650	7
<b>T-13662</b>	6 x 6 Column internal bracket	5.625	2.000	0.125	0.125	1.400	13
<b>T-11639</b>	2.090 web x 1.045 x .045 wall	1.045	2.090	0.045	0.045	0.220	37
<b>T-11315</b>	2-1/8 web x 1 x .044 wall (R.250 outside at leg ends)	1.000	2.125	0.044	0.044	0.211	38
<b>T-10928</b>	2-1/8 web x 1-1/2 x .044 wall (R.250 outside at leg ends)	1.500	2.125	0.044	0.044	0.236	43
<b>T-11024</b>	2.450 x 2.125 x .188 wall	2.125	2.450	0.188	0.188	1.426	9
<b>T-11491</b>	2-1/2 web x 1 x 1/16 wall	1.000	2.500	0.062	0.062	0.325	27
<b>T-11936</b>	2-1/2 web x 2 x 1/8 wall	2.000	2.500	0.125	0.125	0.937	14
<b>T-10682</b>	2.8 web x 1 (full rad at leg ends) walls = .125 web / .094 legs	1.000	2.800	0.125	0.094	0.622	15
<b>T-11484</b>	3 web x 1/2 x 1/8 wall	0.500	3.000	0.125	0.125	0.562	14
<b>T-12305</b>	3 web x 1 x 1/16 wall	1.000	3.000	0.062	0.062	0.362	27





Reference	Description	A	B	C	D	Wt/Ft	Factor
<b>T-12789</b>	U channel 3 x .125, 3 x 1 x .125	1.000	3.000	0.125	0.125	0.710	14
<b>T-10457</b>	3 web x 1-1/4 x 3/16 wall	1.250	3.000	0.188	0.188	1.156	9
<b>T-10417</b>	3 web x 1-1/2 x .2 wall	1.500	3.000	0.200	0.200	1.370	8
<b>T-12880</b>	Channel 3 x 3 x .125	3.000	3.000	0.125	0.125	1.310	13
<b>T-12493</b>	3-1/8 web x .680 x .055 (R.063 outside at leg ends)	0.680	3.125	0.055	0.055	0.287	31
<b>T-10929</b>	3-1/8 web x 1-1/2 x .055 (R.063 outside at leg ends)	1.500	3.125	0.055	0.055	0.395	34
<b>T-10373</b>	3-3/8 web x 2 x 3/16 (R.250 inside web)	2.000	3.376	0.188	0.188	1.594	9
<b>T-11217</b>	3.740 web x 1-1/4 x 1/8 wall	1.250	3.740	0.125	0.125	0.897	13
<b>T-12917</b>	Channel 4.750 x 3.37 x .250	3.375	4.750	0.250	–	0.250	7
<b>T-10635</b>	5 web x 2 x 3/16 wall	2.000	5.000	0.188	0.188	1.945	9
<b>T-10058</b>	5 web x 2 x 1/4 wall	2.000	5.000	0.250	0.250	2.557	7
<b>T-12828</b>	Channel 5 x 2.25 x .150/.260	2.250	5.000	0.260	0.150	2.320	8
<b>T-12829</b>	Channel 5 x 2.25 x .260/.150	2.250	5.000	0.150	0.260	2.650	8
<b>T-12881</b>	Channel 2.75 x 5 x .320 x .190 IR .300	2.750	5.000	0.190	0.320	3.150	6
<b>T-10980</b>	6 web x 1.734 x 1/8 wall (R.062 inside / R.125 outside)	1.734	6.000	0.125	0.125	1.296	13
<b>T-12826</b>	Channel 6 x 2.5 x .290/.170	2.500	6.000	0.170	0.290	2.890	7
<b>T-12827</b>	Channel 6 x 3.25 x .350/.210	3.250	6.000	0.210	0.350	4.110	6
<b>T-12825</b>	Channel 7 x 2.25 x .290/.170	2.250	7.000	0.170	0.290	2.920	8
<b>T-12824</b>	Channel 7 x 2.75 x .290/.170	2.750	7.000	0.170	0.290	3.270	7
<b>T-12823</b>	Channel 7 x 3.5 x .380/.210	3.500	7.000	0.210	0.380	4.780	6
<b>T-10302</b>	8 web x 2 x .125 wall	2.000	8.000	0.125	0.125	1.763	13
<b>T-12822</b>	Channel 8 x 3 x .350/.190	3.000	8.000	0.190	0.350	4.230	7

**Exlabesa Extrusion Tifton, Inc.**

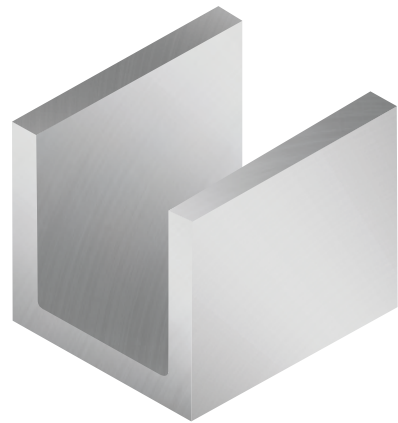
250 Southwell Blvd.  
PO Box 7550 - 31793  
Tifton, GA. 31794  
Tel. +229 382 7330  
[www.exlabesa.com](http://www.exlabesa.com)



*American Aluminum Association Standard Tolerances Apply*

# AA channel

---

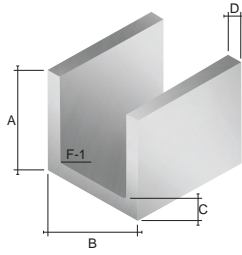


**Exlabesa Extrusion Tifton, Inc.**

250 Southwell Blvd.  
PO Box 7550 - 31793  
Tifton, GA. 31794  
Tel. +229 382 7330  
[www.exlabesa.com](http://www.exlabesa.com)



*American Aluminum Association Standard Tolerances Apply*



Reference	Description	A	B	C	D	F-1	Wt/Ft	Factor
<b>T-11626</b>	2 x 1.25 x .170 AA	1.250	2.000	0.170	0.260	0.150	1.093	8
<b>T-10938</b>	3 x 1.5 x .130 AA	1.500	3.000	0.130	0.200	0.250	1.157	10
<b>T-11108</b>	3 x 1.75 x .170 AA	1.750	3.000	0.170	0.260	0.250	1.630	8
<b>T-10418</b>	4 x 2 x .150 AA	2.000	4.000	0.150	0.230	0.250	1.767	9
<b>T-11087</b>	4 x 2.25 x .190 AA	2.250	4.000	0.190	0.290	0.250	2.378	7
<b>T-10747</b>	5 x 2.25 x .150 AA	2.250	5.000	0.150	0.260	0.300	2.256	8
<b>T-10487</b>	6 x 2.5 x .170 AA	2.500	6.000	0.170	0.290	0.300	2.892	7

**Exlabesa Extrusion Tifton, Inc.**

250 Southwell Blvd.  
PO Box 7550 - 31793  
Tifton, GA. 31794  
Tel. +229 382 7330  
[www.exlabesa.com](http://www.exlabesa.com)



*American Aluminum Association Standard Tolerances Apply*

# American standard channel

---



**Exlabesa Extrusion Tifton, Inc.**

250 Southwell Blvd.  
PO Box 7550 - 31793  
Tifton, GA. 31794  
Tel. +229 382 7330  
[www.exlabesa.com](http://www.exlabesa.com)

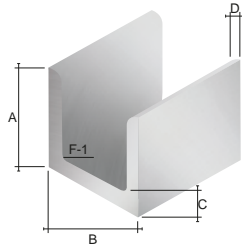


*American Aluminum Association Standard Tolerances Apply*



# American standard channel

Standards catalog



Reference	Description	A	B	C	D	F-1	Wt/Ft	Factor
T-10247	3 x .170 American standard	1.410	3.000	0.170	0.170	0.270	1.482	7
T-10507	3 x .258 American standard	1.498	3.000	0.258	0.170	0.270	1.778	6
T-11559	4 x .488 American standard	1.750	3.000	0.488	0.438	0.250	3.545	3
T-10248	4 x .180 American standard	1.580	4.000	0.180	0.180	0.280	1.833	7
T-10758	4 x .247 American standard	1.647	4.000	0.247	0.180	0.280	2.134	6
T-10745	4 x .320 American standard	1.720	4.000	0.320	0.180	0.280	2.484	5
T-10759	5 x .190 American standard	1.750	5.000	0.190	0.190	0.290	2.191	7
T-12052	5 x .325 American standard	1.885	5.000	0.325	0.190	0.290	3.001	5
T-10249	6 x .225 American standard	1.945	6.000	0.225	0.200	0.300	3.085	6
T-10406	6 x .314 American standard	2.035	6.000	0.314	0.200	0.300	3.696	5
T-10597	8 x .250 American standard	2.290	8.000	0.250	0.220	0.320	4.414	5

**Exlabesa Extrusion Tifton, Inc.**

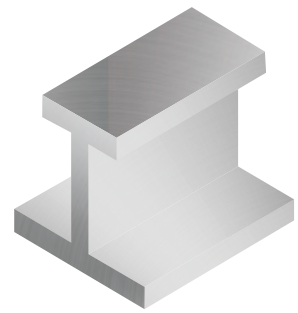
250 Southwell Blvd.  
PO Box 7550 - 31793  
Tifton, GA. 31794  
Tel. +229 382 7330  
[www.exlabesa.com](http://www.exlabesa.com)



*American Aluminum Association Standard Tolerances Apply*

# I-beam

---

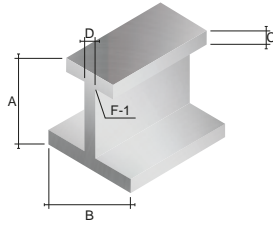


**Exlabesa Extrusion Tifton, Inc.**

250 Southwell Blvd.  
PO Box 7550 - 31793  
Tifton, GA. 31794  
Tel. +229 382 7330  
[www.exlabesa.com](http://www.exlabesa.com)



*American Aluminum Association Standard Tolerances Apply*



Reference	Description	A	B	C	D	F-1	Wt/Ft	Factor
<b>T-12801</b>	1.72 x 1.72 x .125 I-Beam	1.720	1.720	0.188	0.125	0.015	0.980	10
<b>T-11630</b>	2 x .875 x .188 wall leg ends 45° angle to inside	2.000	0.875	0.188	0.188	0.015	0.761	9
<b>T-10195</b>	2-7/8 x 3-1/2 x .135 wall leg ends 45° angle to inside	2.875	3.500	0.135	0.135	0.125	1.528	12
<b>T-10784</b>	4 x 2-5/8 x 1/4 wall	4.000	2.625	0.250	0.250	0.250	2.689	7
<b>T-10605</b>	4 x 3 x .170-.290 wall AA I-Beam	4.000	3.000	0.290	0.170	0.250	2.850	7
<b>T-11851</b>	4 x 3.5 x .188 wall AA I-Beam	5.000	3.500	0.320	0.190	0.300	3.775	6
<b>T-10846</b>	5 x 3.5 x .190-.320 wall Army-Navy I-Beam	5.000	3.500	0.320	0.190	0.300	3.775	6
<b>T-11805</b>	5.500 x 3.460 x .195-.280 wall with full rad leg ends	5.500	3.460	0.280	0.195	0.281	3.521	7
<b>T-10357</b>	6 x 4 x .190-.290 wall AA I-Beam	6.000	4.000	0.290	0.190	0.300	4.112	7
<b>T-13584</b>	4.5 x 7 I-Beam	7.000	4.000	0.350	0.230	0.281	5.623	6
<b>T-11804</b>	7.500 x 4.375 x .230-.350 wall with full rad leg ends	7.500	4.375	0.350	0.230	0.308	5.586	6
<b>T-13639</b>	5 x 8 I-Beam	8.000	5.000	0.375	0.260	0.312	6.79	5
<b>T-13585</b>	5 x 8 I-Beam	8.000	5.000	0.410	0.260	0.312	7.26	5

**Exlabesa Extrusion Tifton, Inc.**

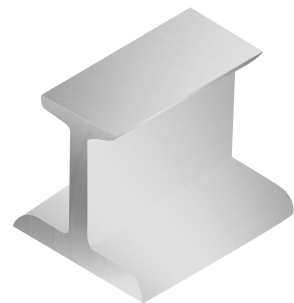
250 Southwell Blvd.  
PO Box 7550 - 31793  
Tifton, GA. 31794  
Tel. +229 382 7330  
[www.exlabesa.com](http://www.exlabesa.com)



*American Aluminum Association Standard Tolerances Apply*

# American standard I-beam

---



**Exlabesa Extrusion Tifton, Inc.**

250 Southwell Blvd.  
PO Box 7550 - 31793  
Tifton, GA. 31794  
Tel. +229 382 7330  
[www.exlabesa.com](http://www.exlabesa.com)

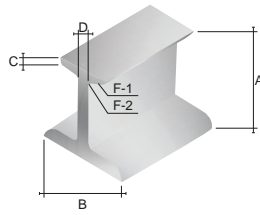


*American Aluminum Association Standard Tolerances Apply*



# American standard I-beam

Standards catalog



Reference	Description	A	B	C	D	F-1	F-2	Wt/Ft	Factor
<b>T-11624</b>	3 x 2.330 x .170	3.000	2.330	0.170	0.170	0.100	0.270	1.963	7
<b>T-10746</b>	3 x 2.509 x .349	3.000	2.509	0.170	0.349	0.100	0.270	2.755	5
<b>T-11576</b>	4 x 2.660 x .190	4.000	2.660	0.190	0.190	0.110	0.290	2.644	6
<b>T-11664</b>	5 x 2.713 x .200	5.000	2.813	0.200	0.200	0.070	0.281	3.202	6

**Exlabesa Extrusion Tifton, Inc.**

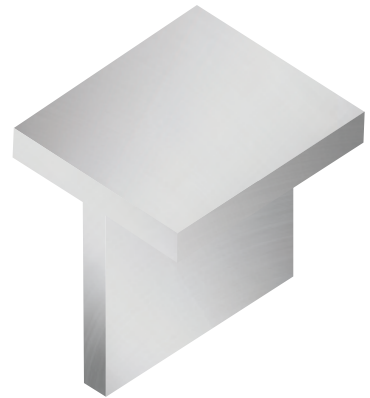
250 Southwell Blvd.  
PO Box 7550 - 31793  
Tifton, GA. 31794  
Tel. +229 382 7330  
[www.exlabesa.com](http://www.exlabesa.com)



*American Aluminum Association Standard Tolerances Apply*

# Tee

---

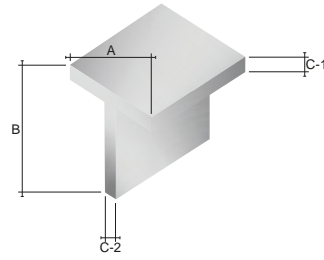


**Exlabesa Extrusion Tifton, Inc.**

250 Southwell Blvd.  
PO Box 7550 - 31793  
Tifton, GA. 31794  
Tel. +229 382 7330  
[www.exlabesa.com](http://www.exlabesa.com)



*American Aluminum Association Standard Tolerances Apply*



Reference	Description	A	B	C-1	C-2	Wt/Ft	Factor
<b>T-10886</b>	1 x 2 x 3/16 wall	1.000	2.000	0.188	0.188	0.634	9
<b>T-11074</b>	1-1/4 x 7/8 x 1/8 wall	1.250	0.875	0.125	0.125	0.300	14
<b>T-11138</b>	1-1/2 x 3 x 3/16 wall	1.500	3.000	0.188	0.188	0.973	9
<b>T-10312</b>	1-3/4 x 7/8 x 1/16 wall	1.750	0.875	0.063	0.062	0.192	27
<b>T-10520</b>	2 x 2 x 1/8 wall	2.000	2.000	0.125	0.125	0.581	14
<b>T-10694</b>	2 x 3 x 1/4 wall	2.000	3.000	0.250	0.250	1.421	7
<b>T-10250</b>	2 x 4 x 1/4 wall	2.000	4.000	0.250	0.250	1.725	7
<b>T-10251</b>	2 x 5 x 1/4 wall	2.000	5.000	0.250	0.250	2.025	7
<b>T-10451</b>	2 x 5 x 3/8 wall	2.000	5.000	0.375	0.375	2.981	5
<b>T-10508</b>	2 x 6 x 1/4 wall	2.000	6.000	0.250	0.250	2.325	7
<b>T-10656</b>	2 x 6 x 3/8 wall	2.000	6.000	0.375	0.375	3.431	5
<b>T-11420</b>	2-1/4 x 4 x 1/4 wall	2.250	4.000	0.250	0.250	1.800	7
<b>T-10875</b>	2-1/2 x 1-1/2 walls .125 top / .100 leg	2.500	1.500	0.125	0.100	0.540	15
<b>T-11641</b>	3 x 3 x 1/4 wall	3.000	3.000	0.250	0.250	1.724	7
<b>T-11418</b>	2-1/2 x 2 with full rad ends at top walls .125 top / .125 leg	3.500	2.000	0.125	0.188	0.950	12
<b>T-13487</b>	4 x 2 walls .125 top / .188 leg	4.000	2.000	0.125	0.188	1.025	12
<b>T-10802</b>	4 x 2.040 walls .188 top / .250 leg	4.000	2.040	0.188	0.250	1.489	8

**Exlabesa Extrusion Tifton, Inc.**

250 Southwell Blvd.  
PO Box 7550 - 31793  
Tifton, GA. 31794  
Tel. +229 382 7330  
[www.exlabesa.com](http://www.exlabesa.com)



*American Aluminum Association Standard Tolerances Apply*

# American standard tee

---



**Exlabesa Extrusion Tifton, Inc.**

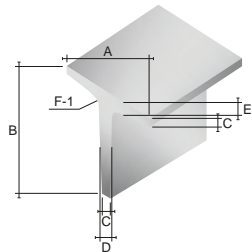
250 Southwell Blvd.  
PO Box 7550 - 31793  
Tifton, GA. 31794  
Tel. +229 382 7330  
[www.exlabesa.com](http://www.exlabesa.com)



*American Aluminum Association Standard Tolerances Apply*



# American standard tee



Reference	Description	A	B	C	D	E	F-1	Wt/Ft	Factor
T-10565	2 x 2 American standard	2.000	2.000	0.250	0.312	0.312	0.240	1.306	6
T-11490	3 x 3 American standard	3.000	3.000	0.375	0.438	0.438	0.312	2.717	4

**Exlabesa Extrusion Tifton, Inc.**

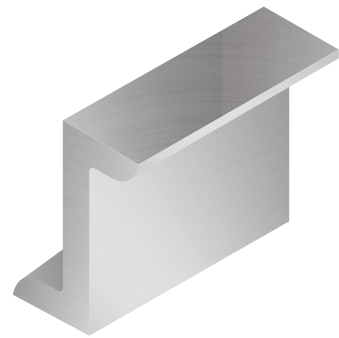
250 Southwell Blvd.  
PO Box 7550 - 31793  
Tifton, GA. 31794  
Tel. +229 382 7330  
[www.exlabesa.com](http://www.exlabesa.com)



*American Aluminum Association Standard Tolerances Apply*

# Zee bar

---

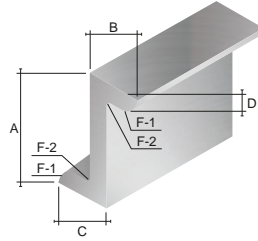


**Exlabesa Extrusion Tifton, Inc.**

250 Southwell Blvd.  
PO Box 7550 - 31793  
Tifton, GA. 31794  
Tel. +229 382 7330  
[www.exlabesa.com](http://www.exlabesa.com)



*American Aluminum Association Standard Tolerances Apply*



Reference	Description	A	B	C	D	F-1	F-2	Wt/Ft	Factor
<b>T-10934</b>	.560 x .840 x .840 x .090 wall x .060 one leg	0.560	0.840	0.840	0.090	0.015	0.015	0.195	22
<b>T-11414</b>	3/4 x 3/4 x 3/4 x 1/8 wall	0.750	0.750	0.750	0.125	0.015	0.015	0.300	14
<b>T-10403</b>	1 x 1-1/8 x 1-1/8 x 1/8 wall	1.000	1.125	1.125	0.125	0.015	0.015	0.450	14
<b>T-10172</b>	1-1/16 x 1-1/4 x 1-1/4 x 1/16 wall	1.062	1.250	1.250	0.060	0.015	0.015	0.247	28
<b>T-10950</b>	1-1/2 x 2 x 2-3/16 x 3/16 wall	1.500	2.000	2.188	0.188	0.015	0.062	1.168	9
<b>T-12405</b>	1.595 x 1.250 x .820 x .070	1.595	1.250	0.820	-	-	-	0.074	24
<b>T-11064</b>	1.688 x .750 x 3 x .125 wall	1.688	0.750	3.000	0.125	0.015	0.015	0.777	14
<b>T-10037</b>	2 x 1.226 x 1.226 walls .063 web / .075 legs	2.000	1.226	1.226	0.063	0.075	0.125	0.354	24
<b>T-11586</b>	2-1/8 x 1-1/2 x 1-1/2 x .125 wall	2.125	1.500	1.500	0.125	0.015	0.015	0.715	14
<b>T-10171</b>	2-1/4 x 3/4 x 3/4 x .050 wall	2.250	0.750	0.750	0.050	0.015	0.015	0.218	34
<b>T-11443</b>	2-3/8 x 1-1/4 x 1-1/4 x 3/16 wall	2.375	1.250	1.250	0.187	0.015	0.015	1.010	9
<b>T-10619</b>	3 x 2-11/16 x 2-11/16 x 1/4 wall	3.000	2.688	2.688	0.250	0.250	0.312	2.381	7
<b>T-10120</b>	3 x 2-11/16 x 2-11/16 x 1/4 wall	3.000	2.688	2.688	0.250	0.500	0.015	2.292	7

**Exlabesa Extrusion Tifton, Inc.**

250 Southwell Blvd.  
PO Box 7550 - 31793  
Tifton, GA. 31794  
Tel. +229 382 7330  
[www.exlabesa.com](http://www.exlabesa.com)



*American Aluminum Association Standard Tolerances Apply*

# Handrail

---

**Exlabesa Extrusion Tifton, Inc.**

250 Southwell Blvd.  
PO Box 7550 - 31793  
Tifton, GA. 31794  
Tel. +229 382 7330  
[www.exlabesa.com](http://www.exlabesa.com)

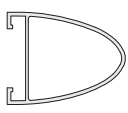


*American Aluminum Association Standard Tolerances Apply*



**Bullet rail**

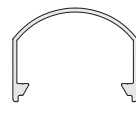
T-53462



Wt/Ft	1.820
-------	-------

**Top cap**


T-11296



Wt/Ft	0.380
-------	-------

**Top snap plate**

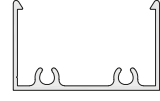
T-11462



Wt/Ft	0.180
-------	-------

**Snap channel**

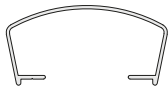
T-11463



Wt/Ft	0.270
-------	-------

**Top cap**

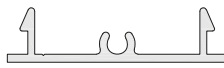
T-11464



Wt/Ft	0.320
-------	-------

**Snap plate**

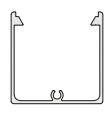
T-11465



Wt/Ft	0.230
-------	-------

**2 x 2 frame**

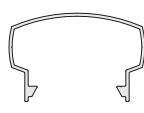
T-11466



Wt/Ft	0.580
-------	-------

**Top cap**

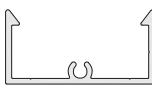
T-11721



Wt/Ft	0.440
-------	-------

**Bottom channel**

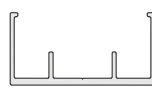
T-11722



Wt/Ft	0.340
-------	-------

**2 x 1 rail channel with legs**

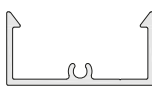
T-11904



Wt/Ft	0.400
-------	-------

**Handrail snap with scr boss**

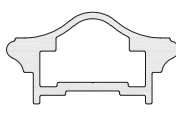
T-11922



Wt/Ft	0.350
-------	-------

**Handrail**


T-50925



Wt/Ft	1.090
-------	-------

**Circle cap**

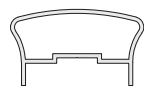
T-51115



Wt/Ft	0.970
-------	-------

**2-5/8 mushroom cap**

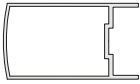
T-51116



Wt/Ft	0.710
-------	-------

T-51581

2.25 x 4 top cap

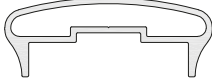


Wt/Ft | 1.460

Detailed description: A technical drawing showing the cross-section of a rectangular top cap. It has a flat top surface and a vertical side wall with a small notch or groove on the inner side.

T-51905

2.625 x 1 R4.34 rail cap




Wt/Ft | 0.670

Detailed description: A technical drawing showing the cross-section of a rail cap. It features a curved top surface with a radius of 4.34 units and a base with two small feet or supports.

T-50122

S-1 dowel




Wt/Ft | 2.099

Detailed description: A technical drawing showing the top-down view of a circular dowel. It has a central hole and a slightly raised outer rim.

T-51116

Mushroom cap



Wt/Ft | 0.709

Detailed description: A technical drawing showing the cross-section of a mushroom cap. It has a wide, flat top surface and a base with two small feet or supports.



**Exlabesa Extrusion Tifton, Inc.**

250 Southwell Blvd.  
PO Box 7550 - 31793  
Tifton, GA. 31794  
Tel. +229 382 7330  
[www.exlabesa.com](http://www.exlabesa.com)



*American Aluminum Association Standard Tolerances Apply*

# Miscellaneous

---

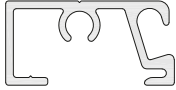
**Exlabesa Extrusion Tifton, Inc.**

250 Southwell Blvd.  
PO Box 7550 - 31793  
Tifton, GA. 31794  
Tel. +229 382 7330  
[www.exlabesa.com](http://www.exlabesa.com)




*American Aluminum Association Standard Tolerances Apply*

**T-12585** .5 x 1 patio open back




Wt/Ft	0.170
-------	-------

**T-12605** 3" drip edge fascia



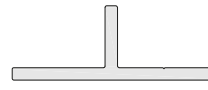
Wt/Ft	0.560
-------	-------

**T-12727** Gate track (V-track)




Wt/Ft	0.520
-------	-------

**T-12791** Tee 2"




Wt/Ft	0.390
-------	-------

**T-12869** Louver blade



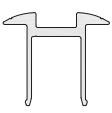
Wt/Ft	0.400
-------	-------

**T-12910** Ladder rung



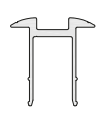
Wt/Ft	0.620
-------	-------

**T-12927** Middle clamp rapid SK



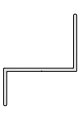
Wt/Ft	0.370
-------	-------

**T-12947** Middle clamp rapid SK 40-50 mm



Wt/Ft	0.410
-------	-------

**T-13275** Z-trim




Wt/Ft	0.300
-------	-------

**T-13277** Part E & F



Wt/Ft	0.180
-------	-------

**T-13278** Part C




Wt/Ft	0.290
-------	-------

**T-13279** Hinge



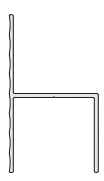
Wt/Ft	0.240
-------	-------

**T-13283** Trim



Wt/Ft	0.180
-------	-------

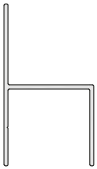
**T-13286** "h" trim



Wt/Ft	0.230
-------	-------

T-13287

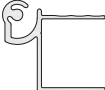
2" smooth H-section



Wt/Ft	0.240
-------	-------

T-13288

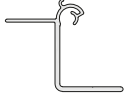
Hinge



Wt/Ft	0.360
-------	-------

T-13289


Hinge



Wt/Ft	0.460
-------	-------

T-53372

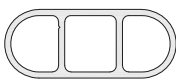
Tongue & groove slat



Wt/Ft	1.230
-------	-------

T-53374


1 x 2.5 x .090 wall spacer bar



Wt/Ft	0.830
-------	-------

T-53435

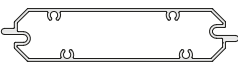
2/void tongue & groove slat



Wt/Ft	1.260
-------	-------

T-53469

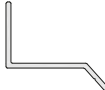
4" tongue & groove slat



Wt/Ft	0.830
-------	-------

T-13274


Drip rail



Wt/Ft	0.130
-------	-------

T-13280

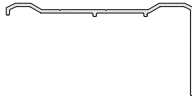
Top rail for lights



Wt/Ft	0.250
-------	-------

T-13282

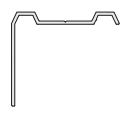
Top rail



Wt/Ft	0.310
-------	-------

T-13284


Light duty top rail



Wt/Ft	0.160
-------	-------

T-13285

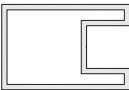
Rail



Wt/Ft	0.140
-------	-------

T-51590

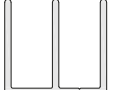
Insert frame 2" x 3"



Wt/Ft	1.727
-------	-------

T-12790

Bouble U channel

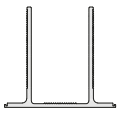


Wt/Ft	0.270
-------	-------



**T-12977**

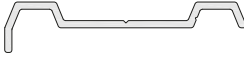
**Base channel**



Wt/Ft | 4.499

**T-13281**


**Rub rail trim**



Wt/Ft | 0.104

**T-13318**


**Rub rail trim**



Wt/Ft | 0.152

**T-13661**


**Flooring**



Wt/Ft | 1.254

**T-51562**


**Bahama blade**



Wt/Ft | 0.313

**T-51563**


**1.000 x 2.500 x .090 R.500**



Wt/Ft | 0.633

**T-53660**

**7 x 2 double hollow**



Wt/Ft | 4.477





 **Exlabesa USA**  
**Exlabesa Extrusion Tifton, Inc.**  
250 Southwell Boulevard - Tifton  
Georgia (USA)  
Tel. +229 382 7330

 **Exlabesa GERMANY**  
**Weseralu GmbH & Co. KG**  
Am Osthafen, 5  
Minden (GERMANY)  
Tel. +49 571 387 050

 **Exlabesa PORTUGAL**  
**Exlabesa Extrusion Coimbra, Lda.**  
Zona industrial de Soure, Lote 25 - Camparca  
Coimbra (PORTUGAL)  
Tel. +351 239 093 078


 **Exlabesa POLAND**  
**Exlabesa Extrusion Opole sp. z o. o.**  
ul. Porcelitowa 4, Tutowice  
Opolskie (POLAND)  
Tel. +48 774 600 250

 **Exlabesa UK**  
**Exlabesa Extrusions Doncaster Ltd.**  
Ogden Road - Wheatley Hills  
Doncaster (UNITED KINGDOM)  
Tel. +44 1302 762 500

 **Exlabesa FRANCE**  
**Flandria Aluminium Extrusions, S. A. S.**  
40 Rte de Deulemont  
Warneton (FRANCE)  
Tel. +33 320 146 160

 **Exlabesa SPAIN**  
**Exlabesa Extrusion Padron, S. L.**  
Pol. Ind. F. Quintá, Padrón  
A Coruña (SPAIN)  
Tel. +34 981 803 011

 **Exlabesa MOROCCO**  
**KAYE Aluminium Tanger, S. A. R. L.**  
R. N. Tanger - Rabat  
Asilah (MOROCCO)  
Tel. +212 539 417 398

 **Exlabesa UK**  
**Exlabesa Building Systems Ltd.**  
Ogden Road - Wheatley Hills  
Doncaster (UNITED KINGDOM)  
Tel. +44 1302 762 500

 **Exlabesa FRANCE**  
**Flandria Aluminium Systems, S. A. S.**  
40 Rte de Deulemont  
Warneton (FRANCE)  
Tel. +33 320 145 903

 **Exlabesa SPAIN**  
**Exlabesa Building Systems, S. A. U.**  
Campaña s/n, Valga  
Pontevedra (SPAIN)  
Tel. +34 986 556 277



**Exlabesa Extrusion Tifton, Inc.**

250 Southwell Blvd.  
PO Box 7550 - 31793  
Tifton, GA. 31794  
Tel. +229 382 7330  
[www.exlabesa.com](http://www.exlabesa.com)

*American Aluminum Association Standard Tolerances Apply*