

**EXLABESA**  
INDUSTRY

Massive. Beautiful.  
Efficient.

RE-local  
Recycled  
aluminium



ENG - 08/2024





**EXLABESA**  
INDUSTRY

## Circular industry

The industrial components manufactured by EXLABESA are driving the transition to a circular industrial model in three key ways:

- Incorporating up to 100% RE-local recycled aluminium with a verified low carbon footprint
- Completing recycling cycle from collection to extrusion of new profiles
- Ensuring environmental impact with an ISO 14001 certified management system

Massive. Beautiful.  
Efficient.

# EXLABESA RE-local

## Recycled Low Carbon Aluminium

The production process of recycled aluminium allows a reduction in energy consumption of up to 95% compared to the production of primary aluminium. RE-local is EXLABESA's brand of recycled aluminium with a verified carbon footprint of only 2.95 kg of CO<sub>2</sub> per kg of aluminium.



CO<sub>2</sub> footprint  
verified by  
Bureau Veritas



82% CARBON  
FOOTPRINT REDUCTION\*

\*Compared to world primary aluminium

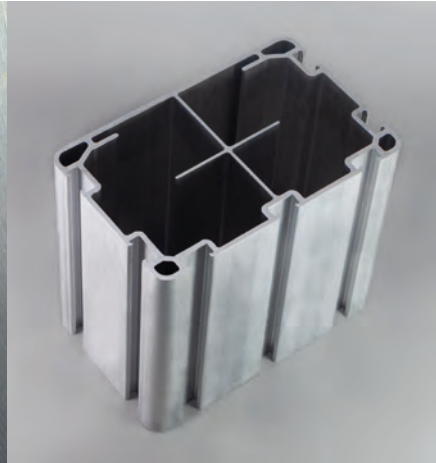


# Recycling

Recycling gives aluminium  
an infinite life and reduces  
CO<sub>2</sub> emissions



Aluminium has the extraordinary ability to be 100% recyclable indefinitely without losing its quality or properties. EXLABESA's recycling process ranges from collection and melting to the extrusion of new profiles. In this way, we promote a cleaner, more efficient and sustainable industry, contributing to the objectives of the European Green Deal.



Our state-of-the-art recycling and remelting centres produce over 80 000 tonnes of recycled billet per year. These unique capabilities enable us to take on any project with the highest levels of reliability, dependability and guaranteed supply.

Billet diameter

7", 8", 9", 10", 16"

Alloys

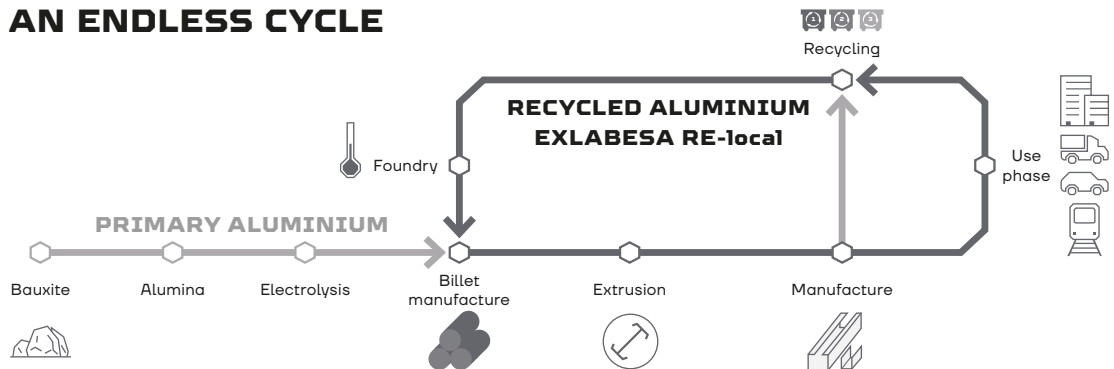
6060, 6063, 6106, 6005, 6061, 6082

# RE-local Recycled aluminium



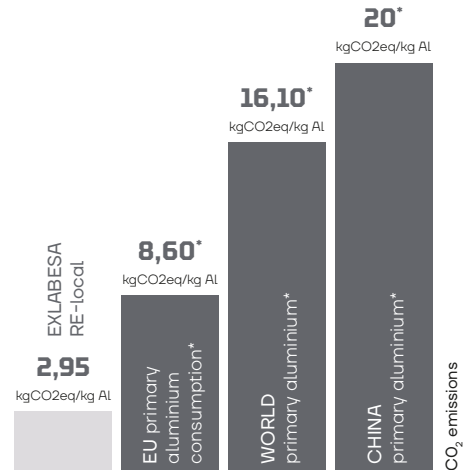
Aluminium is a key material for industry decarbonisation

## AN ENDLESS CYCLE



Massive. Beautiful.  
Efficient.

## Reduce the environmental impact of your project with RE-local aluminium



RE-local aluminium, with a verified footprint of only 2.95 kg CO<sub>2</sub> per kg, is incorporated into our manufacturing process to produce new industrial components. In this way, we contribute sustainable solutions to the industry's value chain to meet increasing market demands and reduce the environmental impact of the final products.

\*Source: International Aluminium Institute and European Aluminium Association





## **Exlabesa Extrusion Padron, S. L.**

Pol. Ind. F. Quintá - Padrón  
15980 - A Coruña (Spain)  
Tel. 981 803 011 Fax 981 803 012  
[www.exlabesa.com](http://www.exlabesa.com)

QUALICOAT-SEASIDE | QUALIDECO | QUALANOD | QUALIMARINE | ISO 9001 | ISO 14001 | ISO 45001 | IATF 16949 | QB