

PRS-72

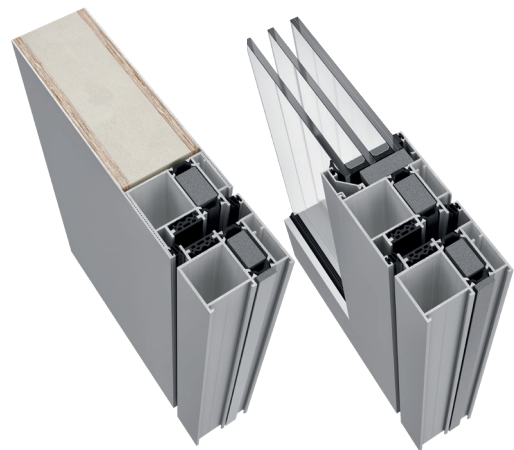
Door system
with thermal break.

The PRS-72 aluminium door system is designed to meet the requirements of any project in terms of strength, insulation, security and style. The versatility of this coplanar range allows the use of glass or panel in its leaf, bringing elegance to any space with both options. The frame can also be adapted for installation in curtain wall systems.



Features

- Anti Bi-metallic polyamide option
- Curtain wall compatible system
- 20 mm sill hinge coupling
- Sill cover set for installation and replacement on site
- Opening and closing resistance test: 1 000 000 cycles
- Impact test: Class 4
- Environmental Product Declaration EPD



TECHNICAL FEATURES

Design
The PRS-72 aluminium door has a modern design that allows panels or glass to be installed in the door sash. Both offer an excellent aesthetic result, thanks in part to their straight lines.

Features
The PRS-72 system has a fitting that can withstand a maximum weight of 180 kg, 20 mm polyamide, external seal and a 20 mm threshold. The glazed version allows a maximum glazing of 60 mm, while the panelled version is configured using 1,5 mm sheets, insulation foam and 8 mm boards.

Benefits
The PRS-72 system offers excellent thermal transmittance and insulation results, achieving 2,4 W/m²K (U_f), Class 4, E900 and C5 in AEV tests and 40 dB_(-1,-3) in acoustic insulation. It has also been certified with 1 000 000 open/close cycles and impact tests, achieving an excellent Class 4.

Possibilities
The panelled and glazed versions of the PRS-72 have leaves that can accommodate pin locks up to 35 mm, including swing locks in the panelled version. They also allow the use of anti-bi-metal polyamide.



Max. recommended dimensions (LxH)*	1600x3000 mm
Maximum recommended weight	180 kg/sash
Maximum glazing	60 mm
Polyamide	20 mm / Anti bi-metal
Thermal insulation U _w **	Up to 1,1 W/m ² K
Thermal insulation U _f	2,4 W/m ² K

Weather test results for a 1 sash door of 1200x2300 mm
* For a 1 sash door
** For a 1 sash door of 1400x3000 mm

