

## CRS-140

Thermal minimal  
sliding system.

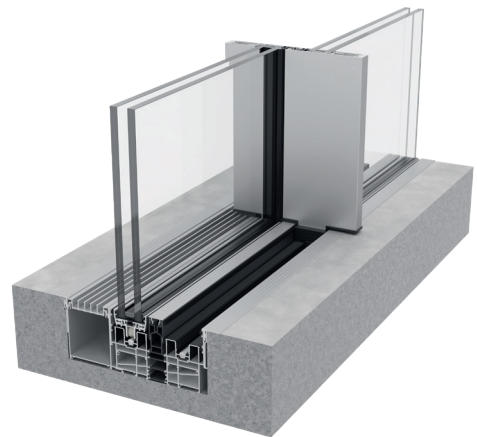
The innovative **CRS-140** minimalist sliding door with thermal break represents minimalism at its full expression, combining style and light with maximum safety, comfort and energy efficiency. With a single system of profiles, it can be easily adapted to a variety of configurations and installations, covering a wide range of project types.

Subtle and elegant, this large-size solution guarantees maximum transparency due to the 25 mm visible interlock and its invisible horizontal profiles. It also incorporates advanced technical and design solutions such as continuous flooring and open corner.



### Features

- Minimal visible section: bottom, top and sides sashes concealed in frame
- Ultra slim interlock of 25 mm
- Side sashes concealed in frame and multipoint side sashes with the option of integrating a continuous vertical handle
- 2-track and 3-tracks frames with full perimeter concealed option
- Floor concealed solution with pavement finish or aluminium finish
- 90° corner solution without mullion
- Two bearing options are available
- Environmental Product Declaration EPD



# TECHNICAL FEATURES

## Design

A large, minimalist sliding system designed to meet contemporary architectural trends. This innovative range, with its subtle and elegant design, guarantees maximum glazed area due to the 25 mm visible central node and the possibility of concealing the frame and sash all round.

## Features

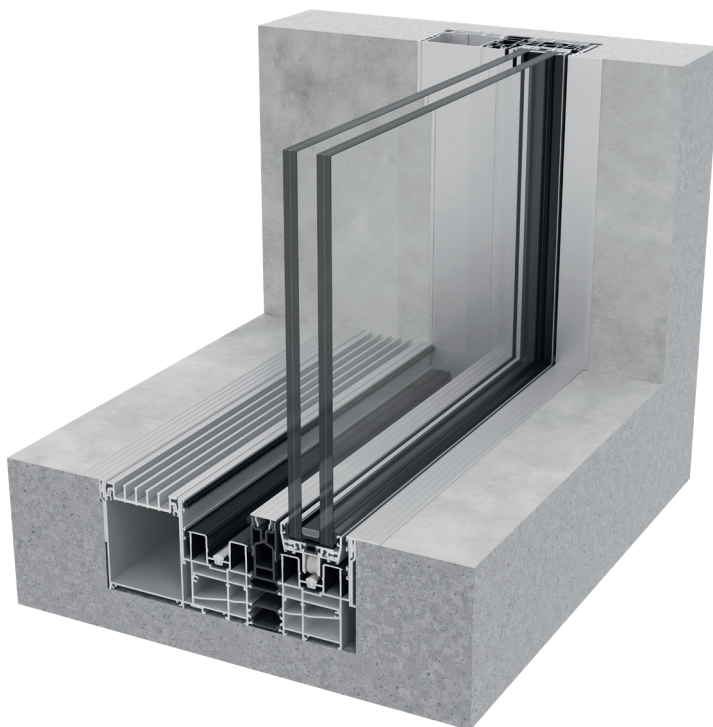
Maximum dimensions of 4000x4000 mm, weights of up to 500 kg and a maximum glass thickness of 42 mm.

## Benefits

The system also boasts exceptional technical performance in terms of thermal insulation, achieving excellent results in air permeability, watertightness and wind load resistance tests (Class 3 / 8A / C5), acoustic insulation (42 dB) and thermal transmittance ( $U_w$ : up to 1,0 W/m<sup>2</sup>K).

## Possibilities

This innovative range allows a variety of configurations to be created using the same basic profiles. It offers various combinations of crossover profiles, while maintaining a 25 mm visible section, and different side assembly solutions with visible or hidden sashes. It features advanced solutions for concealed pavement (with the same finish or in aluminium profile) and free open corner, as well as a unique patented system with two options for installing bearings in the sash or frame, while maintaining the same profiles.

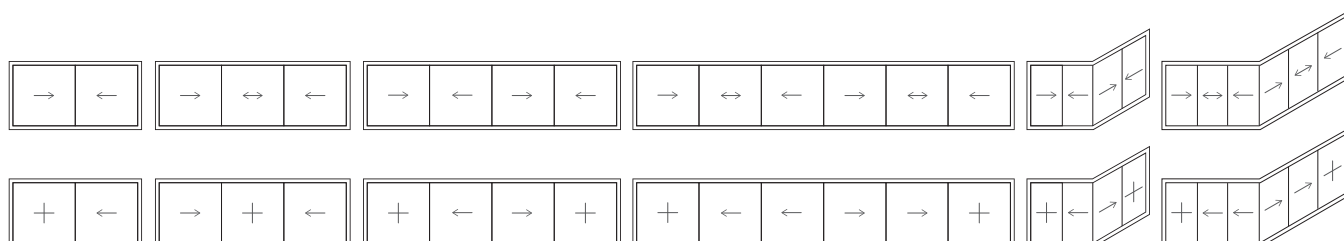
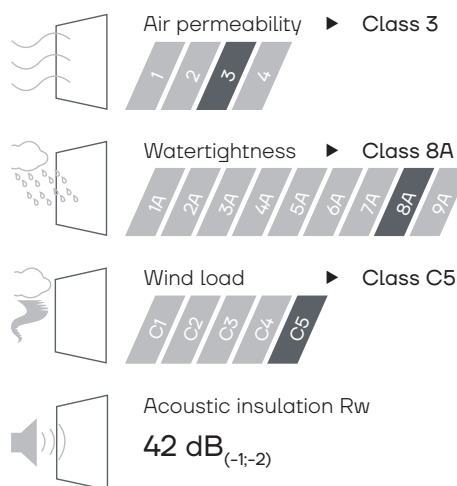


Max. recommended dimensions (LxH)*	4000x4000 mm
Maximum recommended weight*	500 kg/sash
Maximum glazing	42 mm
Polyamide	32-34 mm
Thermal insulation $U_w$ **	Up to 1,0 W/m <sup>2</sup> K
Thermal insulation $U_f$	3,2 W/m <sup>2</sup> K

Weather test results for a 2-sash window 3290x2450 mm

\* Per sash (for manual uses it is not recommended to exceed 400 kg/sash)

\*\* For a 2-sash window 8000x2700 mm



exlabesa.com