

RS-77 CE

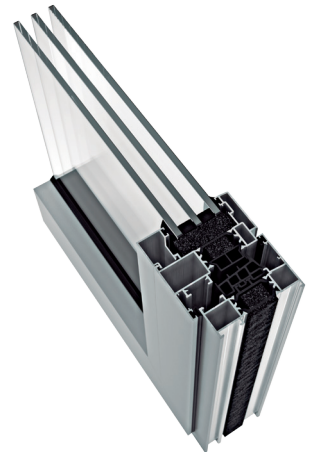
Hinged system
with thermal break.

The combination of safety, strength and insulation makes a joinery system of the highest quality. Exlabesa's RS-77 CE system meets all the necessary requirements to ensure maximum thermal insulation in any construction, as well as excellent performance in terms of comfort.



Features

- Euro Groove hardware
- Concealed hardware option, applicable to hinged, tilt-and-turn and micro-ventilation windows
- EPDM sponge central seal to reduce heat transmission and improve sound insulation compared to a conventional gasket
- Environmental Product Declaration EPD



TECHNICAL FEATURES

Design

The RS-77 CE sash window system is characterised by its aesthetic uniformity in line with current architectural trends, where straight lines predominate, making this system an elegant option in any building.

Features

The RS-77 CE sash window has a 77 mm frame depth and 35 mm polyamide thermal break. The EPDM sponge centre gasket improves the thermal performance of this system.

Benefits

Because the RS-77 CE aluminium window system contributes to energy savings, the AEV test result is excellent, achieving a classification of Class 4, E1050 and CE2500. In terms of thermal transmittance, its performance is 1,3 W/m²K at U_f.

Possibilities

The RS-77 CE series is available in virtually all opening types, including swing and folding. It is also available in a range of frame sizes, with concealed hardware and micro-ventilation.



Max. recommended dimensions (LxH)*	1400x2400 mm
Maximum recommended weight**	180 kg/sash
Maximum glazing	62 mm
Polyamide	35 mm
Thermal insulation U _w ***	Up to 0,8 W/m ² K
Thermal insulation U _f	1,3 W/m ² K

Weather test results for a 2-sash window 1230x1480 mm
 * For a 1 sash window
 ** Depending on the dimensions and type of opening
 *** For a 1 sash window 1100x2200 mm

