

## RS-77 CE

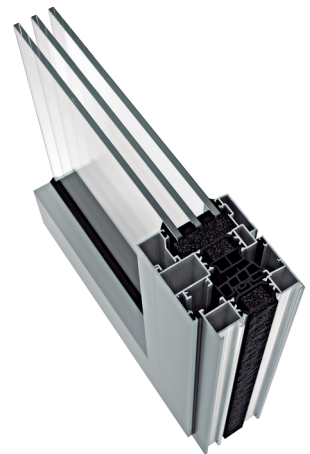
Hinged system  
with thermal break.

The combination of safety, strength and insulation makes a joinery system of the highest quality. Exlabesa's RS-77 CE system meets all the necessary requirements to ensure maximum thermal insulation in any construction, as well as excellent performance in terms of comfort.



### Features

- Euro Groove hardware
- Concealed hardware option, applicable to hinged, tilt-and-turn and micro-ventilation windows
- EPDM sponge central seal to reduce heat transmission and improve sound insulation compared to a conventional gasket
- Environmental Product Declaration EPD



# TECHNICAL FEATURES

## Design

The RS-77 CE sash window system is characterised by its aesthetic uniformity in line with current architectural trends, where straight lines predominate, making this system an elegant option in any building.

## Features

The RS-77 CE sash window has a 77 mm frame depth and 35 mm polyamide thermal break. The EPDM sponge centre gasket improves the thermal performance of this system.

## Benefits

Because the RS-77 CE aluminium window system contributes to energy savings, the AEV test result is excellent, achieving a classification of Class 4, E1050 and CE2500. In terms of thermal transmittance, its performance is 1,3 W/m<sup>2</sup>K at U<sub>f</sub>.

## Possibilities

The RS-77 CE series is available in virtually all opening types, including swing and folding. It is also available in a range of frame sizes, with concealed hardware and micro-ventilation.



Max. recommended dimensions (LxH)*	1400x2400 mm
Maximum recommended weight**	180 kg/sash
Maximum glazing	62 mm
Polyamide	35 mm
Thermal insulation U <sub>w</sub> ***	Up to 0,8 W/m <sup>2</sup> K
Thermal insulation U <sub>f</sub>	1,3 W/m <sup>2</sup> K

Weather test results for a 2-sash window 1230x1480 mm  
 \* For a 1 sash window  
 \*\* Depending on the dimensions and type of opening  
 \*\*\* For a 1 sash window 1100x2200 mm

**Air permeability** ▶ Class 4

**Watertightness** ▶ Class E1050

**Wind load** ▶ Class CE2500

**Acoustic insulation R<sub>w</sub>**  
**44 dB**<sub>(-2;-5)</sub>

