

RS-65 CE

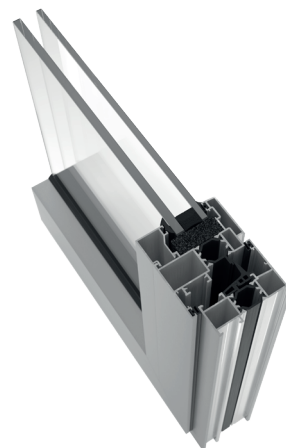
Hinged system
with thermal break.

Simple joinery that blends in with the overall design is essential to achieve an aesthetic balance. The straight lines of the RS-65 CE Series provide discretion and add elegance to the space in which they are installed.



Features

- Euro Groove hardware
- Concealed hardware and micro-ventilation option
- EPDM fabricated gaskets
- Various conventional clip-on and overlapping frame options
- Environmental Product Declaration EPD



TECHNICAL FEATURES

- Design**

The straight lines of the RS-65 CE Series provide discretion and add elegance to the space in which it is installed. It avoids the prominence of the elements to achieve a result where the window is perfectly integrated into the work as a whole.
- Features**

The RS-65 CE has a 65 mm frame depth and a 24 mm polyamide thermal break, giving it exceptional performance.
- Benefits**

The RS-65 CE system achieves excellent results in air permeability, watertightness and wind load resistance tests, achieving Class 4, E1500 and CE3000 classifications.
- Possibilities**

The RS-65 CE series allows the configuration of windows with inward or outward opening sashes, tilt and turn, projecting, single or double sash and fixed; also folding and parallel. The RS-65 CE has a wide range of adjustable latching points and a concealed hardware option for both swing and tilt and turn doors.



Max. recommended dimensions (LxH)*	1400x2400 mm
Maximum recommended weight**	180 kg/sash
Maximum glazing	50 mm
Polyamide	23,5 mm
Thermal insulation U_w ***	Up to 1,1 W/m ² K
Thermal insulation U_f	2,2 W/m ² K

Weather test results for a 2-sash window 1230x1480 mm
 * For a 1 sash window
 ** Depending on the dimensions and type of opening
 *** For a 1 sash window 1100x2200 mm

Air permeability ▶ Class 4

Watertightness ▶ Class E1500

Wind load ▶ Class CE3000

Acoustic insulation R_w
41 dB_(0;-2)

