

Esmeralda

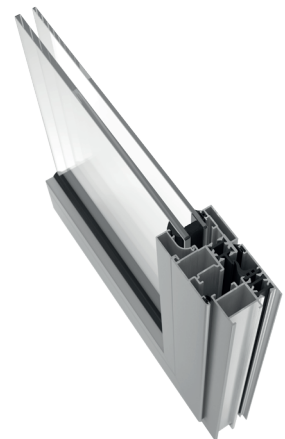
Hinged system
with thermal break.

A simple and competitive range that adapts to any environment. The **Esmeralda** window system is characterised by its reduced size and profile optimisation, making it one of the most competitive thermal break solutions on the market.



Features

- Euro Groove hardware
- Concealed hardware and micro-ventilation option
- Choice of straight or curved sash



TECHNICAL FEATURES

Design
The sober style of the **Esmeralda** window system brings elegance to the whole, highlighting the simplicity of its shapes, which gives it the ability to adapt to any environment.

Features
The **Esmeralda** range has a Euro Groove channel and a 15 mm polyamide thermal break. It is one of Exlabesa most competitive systems, characterised by the optimisation of its profiles.

Benefits
It has a triple sealing system, the most important part of which is the central EPDM seal. Its bench test results reach Class 4, E900 and C5 in air permeability, watertightness and wind load tests.

Possibilities
The **Esmeralda** system is available in concealed hardware and micro-ventilation versions, as well as straight or curved lines. It also allows glazing up to 34 mm.



Max. recommended dimensions (LxH)*	1400x2300 mm
Maximum recommended weight**	130 kg/sash
Maximum glazing	34 mm
Polyamide	14,8 mm
Thermal insulation U_w ***	Up to 1,5 W/m ² K
Thermal insulation U_f	3,5 W/m ² K

Weather test results for a 1230x1480 mm 2-sash window with roller shutter casement

* For a 1 sash window

** Depending on the dimensions and type of opening

*** For a 1 sash window 1100x2200 mm

