

## ECW-50 HL

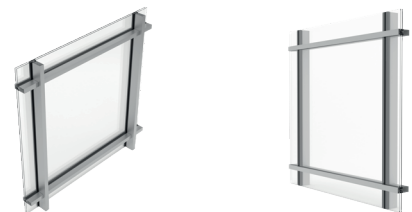
Horizontal semi-structural  
curtain wall.

Exlabesa's ECW-50 HL system is the best option to achieve a glass structure with a pronounced horizontality. The combination of concealed silicone fixings on the vertical axis and aluminium cover caps on the horizontal axis means that the vertical limits of the glass disappear, creating a light, semi-transparent envelope.



### Features

- Double EPDM perimeter seals
- Internal cascade drainage system
- Openings types: projecting and parallel projecting
- Environmental Product Declaration EPD



# TECHNICAL FEATURES

## Design

The ECW-50 HL system is an excellent choice for a lightweight semi-transparent glass structure where horizontal lines predominate, due to the concealed fixings on its vertical axis.

## Features

The ECW-50 HL Stick curtain wall version combines visible and selectively concealed fixing, with the horizontal joints fixed by a bolted cover system and the vertical joints clean thanks to the use of silicone on the outside. It also has a double EPDM perimeter seal.

## Benefits

The ECW-50 HL system achieves AE, RE1500 and Suitable (1500 Pa) ratings in air permeability, watertightness and wind load resistances tests because it has been tested to the highest standards to ensure full performance and safety. It features an internal cascade drainage system to ensure that water is properly drained to the outside.

## Possibilities

It offers a thermal break of 28 mm and a maximum glazing of 39 mm, with two types of integrated opening (projecting and parallel projecting). The depth of the uprights and crossbars varies according to the needs of each project, as does the finish of the assembly.



Horizontal aesthetics	Range of caps
Vertical aesthetics	Sealed 20 mm
Visible interior width	50 mm
Maximum glazing	41 mm
Thermal break	22-28 mm
Maximum weight of projecting windows	180 kg
Thermal insulation $U_{cw}$ *	Up to 1,8 W/m <sup>2</sup> K
Thermal insulation $U_f$	1,7 / 2,9 W/m <sup>2</sup> K

Weather test results for a sample size of 2750x6250 mm  
 \* For a module of 4340x2470 mm

