

ARS-72 HO

Hinged system
with thermal break.

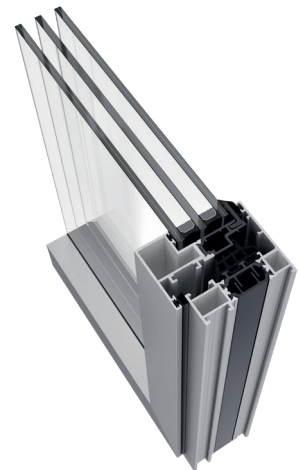
It is possible to achieve the best performance without sacrificing aesthetics. The **ARS-72 HO** hidden sash system is a key component of **Exlabesa's** thermally broken aluminium windows, thanks to its excellent technical performance, minimalist aesthetics and versatility.

The **ARS-72 HO** optimises its configuration to the maximum in order to achieve an elegant appearance for any building, while at the same time providing an excellent solution to the functional aspects of the most demanding projects and facilitating the manufacturing process.



Features

- Euro Groove hardware
- Concealed hardware option
- Option of concealed frame with drainage
- EPDM sponge central seal and cellular polyethylene foams
- Choice of standard (97 mm) or reduced (81 mm) face reversing profiles
- Environmental Product Declaration EPD



TECHNICAL FEATURES

Design

The ARS-72 HO series with Euro Groove hardware optimises its features to the maximum, achieving a unique aesthetic that gives personality to any space in which it is installed, while at the same time solving all functional aspects in an excellent fashion.

Features

The ARS-72 HO allows a maximum glazing of 42 mm and hardware up to 180 kg. It also features 37,5 mm polyamides in the sash and 34 mm polyamides in the frame, which are matched to the EPDM central gasket and cellular polyethylene foams to improve the technical performance of the system. Its manufacture is straightforward due to uniform design of the connecting elements.

Benefits

The ARS-72 HO is one of the most advanced models on the market, with excellent air permeability, watertightness, wind load, acoustic and thermal transmittance values.

Possibilities

The ARS-72 HO system allows frames with concealed drainage and concealed fittings to be installed without interfering with the central gasket. It also includes the ability to produce 2-sash windows with a reduced profile (81 mm) or symmetrical (97 mm) inverter profile. It also features georgian bars with the same dimensions, giving the system uniformity in fixed and folding elements.



Max. recommended dimensions (LxH)*	1400x2400 mm
Maximum recommended weight**	180 kg/sash
Maximum glazing	42 mm
Polyamide	34-37,5 mm
Thermal insulation U_w ***	Up to 0,8 W/m ² K
Thermal insulation U_f	1,8 W/m ² K

Weather test results for a 2-sash window 1230x1480 mm
 * For a 1 sash window
 ** Depending on the dimensions and type of opening
 *** For a 1 sash window 1100x2200 mm

