

ARS-72 HO C16

Hinged system
with thermal break.

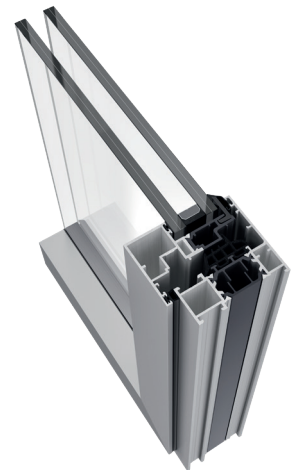
Exlabesa's constant commitment to offering the best solutions in aluminium carpentry systems has led to the development of the **ARS-72 HO C16** aluminium window. An elegant, minimalist range with maximum guarantees. Amongst its many qualities, it stands out for its unrivalled watertightness (E2550), excellent acoustic insulation (44 dB), excellent heat transfer coefficient (U_w : $0,8 \text{ W/m}^2\text{K}$) and its ease of manufacture.

The multitude of possibilities offered by the **ARS-72 HO C16** and its excellent features make it a perfect choice for all types of buildings; from single-family homes to collective housing, as well as commercial, hotel, institutional projects, etc.



Features

- 16 Groove hardware
- Concealed hardware option
- Option of concealed frame with drainage
- EPDM sponge central seal and cellular polyethylene foams
- Option of standard (101 mm) or reduced (81 mm) view inverter profile
- Environmental Product Declaration EPD



TECHNICAL FEATURES

Design

Straight lines are the hallmark of the ARS-72 HO C16 concealed sash system. Its minimalist design adds sophistication to any room, allowing for great luminosity without sacrificing maximum efficiency.

Features

The ARS-72 HO C16 allows a maximum glazing of 36 mm. It also features 37,5 mm polyamides in the sash and 34 mm polyamides in the frame, which are matched to the EPDM central gasket and cellular polyethylene foams to improve the technical performance of the system. Its manufacture is straightforward thanks to the uniform design of the connecting elements.

Benefits

The ARS-72 HO C16 is one of the most advanced models on the market, with excellent airtightness, watertightness, wind load, acoustic and thermal transmittance values.

Possibilities

The versatility of the ARS-72 HO C16 is reflected in the wide range of options available: concealed fittings in a 65 mm frame, concealed drainage and a variety of opening types. It also includes the ability to produce 2-sash windows with a reduced (81 mm) or symmetrical (101 mm) inverter profile. It also features georgian bars with the same dimensions, giving the system uniformity in fixed and folding elements.



Max. recommended dimensions (LxH)*	1400x2400 mm
Maximum recommended weight**	150 kg/sash
Maximum glazing	36 mm
Polyamide	34-37,5 mm
Thermal insulation U_w ***	Up to 0,8 W/m ² K
Thermal insulation U_f	1,8 W/m ² K

Weather test results for a 2-sash window 1230x1480 mm
 * For a 1 sash window
 ** Depending on the dimensions and type of opening
 *** For a 1 sash window 1100x2200 mm

