

## ARS-72 C16 M nima

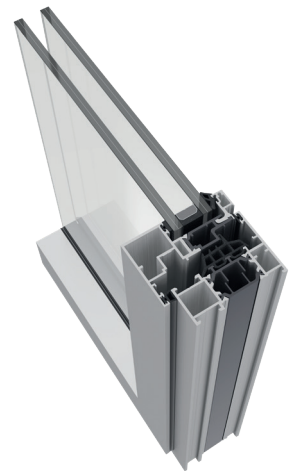
Hinged system  
with thermal break.

The new ARS-72 C16 M nima represents the perfect balance between functionality and design. It combines a minimalist sash system that maximises natural light, with a subtle and elegant design of 16 mm visible sashes inspired by traditional steel profiles. The 3 variants of glazing beads (straight, stepped or chamfered) and the 2 complementary georgian bars allow a wide range of configurations and aesthetics. A sophisticated solution with personality that also stands out for its exceptional technical performance in terms of thermal and acoustic insulation.



### Features

- 16 Groove hardware
- Visible sash with 16 mm glazing bead (straight, stepped or chamfered)
- Concealed hardware option
- EPDM sponge central seal and EPDM sponge door leaf seals
- Environmental Product Declaration EPD



# TECHNICAL FEATURES

## Design

The ARS-72 C16 Mínima 16 groove hardware system features an elegant and subtle minimal sash design inspired by traditional steel joinery. The 16 mm exposed external beading, available in 3 variants (straight, stepped and chamfered), together with the two complementary georgian bar versions, allows new aesthetic possibilities to be explored in a modern or industrial style.

## Features

The thermal break is made of 37,5 mm polyamide in the sash and 34 mm polyamide in the frame. The EDPM central gasket and sponge door gaskets give the system a high level of watertightness and soft closing action. The homogenisation of the assembly elements and their compatibility with Exlabesa's ARS-72 HO range of tools facilitates manufacturing.

## Benefits

The ARS-72 C16 Mínima series achieves outstanding values in air permeability, watertightness and wind load resistance tests (Class 4/E2100/C5), as well as high performance in acoustic insulation (45 dB) and thermal insulation ( $U_w$ : 0,9 W/m<sup>2</sup>K).

## Possibilities

The combination of beading and georgian bar profiles offers a wide range of configurations to adapt to any type of project with maximum guarantees.



Max. recommended dimensions (LxH)*	1400x2400 mm
Maximum recommended weight**	150 kg/sash
Maximum glazing	34 mm
Polyamide	34-37,5 mm
Thermal insulation $U_w$ ***	Up to 0,9 W/m <sup>2</sup> K
Thermal insulation $U_f$	2,0 W/m <sup>2</sup> K

Weather test results for a 2-sash window 1230x1480 mm  
 \* For a 1 sash window  
 \*\* Depending on the dimensions and type of opening  
 \*\*\* For a 1 sash window 1100x2200 mm

