

S-LIM

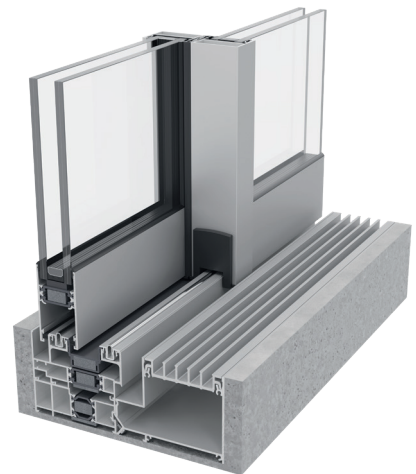
Sliding system
with thermal break.

The S-LIM sliding system combines a minimalist aesthetic design with outstanding technical performance. Its slim profiles and 35 mm interlock allow large glazing areas of up to 300 kg per sash while maximising natural light entry. It offers excellent thermal insulation (up to 1.0 W/m²K) and multiple options, including frames with up to 4 rails and different locking compositions (multi-point or flush) and sashes (fixed-sash and pocket).



Features

- Slim interlock: 35 mm
- 1-, 2-, 3- and 4-track
- Fixed-sash and pocket option
- Fully concealed frame option
- Exclusive aluminium grille drainage
- Compatible with Exlabesa's RS range
- Environmental Product Declaration EPD



TECHNICAL FEATURES

Design
 With its slimline design and 35 mm interlock, the S-LIM follows the current architectural trends towards large glazed areas. The possibility of the fully concealed frame creates a seamless connection between indoors and outdoors.

Features
 A system specially designed to create functional, durable and easy to use windows. It allows the installation of sashes weighing up to 300 kg, maximum glazing of 32 mm and different locking options both concealed and multi-point with the possibility of micro-ventilation.

Benefits
 The S-LIM offers a high level of technical performance, achieving a classification of class 3, 7A and CE2100 in air permeability, watertightness and wind resistance tests. It stands out for its excellent thermal insulation, guaranteeing an optimal indoor comfort.

Possibilities
 This versatile system offers a wide variety of technical solutions, with 2-, 3- and 4-rail frames for multiple sashes, 1-rail frames for compositions of fixed and mobile sashes, as well as the possibility of a pocket configuration by completely concealing the sashes within the construction.



Max. recommended dimensions (LxH)*	2700x2700 mm
Maximum recommended weight	300 kg/sash
Maximum glazing	32 mm
Polyamide	34 mm
Thermal insulation U_w **	Up to 1.0 W/m ² K
Thermal insulation U_f	2.8 W/m ² K

Weather test results for a 2-sash window 1230x1480 mm
 * Per sash
 ** For a 2-sash window 3200x2200 mm

Air permeability ▶ Class 3

Watertightness ▶ Class 7A

Wind load ▶ Class CE2100

Acoustic insulation R_w
36 dB (-1;-2)

