

Elevable GR

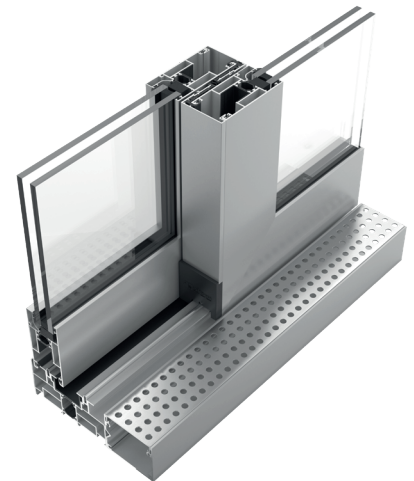
Lift & Slide system
with thermal break.

The **Elevable GR** has been redesigned to offer improved technical performance. It also has a cradle-to-grave Environmental Product Declaration, making it an excellent option for achieving sustainable building certifications such as BREEAM, LEED or GREEN.



Features

- Stainless steel track improves sliding performance compared to conventional aluminium tracks
- Multiple sash compositions can be realised in Frames of 2 and 3 tracks
- It incorporates a stainless steel water channel that guarantees watertightness and ensures correct installation
- Possibility of recessing the frame until it reaches the floor level finished both indoors and outdoors
- Environmental Product Declaration EPD



TECHNICAL FEATURES

Design

The new straight version of this system offers a modern and elegant aesthetic in line with the latest architectural trends, while allowing multi-sashes compositions in 2- and 3-track frames.

Features

The **Elevable GR** lift and slide system allows large sashes up to 400 kg to be moved and glass up to 39 mm thick to be installed. The glazing bead ensures easy installation of the glass on site.

Benefits

The design of the new **Elevable GR** system has improved its technical performance in all aspects of the AEV tests, where it has obtained a classification of Class 4, 7A and C4.

Possibilities

Lift and slide system: when opening, the sashes are raised slightly thanks to a mechanism that allows them to move smoothly and without friction. In the closed position, they rest on longitudinal gaskets, which promote air permeability.

In-line sliding system: allows large sliding windows to be installed at low cost.



Max. recommended dimensions (LxH)*	3300x3200 mm
Maximum recommended weight*	400 kg/sash
Maximum glazing	39 mm
Polyamide	23,5 mm
Thermal insulation U_w **	Up to 1,1 W/m ² K
Thermal insulation U_f	4,2 W/m ² K

Weather test results for a 2-sash window 3000x2300 mm
 * Per sash with lift-up fitting and additional carriage
 ** For a 2-sash window 6600x3200 mm

Air permeability ▶ Class 4

Watertightness ▶ Class 7A

Wind load ▶ Class C4

Acoustic insulation R_w
35 dB (-1;-2)

