

KC75

High performance window system.

The **KC75** is a high-performance aluminium casement window system designed to meet the demands of both contemporary new-build developments and renovation projects. Offering an exceptional balance of security, thermal efficiency, and elegant slim sightlines, it is perfectly suited to residential and commercial applications alike.

Engineered for versatility, the system is available in both top-hung and side-hung configurations. Its advanced central gasket design, combined with a thermally enhanced polyamide thermal break, delivers excellent insulation properties and significantly improved U-values.

The **KC75** can be internally or externally dry-glazed using clip-in beads, providing installation flexibility while maintaining a clean, refined appearance.

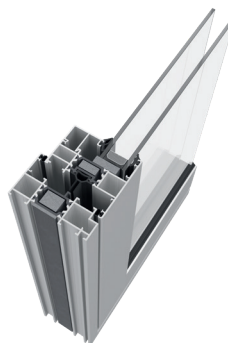
Developed in line with the latest Building Regulations, including BFRC and Part L standards, the system is also PAS 24 certified, ensuring a high level of security and performance for every project.



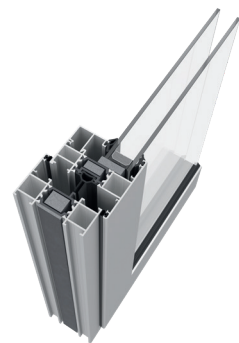
Features

- Flush sash option available
- Top and side hung applications
- Mechanical or crimping cleats option
- Internally or externally beaded
- Cills, couplers, add ons, curtain walling inserts available

Option
STANDARD SASH / FLUSH



Option
STANDARD SASH



TECHNICAL FEATURES

Design

The KC75 features a refined, contemporary design available in two distinctive styles, it can be specified as a modern casement window with crisp, clean lines or as a flush sash solution that delivers a seamless, streamlined appearance. This design flexibility allows the KC75 to complement a wide variety of architectural styles, from contemporary developments to more traditional renovations.

Features

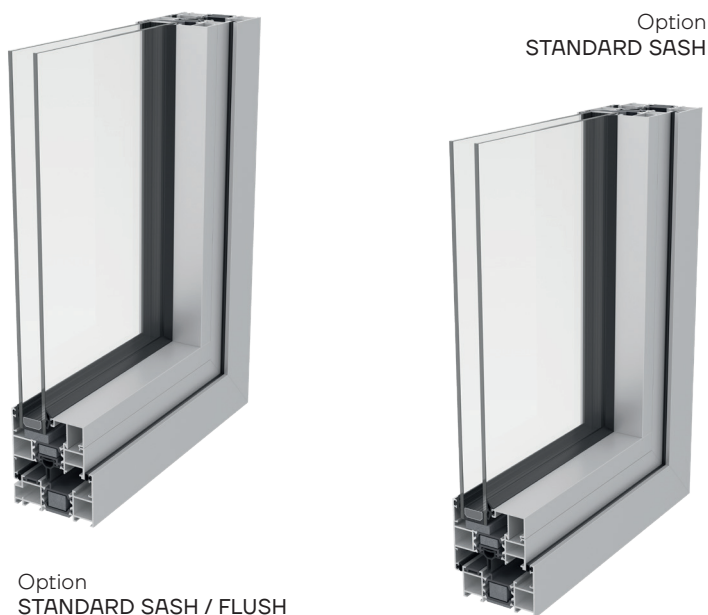
With a glazing range from 24 to 60 mm the system can easily accept double, triple glazed units or even units incorporating interstitial blinds.

Benefits

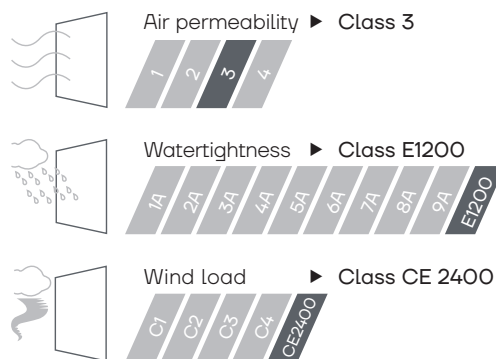
Made in Britain and fully compliant with current Building Regulations, the KC75 meets Part L and BFRC standards while delivering enhanced security through PAS 24 certification.

Possibilities

Made in Britain and fully compliant with current Building Regulations, the KC75 meets Part L and BFRC standards while delivering enhanced security through PAS 24 certification.



Maximum size	1500x1500 mm top hung 900x1500 mm side hung
Maximum weight	50 kg
Maximum glazing	60 mm
Polyamide	32 mm
U _w value	Double glaze - 1.3 W/m ² K Triple glaze - 0.9 W/m ² K



Weather tests according to standard BS6375-1

- BFRC
- PAS 24 Security
- BS6375-1
- PART L

