

# Xlaslide

Advanced sliding  
door system




# Slim sightlines. Maximum adaptability.

The Xlaslide patio door is a high-performance product developed to establish an exceptional connection with the outdoors and optimise natural light exposure. Its modern design centers around slim sightlines and an invisible outer frame.

This outstanding aluminium system offers a high level of adaptability with a broad range of advanced solutions. Among these is an innovative fully concealed outer frame that creates a smooth transition between spaces and enhances accessibility. It provides a slim 32 mm interlock option, as well as various reinforced interlock combinations to meet the most demanding wind pressure requirements. The intelligent design of the Xlaslide ensures premium performance in terms of weather resistance and thermal ratings.

The Xlaslide can be seamlessly combined with **Exlabesa** 75 mm systems to incorporate either fixed or openable side lights, providing an internally beaded system to maximize security. This sliding door is available with twin and triple track options, operating on a smooth-sliding heavy-duty roller system for years of hassle-free operation.

Its compatibility with the Exlabesa range of accessories, including corner cleats, gaskets, stainless steel track, and profile add-ons, makes Xlaslide the optimal choice for a cost-effective and fabricator-friendly solution.



Massive. Beautiful.  
Efficient.

## Features

- Complete range of interlocks options
- Double or triple glaze
- Twin & triple track options
- Internally beaded for extra security
- New fully concealed frame option available
- High effective water drainage solution
- High Insulated version
- Compatibility with Exlabesa systems and accessories range

✓ BS6375-1

✓ PART L

✓ PART M





## DESIGN

Thanks to its slim sightlines and invisible outer frame, the Xlaslide system is perfectly suited for contemporary large-format sliding doors, ensuring a seamless connection and full accessibility between the inside and outside.

## POSSIBILITIES

The Xlaslide sliding system provides advanced options as a fully concealed frame, water drainage solution and triple track. A range of different interlocks is also available, including standard, slim and reinforced, along with a high insulated version for the most demanding projects.

## FEATURES

This internally beaded system allows a sash size of 2500x2500 mm with a maximum of 200 kg per sash. Fully compatible with the Exlabesa range of accessories, it can be coupled to Exlabesa 75 mm systems to offer fixed or opening side lights.

## BENEFITS

The outstanding adaptability and smart design of the Xlaslide set the trend for a cost-effective, fabricator-friendly solution with excellent specifications. Made in Britain to exceed current Building Regulations.



## TRIPLE TRACK OPTION

Triple track sliding doors allow for long stretches of glazing that are ideal for both residential and commercial properties. Operating on a heavy-duty roller system, the panels slide over each other effortlessly, helping to fill the space with uninterrupted natural light.





#### DIFFERENT INTERLOCK OPTIONS AVAILABLE

Including standard, 32 mm slim and different combinations of reinforced interlocks.

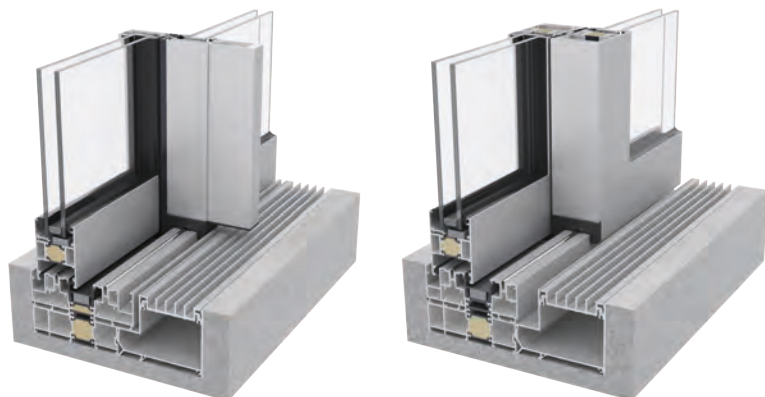




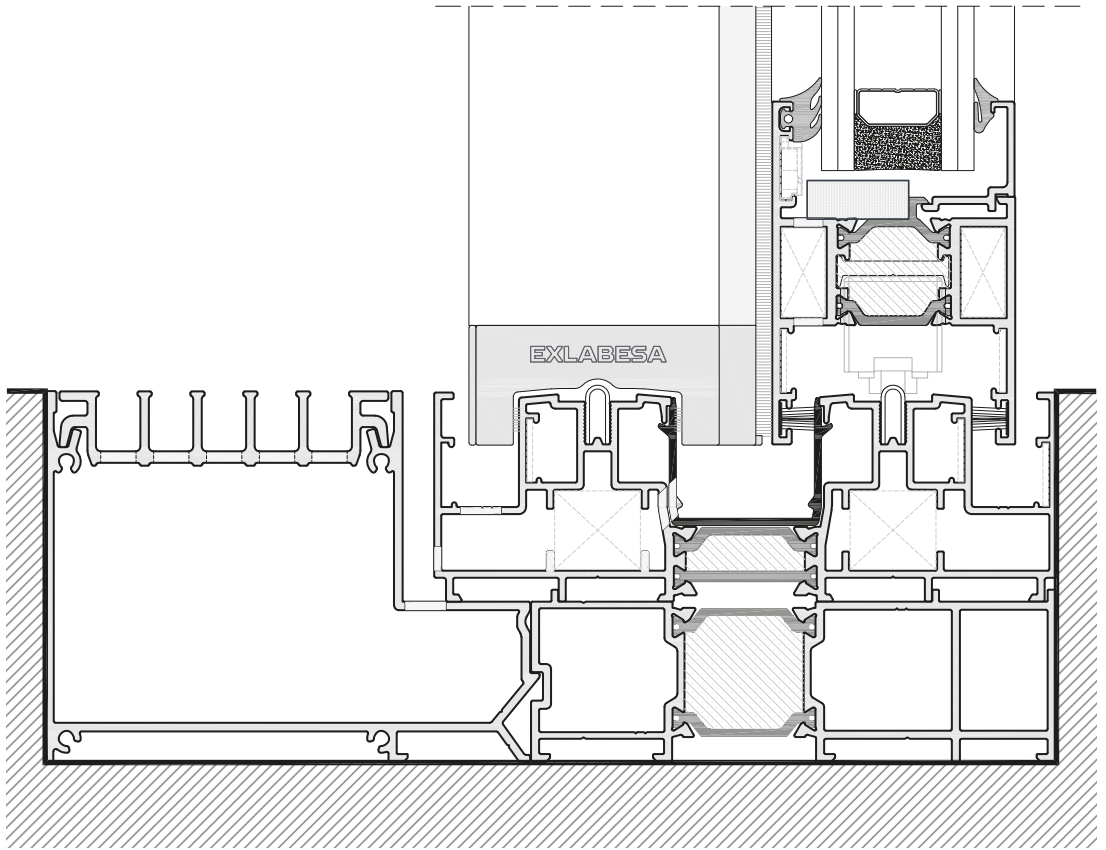


### FULLY CONCEALED FRAME

The Xlaslide patio door system also offers an innovative fully concealed outer frame option which allows a seamless interior and exterior transition avoiding the use of low thresholds without compromising a high effective water drainage which is fully compliant with Doc M standards.



Massive. Beautiful.  
Efficient.



Maximum sash size

2500x2500 mm

Maximum weight

200 kg

Maximum glazing

36 mm

$U_w$  value

Double glaze - 1,4 W/m<sup>2</sup>K

BS6375-1

PART M

Air permeability

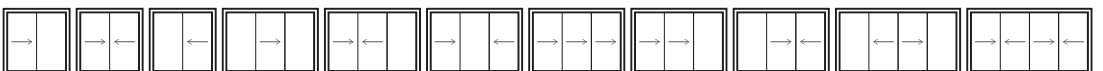
**Class 4**

Watertightness

**Class 5A**

Wind load

**Class B3**





## **Exlabesa Building Systems Ltd.**

Ogden Road - Wheatley Hills  
DONCASTER DN2 4SG  
Tel. +44 01302 762500 Fax +44 01302 762557  
[www.exlabesa.co.uk](http://www.exlabesa.co.uk)

QUALICOAT | ISO 9001 | PAS 24:2016

