

Xlaslide

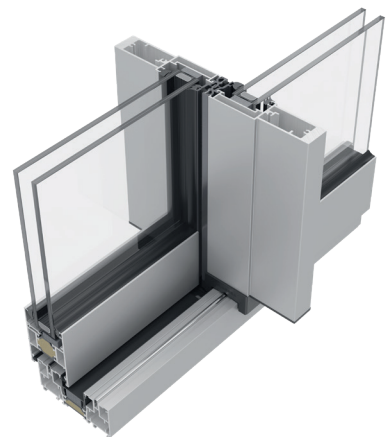
Sliding patio door.

Connecting the internal and external space, giving significance to glass is a trend in architecture. Xlaslide patio door, with its modern design focused on its slim sightlines, provides an extraordinary connection with the outside, maximizing the sunlight entry into the room.



Features

- Complete range of interlocks options
- Double or triple glaze
- Twin & Triple track options
- Internally beaded for extra security
- New fully concealed frame option available
- High effective water drainage solution
- High Insulated version
- Compatibility with Exlabesa systems and accessories range



TECHNICAL FEATURES

Design
Thanks to its slim sightlines and invisible outer frame, the Xlaslide system is perfectly suited for contemporary large-format sliding doors, ensuring a seamless connection and full accessibility between the inside and outside with a slim interlock detail of only 32 mm helping to fill the space with uninterrupted natural light.

Features
This internally beaded system allows a sash size of 2500x2500 mm with a maximum of 200 kg per sash. Fully compatible with the Exlabesa range of accessories, it can be coupled to Exlabesa 75 mm systems to offer fixed or opening side lights.

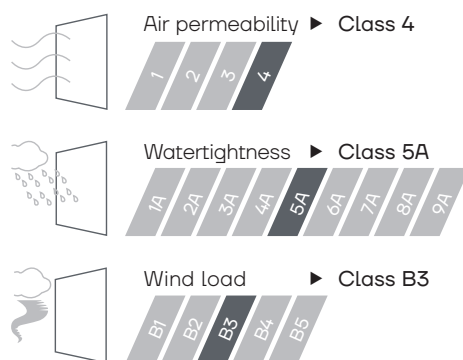
Benefits
The outstanding adaptability and smart design of the Xlaslide set the trend for a cost-effective, fabricator-friendly solution with excellent specifications. Made in Britain to exceed current Building Regulations.

Possibilities
The Xlaslide sliding system provides advanced options as a fully concealed frame, water drainage solution and triple track. A range of different interlocks is also available, including standard, slim and reinforced, along with a high insulated version for the most demanding projects. For an ultra-smooth action, Xlaslide owns bespoke high specification, adjustable and heavy-duty roller system.



Maximum leaf size	2500x2500 mm
Maximum weight	200 kg
Maximum glazing	36 mm
Polyamide	24 mm
U _w value	1,4 W/m ² K

Weather tests according to standard BS6375-1



✓ BS6375-1 ✓ PART L ✓ PART M

