

Xlafold

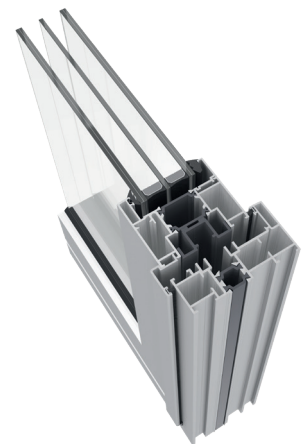
Bi-folding door.

Nothing beats the feel-good factor of an open living space. A seamless transition to outdoor living, Xlafold aluminium bi-folding doors offer superb slimline aesthetics with a strong, robust performance. This system maximises the glazed area thanks to their sleek, slimline aluminium profiles which deliver maximum light appeal.



Features

- Range of configurations available
- Half rollers available for even number of sash configurations
- Choice of glazing thicknesses
- Square or curved sash and outer frame options
- Square or chamfered beads
- Internally beaded for security
- Open in and open out available
- "Master" doors with 3 point locking available
- French door opening configuration available



TECHNICAL FEATURES

- Design**

Xlafold enables the creation of a sleek and modern bifolding door for enhanced visual appeal at any room.
- Features**

It has an ultra-smooth action, even in heavy leafs of maximum 100 kg. This system has bespoke, adjustable and heavy duty rollers, including a half roller option which ensure uniform pane widths for enhanced visual appeal.
- Benefits**

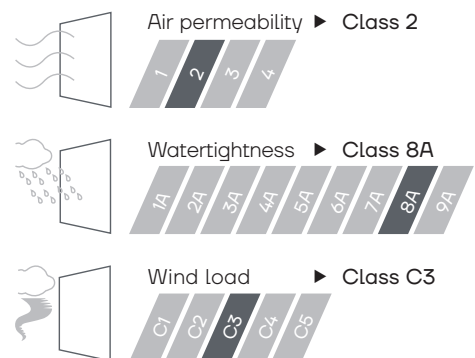
Xlafold is a thermally efficient bi-folding door which gives a U_w value of 1,2 W/m²K.
- Possibilities**

Xlafold facilitates glazing options from 10 to 40 mm, making it ideal for commercial single glazed sites or even to accommodate a triple glazed unit when thermal performance is key. This bi-folding door incorporates a low threshold cill option with a “clip” on ramps either side, enhancing the design options for the system.



Maximum leaf size	1000x2400 mm
Maximum weight	100 kg
Maximum glazing	49 mm
Polyamide	20/32 mm
U_w value	1,2 W/m ² K

Weather tests according to standard BS6375-1



✓ PAS 24 Security ✓ PART L

