

EXLABESA
INDUSTRY

Massive. Beautiful.
Efficient.



Standards Catalogue



Exlabesa Extrusion Doncaster Ltd.

Ogden Road - Wheatley Hills
DONCASTER DN2 4SG
Tel. 01302 762500 Fax 01302 762557
www.exlabesa.com



QUALICOAT
ISO 9001
PAS 24:2016

Exlabesa prohibits the total or partial reproduction of this catalogue by any written means, as well as magnetic or electronic media, without our explicit and written authorization.
Exlabesa reserves the right to modify, improve or eliminate without prior notice any of the products presented in this catalogue.
Exlabesa is not responsible for any possible errors that may occur in this catalogue.

EXLABESA

INDUSTRY

01	<u>Conversions</u>	3
02	<u>Round tubes</u>	7
03	<u>Rectangular tubes</u>	13
04	<u>Round bars</u>	21
05	<u>Square bars</u>	25
06	<u>Flat bars</u>	29
07	<u>Equal angles</u>	37
08	<u>Unequal angles</u>	41
09	<u>Equal channels</u>	45
10	<u>Unequal channels</u>	51
11	<u>I sections</u>	55
12	<u>T sections</u>	59
13	<u>Top hat sections</u>	63
14	<u>Z sections</u>	67

Exlabesa Extrusion Doncaster Ltd.

Ogden Road - Wheatley Hills
DONCASTER DN2 4SG
Tel. 01302 762500 Fax 01302 762557
www.exlabesa.co.uk



QUALICOAT
ISO 9001
PAS 24:2016

EXLABESA
INDUSTRY

01

CONVERSIONS

Vierteaguas
Umbral
Refuerzo

Exlabesa Extrusion Doncaster Ltd.

Ogden Road - Wheatley Hills
DONCASTER DN2 4SG
Tel. 01302 762500 Fax 01302 762557
www.exlabesa.co.uk



QUALICOAT
ISO 9001
PAS 24:2016

CONVERSIONS

Standards catalogue

Inches		mm
fractions	decimals	
1/64	0.0156	0.3969
1/32	0.0313	0.7938
3/64	0.0469	1.1906
1/16	0.0625	1.5875
5/64	0.0781	1.9844
3/32	0.0938	2.3813
7/64	0.1094	2.7781
1/8	0.1250	3.1750
9/64	0.1406	3.5719
5/32	0.1563	3.9688
11/64	0.1719	4.3656
3/16	0.1875	4.7625
13/64	0.2031	5.1594
7/32	0.2188	5.5563
15/64	0.2344	5.9531
1/4	0.2500	6.3500
17/64	0.2656	6.7469
9/32	0.2813	7.1438
19/64	0.2969	7.5407
5/16	0.3125	7.9375
21/64	0.3281	8.3344
11/32	0.3438	8.7313
23/64	0.3594	9.1282
3/8	0.3750	9.5250
25/64	0.3906	9.9219
13/32	0.4063	10.3188
27/64	0.4219	10.7157
7/16	0.4375	11.1125
29/64	0.4531	11.5094
15/32	0.4688	11.9063
31/64	0.4844	12.3032
1/2	0.5000	12.7001

Inches		mm
fractions	decimals	
33/64	0.5156	13.0969
17/32	0.5313	13.4938
35/64	0.5469	13.8907
9/16	0.5625	14.2876
37/64	0.5781	14.6844
19/32	0.5938	15.0813
39/64	0.6094	15.4782
5/8	0.6250	15.8751
41/64	0.6406	16.2719
21/32	0.6563	16.6688
43/64	0.6719	17.0657
11/16	0.6875	17.4626
45/64	0.7031	17.8594
23/32	0.7188	18.2563
47/64	0.7344	18.6532
3/4	0.7500	19.0501
49/64	0.7656	19.4470
25/32	0.7813	19.8438
51/64	0.7969	20.2407
13/16	0.8125	20.6376
53/64	0.8281	21.0345
27/32	0.8438	21.4313
55/64	0.8594	21.8282
7/8	0.8750	22.2251
57/64	0.8906	22.6220
29/32	0.9063	23.0188
59/64	0.9219	23.4157
15/16	0.9375	23.8126
61/64	0.9531	24.2095
31/32	0.9688	24.6063
63/64	0.9844	25.0032
1	1.0000	25.4001

Standard wire gauge		
swg	inch	mm
1	0.300	7.620
2	0.276	7.010
3	0.252	6.401
4	0.232	5.893
5	0.212	5.385
6	0.192	4.877
7	0.176	4.470
8	0.160	4.064
9	0.144	3.658
10	0.128	3.251
11	0.116	2.946
12	0.104	2.642
13	0.092	2.337
14	0.080	2.032
15	0.072	1.829
16	0.064	1.626
17	0.056	1.422
18	0.048	1.219
19	0.040	1.016
20	0.036	0.914
21	0.032	0.813
22	0.028	0.711
23	0.024	0.610
24	0.022	0.559
25	0.020	0.508
26	0.018	0.457

Kg/m	lb/ft
1.4880	1
1	0.672

Feet	Metres
3.2808	1
1	0.3048

Exlabesa Extrusion Doncaster Ltd.

Ogden Road - Wheatley Hills
DONCASTER DN2 4SG
Tel. 01302 762500 Fax 01302 762557
www.exlabesa.co.uk



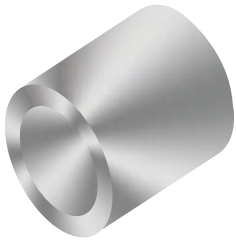
QUALICOAT
ISO 9001
PAS 24:2016

EXLABESA
INDUSTRY

02

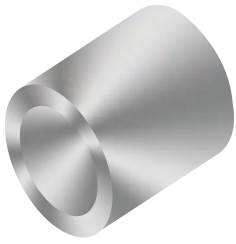
ROUND TUBES

References
Weight
Size



Section nº	Kg/m	Sizes (mm)	
		Ext Dia	Thickness
11608	0.14	9.15	2.45
11609	0.11	9.53	1.63
11232	0.322	15.9	3.05
11352	0.184	16	1.5
11432	0.172	18	1.2
11243	0.154	19	1
11299	0.222	19	1.5
11107	0.182	19.05	1.2
11108	0.244	19.05	1.65
11610	0.294	19.05	2.03
11109	0.437	19.05	3.25
14190	0.675	19.05	6.15
11348	0.187	23	1
11368	0.243	25	1.2
11111	0.3	25	1.5
11767	0.561	25	3
11225	0.641	25	3.5
11226	0.851	25	5
11362	0.247	25.4	1.2
11112	0.334	25.4	1.65
11113	0.408	25.4	2.05
11114	0.613	25.4	3.25
11500	0.843	26.5	4.5
11611	0.701	28.58	3.25
20191	0.743	30.5	3.25
11438	0.417	31.75	1.625
11868	0.514	31.75	2.03
11115	0.657	31.75	2.65
11116	0.786	31.75	3.25
11227	0.39	32	1.5
11117	0.849	32	3.5
11119	1.277	35	5
11240	0.466	38	1.5
11118	0.894	38	3
11120	0.512	38.1	1.65
11869	0.797	38.1	2.64
11121	0.964	38.1	3.25
TU03801	0.964	38.1	3.25
11880	1.351	38.1	4.76
11270	1.715	38.1	6.35
11447	0.487	39.6	1.5
11122	1.088	40	3.5

Sizes (inches)	
Ext Dia	Thickness
3/8	16 swg
5/8	
3/4	18 swg
3/4	16 swg
3/4	14 swg
3/4	10 swg
3/4	
	18 swg
	18 swg
1	16 swg
1	14 swg
1	10 swg
1 1/8	10 swg
	10 swg
1 1/4	16 swg
1.1/4	14 swg
1 1/4	12 swg
1 1/4	10 swg
1 1/2	16 swg
1.1/2	12 swg
1 1/2	10 swg
1 1/2	10 swg
1.1/2	3/16
1 1/2	1/4

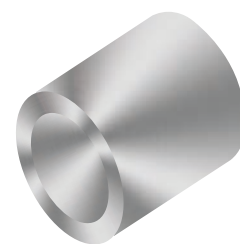


Section nº	Kg/m	Sizes (mm)	
		Ext Dia	Thickness
11138	0.962	57.15	2.05
11788	1.391	57.5	3
TU06001	0.698	60	1.4
11139	2.341	60	5
11277	4.257	60	10
22065	0.647	63.5	1.22
11565	0.859	63.5	1.63
11530	0.859	63.5	1.63
11140	1.667	63.5	3.25
11279	0.829	66.5	1.5
15331	1.008	67.6	1.8
11142	1.816	69.85	3.2
11342	0.875	70	1.5
20759	0.946	70	1.5
21437	1.06	75	1.7
11783	1.78	75	2.9
11612	0.779	76.2	1.22
11566	1.035	76.2	1.63
11306	1.047	76.2	1.65
11613	2.019	76.2	3.25
11145	2.018	76.2	3.25
11146	2.488	76.2	4.05
11696	5.408	76.2	9.53
TU07601	0.958	76.5	1.5
11305	1.003	80	1.5
11450	1.166	80	1.6
20066	1.084	80	1.63
11147	3.193	80	5
22112	1.054	84	1.5
11149	1.819	86.35	2.55
11873	2.37	88.9	3.25
11151	2.932	88.9	4.06
11152	4.463	88.9	6.35
11581	1.116	89	1.5
11774	2.929	89	4.05
11153	3.618	90	5
21045	1.466	95	1.85
11300	4.043	100	5
11857	1.388	101.6	1.63
11579	1.404	101.6	1.65
11583	1.696	101.6	2
11699	3.924	101.6	4.76

Sizes (inches)	
Ext Dia	Thickness
2 1/4	14 swg
2 1/2	18 swg
2 1/2	16 swg
2 1/2	16 swg
2 1/2	10 swg
2 3/4	1/8
3	18 swg
3	16 swg
3	
3	10 swg
3	10 swg
3	8 swg
3	3/8
1/16	
16swg	
3 1/2	10 swg
3 1/2	8 swg
3 1/2	1/4
3.5	1.5 mm
4	16 swg
4	
4	
4	3/16

ROUND TUBES

Standards catalogue



Section n°	Kg/m	Sizes (mm)	
		<i>Ext Dia</i>	<i>Thickness</i>
11552	1.068	101.6	1.25
11407	1.278	101.6	1.5
11156	5.149	101.6	6.35
16708	1.29	102.4	1.5
20100	1.385	110	1.5
11400	1.839	110	2
11468	1.912	114.3	2
21438	1.94	116	2
11698	3.424	127	3.25
21439	2.393	130	2.2
11775	5.191	140	4.5
11842	3.504	152.4	2.75

Sizes (inches)	
<i>Ext Dia</i>	<i>Thickness</i>
4	
4	
4	1/4
10 swg	

Exlabesa Extrusion Doncaster Ltd.

Ogden Road - Wheatley Hills
DONCASTER DN2 4SG
Tel. 01302 762500 Fax 01302 762557
www.exlabesa.co.uk



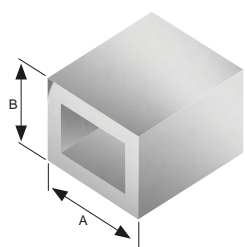
QUALICOAT
ISO 9001
PAS 24:2016

EXLABESA
INDUSTRY

03

RECTANGULAR TUBES

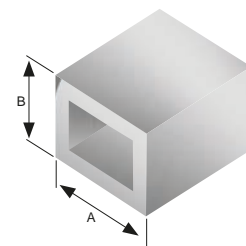
Vierteaguas
Umbral
Refuerzo



Section nº	Kg/m	Sizes (mm)			Corner Radii		Sizes (inches)		
		A	B	Thickness	exterior	interior	A	B	Thickness
2665	1.39	50.4	50.4	2.75	3.7	0.8			
11818	1.072	50.8	25.4	2.8	S	0.5	2	2	
11469	1.794	50.8	25.4	5	0.75	0.75	2	1	2.8
62029	1.308	50.8	31.75	3.18			2	1	
11797	1.505	50.8	50.8	3	5	2	2	1.25	1/8
7422	1.209	50.8	25.4	3.2	S	S	2	2	3 mm
3339	1.272	50.8	25.4	3.25	1.55	4.75	2	1	1/8
7423	1.431	50.8	38.1	3.2	S	S	2	1	10 swg
11638	0.816	50.8	50.8	1.55	2.38	0.79	2	1.5	1/8
11637	0.838	50.8	50.8	1.57	S	S	2	2	
7420	0.854	50.8	50.8	1.6	S	S	2	2	
11635	0.869	50.8	50.8	1.63	S	S	2	2	1/16
11358	1.308	50.8	50.8	2.5	1	1	2	2	16 swg
11636	1.642	50.8	50.8	3.18	S	S	2	2	
7421	1.65	50.8	50.8	3.2	S	S	2	2	1/8
14969	0.52	51	12.3	1.6	S	S			
11620	0.928	51	22.5	2.5	0.25	0.25			
11639	0.87	55	55	1.5	S	S			
3508	0.67	55.55	22.2	1.8	6.35	4.55			
11549	0.851	57.5	57.5	1.4	0.5	0.5			
13178	0.759	57.55	24.4	1.8	9.8	8			
11411	0.625	60	20	1.5	0.5	S			
11437	1.365	60	30	3	0.4	S			
11486	1.287	60	40	2.5	S	0.4			
21729	1.528	60	40	3	1	1			
16089	1.528	60	40	3	S	S			
11480	1.013	60	60	1.6	0.5	0.5			
11253	1.257	60	60	2	S	S			
11597	1.848	60	60	3	1.5	0.5			
17049	2.428	60	60	4	S	S			
12989	2.981	60	60	5	S	S			
7894	1.864	60.35	60.35	3	S	S			
11871	1.618	60.5	45	3	0.5	S			
STU07001	1.474	70	70	2	0.5	S			
STU07201	1.293	72	72	1.7	1	S			
11621	1.041	75	25	2	S	0.25			
11715	1.312	75	50	2	S	S			
11865	1.87	75	50	3	S	S			
16751	1.583	75	75	2	0.5	0.5			
11772	2.32	75	75	3	3	0.6			
11881	3.794	75	75	5	6.35	6.35			
11487	1.642	76.2	25.4	3.18	0.4	0.4	3	1	1/8

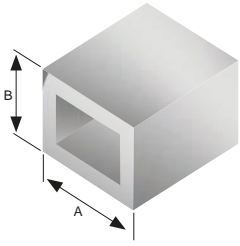
RECTANGULAR TUBES

Standards catalogue



Section nº	Kg/m	Sizes (mm)			Corner Radii	
		A	B	Thickness	exterior	interior
11551	2.03	76.2	25.4	4	0.7	0.3
11622	1.329	76.2	25.4	2.54	0.25	S
11332	1.675	76.2	25.4	3.25	S	S
11333	1.9	76.2	38.1	3.25	S	S
11623	2.079	76.2	50.8	3.18		
11538	3.934	76.2	50.8	6.35	1.0	1.0
4814	2.068	76.2	50.8	3.2	2.35	1.55
11320	1.274	76.2	76.2	1.63	6.5	4.87
11875	1.558	76.2	76.2	2	6.5	4.5
11488	2.517	76.2	76.2	3.18	0.4	0.4
RTU7701	0.829	77	25	1.6	5	3.4
21724	2.39	78	75	3	1	1
11250	1.253	80	40	2	S	S
11266	1.854	80	40	3	S	S
11258	2.428	80	40	4	S	S
11287	2.645	80	50	4	0.2	0.2
11539	4.046	80	80	5	3.0	1.0
11439	1.257	85	35	2	0.5	S
17603	2.618	85	60	3.5	S	S
11624	1.266	90	30	2.03	2	S
10211	1.312	100	25	2	S	S
11324	2.179	100	40	3	S	S
11626	1.528	100	45	2	S	S
11627	1.897	100	45	2.5	S	S
10841	2.228	100	45	2.5	S	S
11251	1.583	100	50	2	S	S
11872	2.341	100	50	3	S	S
11302	3.079	100	50	4	S	S
11858	4.766	100	60	6	10	4
16750	2.125	100	100	2	0.5	S
11555	2.642	100	100	2.5	0.25	0.25
11248	3.154	100	100	3	S	S
11773	3.893	100	100	3.8	5.8	2
11692	1.503	101.6	76.2	1.63	6	
11837	1.62	101.6	101.6	1.5	0.5	S
11588	1.678	101.6	101.6	1.63	7.03	5
11876	2.103	101.6	101.6	2	7.03	5.03
11862	2.159	101.6	101.6	2	S	S
11796	6.557	101.6	101.6	6.35	0.3	0.3
3140	1.343	101.6	25.4	2.05	0.8	0.5
9065	2.092	101.6	25.4	3.2	S	S
11628	1.941	101.6	44.45	2.54	S	S

Sizes (inches)		
A	B	Thickness
3	1	
3	1	
3	1	10 swg
3	1.5	10 swg
3	2	1/8
3	2	1/4
3	2	1/8
3	3	16 swg
3	3	2
3	3	1/8
4	3	1/16
4	4	
4	4	1/16
4	4	2
4	4	
4	4	1/4
4	1	
4	1	1/8
4	1.75	



Section nº	Kg/m	Sizes (mm)			Corner Radii	
		A	B	Thickness	exterior	interior
4310	2.411	101.6	44.45	3.2	S	S
11629	2.517	101.6	50.8	3.18	S	S
9064	2.531	101.6	50.8	3.2	S	S
RTU10202	1.924	102	45	2.5	S	S
RTU10201	2.475	102	45	3.25	S	S
11532	2.323	110	110	2	3	1
16154	1.908	120	60	2	S	S
11877	2.829	120	60	3	6	3
16153	2.125	120	80	2	S	S
11799	3.117	120	115	2.5	S	S
11878	3.805	120	120	3	6	3
11697	2.105	127	50	2.25	0.3	0.3
11630	2.504	135	25	3	0.25	S
11557	3.154	150	50	3	0.5	0.5
16570	3.561	150	75	3	3	3
11385	2.995	150	76	2.5	0.2	S
11533	3.294	150	100	2.5	3.5	1
11527	4.13	150	110	3	0.5	0.5
11854	4.412	150	150	2.8	7	5
15377	3.42	152.8	50.8	3.2	S	S
11402	2.669	155	15	3	0.2	1.0
18065	3.967	175	75	3	S	S
11802	5.247	200	50	4	S	S
11829	5.949	200	85	4	5	1

Sizes (inches)		
A	B	Thickness
4	1.75	1/8
4	2	1/8
4	2	1/8
		10 swg
6	2	1/8

Exlabesa Extrusion Doncaster Ltd.

Ogden Road - Wheatley Hills
DONCASTER DN2 4SG
Tel. 01302 762500 Fax 01302 762557
www.exlabesa.co.uk



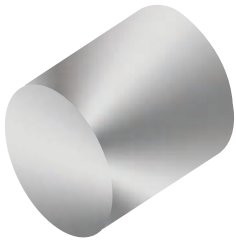
QUALICOAT
ISO 9001
PAS 24:2016

EXLABESA
INDUSTRY

04

ROUND BARS

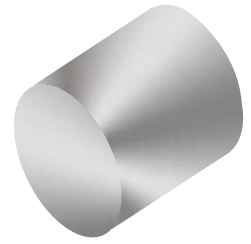
References
Weight
Size



Section nº	Kg/m	Sizes (mm) Diameter	Sizes (inches) Diameter
11649	0.134	7.94	5/16
11724	0.136	8	
11150	0.193	9.5	3/8
11290	0.214	10	
11725	0.263	11.11	7/16
11726	0.308	12	
11650	0.343	12.7	1/2
11343	0.344	12.7	1/2
11160	0.435	14.3	9/16
11737	0.502	15	
11728	0.511	15.5	
11161	0.538	15.9	5/8
11217	0.545	16	
11729	0.651	17.47	11/16
11730	0.692	18	
11731	0.771	19	
11651	0.773	19.05	3/4
11162	0.772	19.05	3/4
11163	0.851	20	
11732	0.907	20.64	13/16
11733	0.987	21.5	
11734	1.08	22	
11165	1.049	22.2	7/8
11735	1.13	23	
11727	1.207	23.81	15/16
11738	1.282	24.5	
11739	1.33	25	
11167	1.373	25.4	1
11740	1.444	26	
11289	1.553	27	
11742	1.675	28	
11743	1.798	28.58	1. 1/8
11744	1.797	29	
11745	1.923	30	
11746	1.944	30.16	1. 3/16
11171	2.146	31.75	1 1/4
11747	2.188	32	
11748	2.479	33.34	1 5/16
11749	2.578	34	
11750	2.686	34.93	1. 3/8
11175	2.607	35	
11751	2.974	36.52	1. 7/16

ROUND BARS

Standards catalogue



Section nº	Kg/m	Sizes (mm) Diameter
11752	3.054	37
11176	3.09	38.1
11291	3.406	40
11741	1.55	40.34
11753	3.639	41.28
11754	3.768	42
11177	4.205	44.45
11755	4.517	45
11756	4.845	47.63
11782	4.903	48
11757	5.402	49.22
11271	5.322	50
11179	5.493	50.8
11180	6.206	54
11182	6.438	55
11345	7.662	60
11184	8.582	63.5
11798	8.993	65

Sizes (inches) Diameter
1 1/2
1. 1/16
1. 5/8
1.75
1. 7/8
1. 15/16
2
2 1/4
2 1/2

Exlabesa Extrusion Doncaster Ltd.

Ogden Road - Wheatley Hills
DONCASTER DN2 4SG
Tel. 01302 762500 Fax 01302 762557
www.exlabesa.co.uk



QUALICOAT
ISO 9001
PAS 24:2016

EXLABESA
INDUSTRY

05

SQUARE BARS

Vierteaguas
Umbral
Refuerzo

Exlabesa Extrusion Doncaster Ltd.

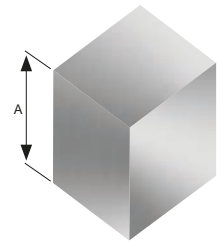
Ogden Road - Wheatley Hills
DONCASTER DN2 4SG
Tel. 01302 762500 Fax 01302 762557
www.exlabesa.co.uk



QUALICOAT
ISO 9001
PAS 24:2016

SQUARE BARS

Standards catalogue



Section nº	Kg/m	Sizes (mm)	Corner Radii
		A	exterior
11759	0.109	6.35	S
11528	0.17	7.94	0.5
11529	0.229	9.2	0.5
11313	0.225	9.4	1.25
11379	0.246	9.525	S
11760	0.271	10	S
11866	0.374	11.75	S
SQB01201	0.437	12.7	S
11185	0.437	12.7	S
11186	0.685	15.9	S
11187	0.983	19.05	S
11234	1.084	20	S
11761	1.339	22.23	S
11188	1.694	25	S
11189	1.748	25.4	S
11654	2.212	28.57	S
11762	2.439	30	S
11190	2.732	31.75	S
11763	3.934	38.1	S
11764	5.354	44.45	S
11197	6.994	50.8	S

Sizes (inches)
A
1/4
5/16
3/8
1/2
1/2
5/8
3/4
7/8
1
1 1/8
1 1/4
1. 1/2
1. 3/4
2

Exlabesa Extrusion Doncaster Ltd.

Ogden Road - Wheatley Hills
DONCASTER DN2 4SG
Tel. 01302 762500 Fax 01302 762557
www.exlabesa.co.uk



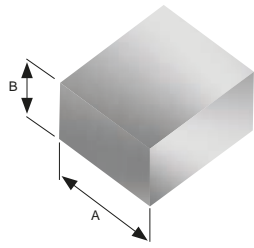
QUALICOAT
ISO 9001
PAS 24:2016

EXLABESA
INDUSTRY

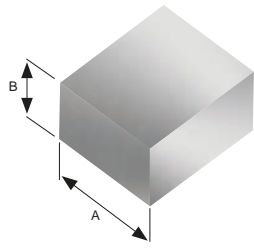
06

FLAT BARS

References
Weight
Size



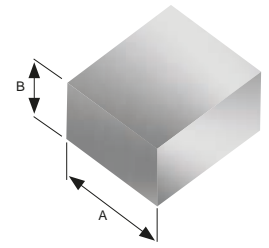
Section nº	Kg/m	Sizes (mm)		Corner Radii	Sizes (inches)	
		A	B	<i>exterior</i>	A	B
11425	0.103	12.7	3.18	FUL	1/2	1/8
11000	0.11	12.7	3.2	S	1/2	1/8
11655	0.163	12.7	4.76	S	1/2	3/16
11656	0.219	12.7	6.35	S	1/2	1/4
11657 (bar)	0.328	12.7	9.53	S	1/2	3/8
BAR01501	0.273	15.88	6.35	S	5/8	1/4
11001	0.138	15.9	3.2	S	5/8	1/8
11244	0.274	15.9	6.35	S	5/8	1/4
11063	0.547	15.9	12.7	S	5/8	1/2
11475	0.219	17	4.76	S		3/16
11303	0.195	18	4	0.25		
13641	0.209	18.3	4.3	0.25		
11427	0.154	19	3	0.4		
11002	0.165	19.05	3.2	S	3/4	1/8
11011	0.244	19.05	4.75	S	3/4	3/16
11023	0.328	19.05	6.35	S	3/4	1/4
13530	0.304	19.05	6.35	FUL	3/4	1/4
11045	0.49	19.05	9.5	S	3/4	3/8
11064	0.656	19.05	12.7	S	3/4	1/2
11079	0.821	19.05	15.9	S	3/4	5/8
11202	0.108	20	2	S		
11710	0.256	20	5	F		
11017	0.271	20	5	S		
10073	0.434	20	8	S		
10048	0.542	20	10	S		
11003	0.193	22.2	3.2	S	7/8	1/8
11024	0.382	22.2	6.35	S	7/8	1/4
11065	0.764	22.2	12.7	S	7/8	1/2
11297	0.122	22.5	2	S		
10200	0.203	25	3	0.25		
10045	0.271	25	4	0.5		
10046	0.339	25	5	0.5		
11018	0.407	25	6	S		
11349	0.542	25	8	S		
11053	0.678	25	10	S		
11058	0.813	25	12	S		
11004	0.22	25.4	3.2	S	1	1/8
11012	0.327	25.4	4.75	S	1	3/16
11025	0.436	25.4	6.35	S	1	1/4
11047	0.654	25.4	9.5	S	1	3/8
11066	0.874	25.4	12.7	S	1	1/2
11080	1.094	25.4	15.9	S	1	5/8



Section nº	Kg/m	Sizes (mm)		Corner Radii	Sizes (inches)	
		A	B	<i>exterior</i>	A	B
11050	1.144	44.45	9.5	S	1 3/4	3/8
11099	3.06	44.45	25.4	S	1 3/4	1
11104	3.825	44.45	31.75	S	1 3/4	1 1/4
11106	4.59	44.45	38.1	S	1 3/4	1 1/2
10365	0.678	50	5	S		
11517	0.792	50	6	F		
11020	0.813	50	6	S		
18553	0.949	50	7	0.4		
11038	1.084	50	8	S		
10049	1.355	50	10	0.5		
11060	1.626	50	12	S		
11259	2.033	50	15	S		
11008	0.441	50.8	3.2	S	2	1/8
11015	0.654	50.8	4.75	S	2	3/16
11030	0.874	50.8	6.35	S	2	1/4
11461	1.093	50.8	7.94	S	2	5/16
11051	1.308	50.8	9.5	S	2	3/8
11069	1.748	50.8	12.7	S	2	1/2
5820	2.4	50.8	17.45	S	2	11/16
11088	2.623	50.8	19.05	S	2	3/4
11100	3.497	50.8	25.4	S	2	1
11105	4.371	50.8	31.75	S	2	1 1/4
11604	5.245	50.8	38.1	S	2	1 1/2
3619	2.552	51.85	18.55	5.1		
11495	0.724	53.35	5	0.5		
64555	1.463	54	10	0.3		
11711	0.731	55	5	F		
11021	0.976	60	6	S		
11039	1.301	60	8	S		
11061	1.951	60	12	S		
11077	2.439	60	15	S		
11273	3.252	60	20	S		
11096	4.065	60	25	S		
11457	0.819	63.5	4.76	S	2 1/2	3/16
11032	1.093	63.5	6.35	S	2 1/2	1/4
11052	1.635	63.5	9.5	S	2 1/2	3/8
11071	2.184	63.5	12.7	S	2 1/2	1/2
11089	3.278	63.5	19.05	S	2 1/2	3/4
11101	4.371	63.5	25.4	S	2 1/2	1
11716	1.761	65	10	0.3		
9641	4.309	65.75	24.25	6		
3620	3.263	66.15	18.55	5.1		

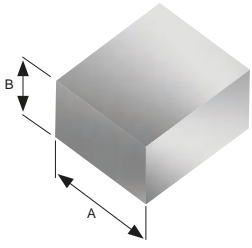
FLAT BARS

Standards catalogue



Section nº	Kg/m	Sizes (mm)		Corner Radii
		A	B	exterior
11706	1.117	70	6	F
11375	0.293	72	1.5	S
11705	1.002	75	5	F
11308	1.22	75	6	S
11523	1.588	75	8	F
11237	1.626	75	8	S
11238	2.033	75	10	S
11062	2.439	75	12	S
11325	3.049	75	15	S
11350	3.049	75	15	S
11661	0.206	76.2	1	S
11009	0.661	76.2	3.2	S
11016	0.981	76.2	4.75	S
11033	1.311	76.2	6.35	S
11072	2.623	76.2	12.7	S
11351	1.301	80	6	S
11041	1.734	80	8	S
11254	2.168	80	10	S
11094	4.336	80	20	S
11861	0.764	88.9	3.175	S
11090	4.59	88.9	19.05	S
11707	1.442	90	6	F
11260	2.439	90	10	S
11073	3.122	96	12	S
11712	1.605	100	6	F
11694	1.625	100	6	0.5
11261	2.168	100	8	S
11055	2.71	100	10	S
11262	6.775	100	25	S
11010	0.881	101.6	3.2	S
11034	1.748	101.6	6.35	S
11074	3.497	101.6	12.7	S
11844	4.349	101.6	15.8	0.5
11102	6.994	101.6	25.4	S
11354	2.867	106	10	1.5
11827	1.768	110	6	F
11344	2.981	110	10	S
11519	1.93	120	6	F
11522	2.564	120	8	F
11708	2.012	125	6	F
11035	2.185	127	6.35	S
11075	4.371	127	12.7	S

Sizes (inches)	
A	B
3	
3	1/8
3	3/16
3	1/4
3	1/2
3 1/2	1/8
3 1/2	3/4
	NO DIE
4	1/8
4	1/4
4	1/2
4	5/8
4	1
5	1/4
5	1/2



Section nº	Kg/m	Sizes (mm)		Corner Radii
		A	B	<i>exterior</i>
11870	3.523	130	10	S
11036	2.623	152.4	6.35	S
11850	3.934	152.4	9.525	S
11846	5.245	152.4	12.7	S
11768	7.868	152.4	19.05	0.25
11526	2.581	160	6	F
11713	2.581	160	6	F
11843	6.937	160	16	0.5
11564	7.317	180	15	S
11709	3.231	200	6	F
11791	4.336	200	8	0.25
11521	4.299	200	8	F
11792	2.439	225	4	S

Sizes (inches)	
A	B
6	1/4
6	3/8
6	1/2
6	3/4

Exlabesa Extrusion Doncaster Ltd.

Ogden Road - Wheatley Hills
DONCASTER DN2 4SG
Tel. 01302 762500 Fax 01302 762557
www.exlabesa.co.uk



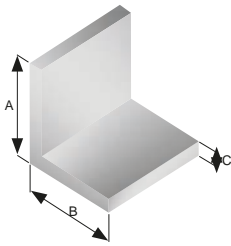
QUALICOAT
ISO 9001
PAS 24:2016

EXLABESA
INDUSTRY

07

EQUAL ANGLES

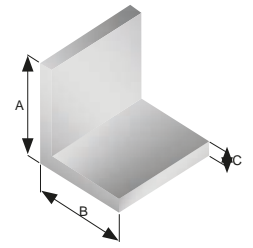
Vieriteguas
Umbral
Refuerzo



Section nº	Kg/m	Sizes (mm)			Corner Radii		Sizes (inches)		
		A	B	C	exterior	interior	A	B	C
1075	0.101	12.7	12.7	1.6	S	S	1/2	1/2	1/16
1272	0.19	12.7	12.7	3.2	S	S	1/2	1/2	1/8
1076	0.129	15.9	15.9	1.6	S	S	5/8	5/8	1/16
4455	0.22	15.9	15.9	3.2	S	S	5/8	5/8	1/8
11662	0.284	19	19	3	S	S			
6787	0.127	19.05	19.05	1.25	S	S	3/4	3/4	
814	0.158	19.05	19.05	1.6	S	S	3/4	3/4	1/16
465	0.301	19.05	19.05	3.2	S	S	3/4	3/4	1/8
17043	0.206	20	20	2	S	S			
11274	0.301	20	20	3	S	S			
1077	0.192	22.2	22.2	1.6	S	S	7/8	7/8	1/16
1079	0.355	22.2	22.2	3.2	S	S	7/8	7/8	1/8
11806	0.197	25	25	1.5	S	S			
10028	0.322	25	25	2.5	S	S			
9922	0.382	25	25	3	S	S			
11663	0.212	25.4	25.4	1.59	S	S	1	1	1/16
1078	0.21	25.4	25.4	1.6	S	S	1	1	1/16
409	0.412	25.4	25.4	3.2	S	S	1	1	1/8
11664	0.594	25.4	25.4	4.76	S	S	1	1	3/16
3660	0.764	25.4	25.4	6.35	S	S	1		1/4
10360	0.314	30	30	2	S	S			
9955	0.463	30	30	3	S	S			
1886	0.266	31.75	31.75	1.6			1 1/4	1 1/4	1/16
11665	0.52	31.75	31.75	3.18	S	0.25	1 1/4	1 1/4	1/8
698	0.523	31.75	31.75	3.2	S	S	1 1/4	1 1/4	1/8
468	0.758	31.75	31.75	4.75	S	S	1 1/4	1 1/4	3/16
1259	0.984	31.75	31.75	6.35	S	S	1 1/4	1 1/4	1/4
11585	0.57	37	37	3	3	0.5			
11667	0.476	38	38	2.4	S	S			
11668	0.593	38	38	3	S	S			
1497	0.328	38.1	38.1	1.65	S	S	1 1/2	1 1/2	16 swg
11553	0.632	38.1	38.1	3.2	S	S	1 1/2	1 1/2	1/8
1495	0.923	38.1	38.1	4.75	S	S	1 1/2	1 1/2	3/16
1258	1.202	38.1	38.1	6.35	S	S	1 1/2	1 1/2	1/4
11770	0.524	40	40	2.5	S	S			
11295	0.626	40	40	3	S	S			
9956	0.824	40	40	4	S	S			
11296	1.016	40	40	5	S	S			
11369	1.377	43.5	43.5	6.3	0.5	S			
EA04401	0.691	44	44	3	S	S			
11670	0.66	50	50	2.5	S	S			
17000	0.789	50	50	3	S	S			

EQUAL ANGLES

Standards catalogue



Section nº	Kg/m	Sizes (mm)			Corner Radii	
		A	B	C	exterior	interior
10363	1.041	50	50	4	S	S
11671	1.287	50	50	5	S	S
12617	1.528	50	50	6	S	S
1676	0.854	50.8	50.8	3.2	S	S
11789	0.93	50.8	50.8	3.5	0.2	0.2
1181	1.247	50.8	50.8	4.75	S	S
1180	1.637	50.8	50.8	6.35	S	S
11672	0.805	51	51	3	S	S
11673	1.314	51	51	5	S	S
11489	1.067	63.5	63.5	3.18	0.4	0.4
1399	2.08	63.5	63.5	6.35	S	S
17001	2.341	75	75	6	S	S
17045	3.079	75	75	8	S	S
11298	3.794	75	75	10	S	S
6963	1.293	76.2	76.2	3.2	S	S
1285	2.513	76.2	76.2	6.35	S	S
11853	3.154	100	100	6	S	S
16163	5.163	100	100	10	S	5
10205	3.388	101.6	101.6	6.35	S	S
11849	4.999	101.6	101.6	9.525	S	S
11441	3.804	120	120	6	S	S
16161	7.892	150	150	10	S	7.5

Sizes (inches)		
A	B	C
2	2	1/8
2	2	
2	2	3/16
2	2	1/4
2 1/2	2 1/2	1/8
2 1/2	2 1/2	1/4
3	3	1/8
3	3	1/4
4	4	1/4
4	4	3/8

Exlabesa Extrusion Doncaster Ltd.

Ogden Road - Wheatley Hills
DONCASTER DN2 4SG
Tel. 01302 762500 Fax 01302 762557
www.exlabesa.co.uk



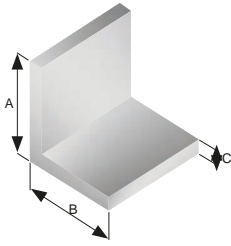
QUALICOAT
ISO 9001
PAS 24:2016

EXLABESA
INDUSTRY

08

UNEQUAL ANGLES

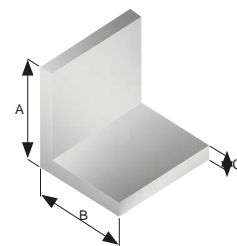
References
Weight
Size



Section nº	Kg/m	Sizes (mm)			Corner Radii		Sizes (inches)		
		A	B	C	exterior	interior	A	B	C
6772	0.117	15.9	4.75	2.4	1.2	S	5/8	3/16	3/32
3159	0.129	19	12.7	1.55	S	S	3/4	1/2	1/16
3743	0.114	19.05	9.5	1.55	S	S	3/4	3/8	1/16
14796	0.117	20	10	1.5	S	S			
11327	0.152	20	10	2	S	S			
11765	0.276	21	16	3	S	S			
11467	0.157	24	6	2.5	S	S			
11409	0.308	25	16	3	S	S			
3225	0.156	25.4	12.7	1.55	S	S	1	1/2	1/16
2619	0.299	25.4	12.7	3.2	S	S	1	1/2	1/8
6773	0.253	25.4	15.9	2.4	S	S	1	5/8	3/32
2431	0.328	25.4	15.9	3.2	S	S	1	5/8	1/8
3335	0.354	25.4	19.05	3.2	S	S	1	3/4	1/8
11640	0.388	29.77	21	3	S	S			
11641	0.157	30	10	1.5	S	S			
13085	0.214	31.75	19.05	1.6	S	S	1 1/4	3/4	1/16
1536	0.409	31.75	19.05	3.2	S	S	1 1/4	3/4	1/8
4500	0.464	31.75	25.4	3.2	S	S	1 1/4	1	1/8
11410	0.439	32	25	3	S	S			
11397	0.287	35	20	2	1/S	S			
11367	0.409	35.5	27.4	2.5	S	S			
21996	0.461	36	24	3	S/F	S			
11642	0.488	38	25	3	S	S			
3019	0.411	38.1	12.7	3.2	S	S	1 1/2	1/2	1/8
3735	0.238	38.1	19.05	1.55	S	S	1 1/2	3/4	1/16
2376	0.463	38.1	19.05	3.2	S	S	1 1/2	3/4	1/8
11643	0.492	38.1	22.22	3.18	S	S	1 1/2	7/8	1/8
6788	0.328	38.1	25.4	2.05	S	S	1 1/2	1	14 swg
2339	0.519	38.1	25.4	3.2	S	S	1 1/2	1	1/8
2407	0.756	38.1	25.4	4.75	S	S	1 1/2	1	3/16
10361	0.314	40	20	2	S	S			
11466	0.314	40	20	2	S	S			
11315	0.301	40	25	1.75	S	S			
10029	0.504	40	25	3	S	S			
7474	0.439	40.65	25.4	2.55	S	S		1	
11605	0.502	41	25	3	4.5	1.5			
11644	0.51	44	22	3	S	S			
1311	0.519	44.45	19.05	3.2	S	S	1 3/4	3/4	1/8
12848	0.55	44.45	22.2	3.2	S	S	1 3/4	7/8	1/8
11448	0.356	44.45	22.23	2.03	S	S	1 3/4	7/8	14 swg
11431	0.299	50	25	1.5	S	S			
11702	0.453	50	25	2.3	S	S			

UNEQUAL ANGLES

Standards catalogue



Section nº	Kg/m	Sizes (mm)			Corner Radii	
		A	B	C	exterior	interior
11575	0.585	50	25	3	S	S
16757	0.382	50	40	1.6	S	S
11647	0.601	50.8	22.22	3.18	S	S
11646	0.629	50.8	25.4	3.18	S	S
2340	0.627	50.8	25.4	3.2	S	S
21744	0.626	50.8	25.4	3.2	S/F	S
2395	0.923	50.8	25.4	4.75	S	S
3393	1.203	50.8	25.4	6.35	S	S
11444	0.376	50.8	38.1	1.59	S	S
2804	0.738	50.8	38.1	3.2	S	S
11860	1.085	50.8	38.1	4.76	S	S
6838	1.425	50.8	38.1	6.35	S	S
21956	1.645	57	26	7.9	S	8
22318	0.312	58.25	20	1.5	S	S
11328	0.531	60	40	2	S	S
11275	1.287	60	40	5	S	S
11336	0.743	63.5	25.4	3.2	S	S
11607	0.848	63.5	38.1	3.18	S	S
12531	0.938	63.5	50.8	3.2	3.16	2.8
5492	1.888	63.5	50.8	6.35	S	S
11429	0.992	75	50	3	S	S
11282	1.057	75	50	3.2	S	S
16639	2.537	75	50	8	S	S
11648	0.797	76	25	3	S	S
2944	0.847	76.2	25.4	3.2	S	S
3258	1.409	76.2	38.1	4.75	S	S
4426	1.86	76.2	38.1	6.35	S	S
11337	1.575	76.2	50.8	4.75	S	S
697	2.083	76.2	50.8	6.35	S	S
11406	1.558	90	30	5	S	S
11570	2.131	100	70	4.76	S	S
13767	1.073	101.6	25.4	3.2	S	S
10973	1.293	101.6	50.8	3.2	S	S
3105	2.513	101.6	50.8	6.35	S	S
12513	4.374	101.6	76.2	9.5	S	8.4
11690	0.951	105	15	3	S	S
11691	1.033	105	25	3	S	S
20371	1	120	30	2.5	S	S
16781	5.859	125	100	10	7.5	S
11845	2.949	127	50.8	6.35	S	S
11811	3.61	152	76	6	S	S
11848	5.655	152.4	76.2	9.525	S	S

Sizes (inches)		
A	B	C
2	7/8	1/8
2	1	1/8
2	1	1/8
2	1	1/8
2	1	3/16
2	1	1/4
2	1 1/2	1/16
2	1 1/2	1/8
2	1 1/2	3/16
2	1 1/2	1/4
2 1/2	1	1/8
2 1/2	1 1/2	1/8
2 1/2	2	1/8
2 1/2	2	1/4
3	1	1/8
3	1 1/2	3/16
3	1 1/2	1/4
3	2	3/16
3	2	1/4
4	1	1/8
4	2	1/8
4	2	1/4
5	2	1/4
6	3	3/8

Exlabesa Extrusion Doncaster Ltd.

Ogden Road - Wheatley Hills
DONCASTER DN2 4SG
Tel. 01302 762500 Fax 01302 762557
www.exlabesa.co.uk



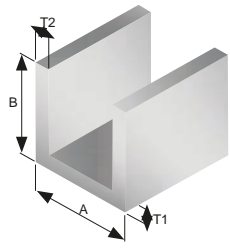
QUALICOAT
ISO 9001
PAS 24:2016

EXLABESA
INDUSTRY

09

EQUAL CHANNELS

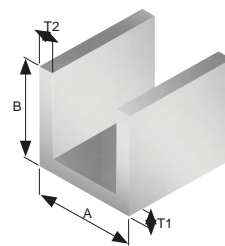
Vierteaguas
Umbral
Refuerzo



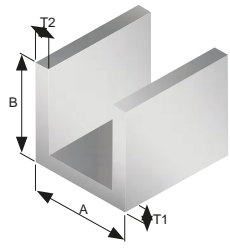
Section nº	Kg/m	Sizes (mm)				Radii		
		A	B	T1	T2	exterior	interior	ends
12882	0.255	10	15	7	1.5	S	S	S
11547	0.447	11	25	3	3	0.3	0.3	0.3
11674	0.128	12.7	12.7	1.33	1.33	S	0.25	S
5165	0.271	12.7	12.7	3.17	3.17	S	S	S
11676	0.379	12.7	25.4	2.38	2.38	S	S	S
11703	0.301	12.75	30	1.6	1.6	S	S	S
1334	0.478	14.3	25.4	5.95	2.4	S	S	S
2506	0.19	15.85	15.85	1.6	1.6	S	S	S
11675	0.162	15.88	15.88	1.33	1.33	S	0.25	S
1983	0.355	15.9	15.9	3.2	3.2	0.4	S	0.4
21880	0.466	16	37	2	2	S	S	S
11847	0.217	19.05	9.53	2.4	2.4	S	S	S
7412	0.331	19.05	12.7	3.2	3.2	S	S	S
2368	0.438	19.05	19.05	3.2	3.2	S	S	S
19815	0.642	19.35	19.35	5	5	2	0.5	2
17004	0.439	20	20	3	3	S	S	S
11435	0.344	20.5	33.5	1.5	1.5	0.25	0.5	0.25
7072	0.526	22.2	22.2	3.2	3.2	S	S	S
11442	0.306	22.2	34.95	1.52	1.52	3.12	1.6	S
11502	0.143	22.8	8	1.5	1.5	1.5	S	0.3
22383	0.271	23.12	12	2.5	2.5	2.5	S	2.5
11319	0.43	24	16	3.2	3.2	S	S	S
11207	0.385	25	25	2	2	S	S	S
17003	0.561	25	25	3	3	S	S	S
3527	0.382	25.4	12.7	3.2	3.2	S	S	S
7425	0.496	25.4	19.05	3.2	3.2	S	S	S
5514	0.82	25.4	38.1	3.17	3.17	S	S	S
11879	1.188	25.4	38.1	4.76	4.76	S	S	S
14721	0.393	25.7	25.5	2	2	S	1	S
11874	0.393	26.4	12.7	3.2	3.2	S	S	S
680	0.628	28.6	25.4	3.17	3.17	S	S	S
11490	0.649	29	48	2	2	2	0.5	F
11515	0.271	30	12	2		0.3	0.3	0.3
10030	0.683	30	30	3	3	S	S	S
11483	0.671	31	49	2	2	2	0.5	F
4776	0.655	31.74	25.4	3.17	3.17	S	S	S
16921	0.157	31.75	3.97	1.59	1.59	S	S	S
2366	0.545	31.75	19.05	3.2	3.2	S	S	S
6940	0.77	31.75	31.75	3.2	3.2	S	S	S
11422	1.094	31.75	50.8	3.18	3.18	0.5	S	0.5
11428	1.199	32	75	2.5	2.5	0.4	0.4	0.4
11586	0.356	34	29	1.5	1.5	1.6	1.3	S

EQUAL CHANNELS

Standards catalogue



Section nº	Kg/m	Sizes (mm)				Radii		
		A	B	T1	T2	exterior	interior	ends
11559	0.758	34	55	2	2	0.3	0.3	0.3
12424	1.64	34	55	4.5	4.5	S	S	S
11678	0.296	34.3	24	1.4	1.4	2	0.6	F
11442	0.306	34.95	22.23	1.52	1.52	3.12	1.6	S
15599	0.615	35.9	19.5	3.5	2.95	S	1	1.5
11318	0.352	37	16	2	2	S	S	S
11593	0.3	38	22	1.4	1.4	S	S	S
6934	0.715	38.1	25.4	3.2	3.2	S	S	S
11679	0.93	38.1	38.1	3.18	3.18	S	S	S
11680	1.352	38.1	38.1	4.76	4.76	S	S	S
11491	0.438	40	10	3	3	0.5	0.5	0.5
15256	0.325	40	12	2	2	S	S	S
11434	0.35	44	20	1.6	1.6	S	S	S
11317	1.558	45	40	5	5	S	S	S
21941	0.339	46	20	1.5	1.5	S	S	S
1047	0.589	46.43	24.6	2.4	2.4	S	S	S
11224	0.997	50	25	4	4	S	S	S
11790	1.539	50	50	4	4	0.2	0.2	0.2
11309	1.897	50	50	5	5	S	S	S
2505	0.82	50.8	25.4	3.2	3.2	S	S	S
3682	1.968	50.8	38.1	6.35	6.35	S	S	S
7051	1.266	50.8	50.8	3.2	3.2	S	S	S
4300	2.404	50.8	50.8	6.35	6.35	0.2	0.2	0.2
12208	0.77	57.15	19.05	3.2	3.2	S	S	S
17047	1.762	60	40	5	5	S	S	S
18469	2.168	60	55	5	5	S	S	S
7062	0.935	63.5	25.4	3.2	3.2	S	S	S
21609	1.049	72	64	2	2	4	2	S
11355	0.764	75	35	2	2	0.25	0.25	0.25
1617	1.038	76.2	25.4	3.2	3.2	S	S	S
11334	1.266	76.2	38.1	3.2	3.2	S	S	S
11851	1.842	76.2	38.1	4.76	4.76	0.5	S	0.5
7415	1.485	76.2	50.8	3.2	3.2	S	S	S
4502	2.841	76.2	50.8	6.35	6.35	S	S	S
11307	2.295	82.55	31.75	6.35	6.35	S	S	S
1593	0.648	88.2	25.4	1.65	2.05	0.65	0.65	0.65
15736	2.38	92.4	33	6	6	0.25	0.25	0.25
9859	0.821	100	36	1.8	1.8	S	S	S
17046	1.864	100	40	4	4	S	S	S
6811	3.28	101.6	50.8	6.35	6.35	S	S	S
21829	3.057	120	40	6	6	S	S	S
11440	4.276	125	75	6	6	S	S	S



Section nº	Kg/m	Sizes (mm)				Radii		
		A	B	T1	T2	exterior	interior	ends
3063	4.187	127	50.8	6.35	7.9	S	9.15	S
11459	2.634	178	76	3	3	0.4	S	S

Exlabesa Extrusion Doncaster Ltd.

Ogden Road - Wheatley Hills
DONCASTER DN2 4SG
Tel. 01302 762500 Fax 01302 762557
www.exlabesa.co.uk



QUALICOAT
ISO 9001
PAS 24:2016

EXLABESA
INDUSTRY

10

UNEQUAL CHANNELS

References
Weight
Size

Exlabesa Extrusion Doncaster Ltd.

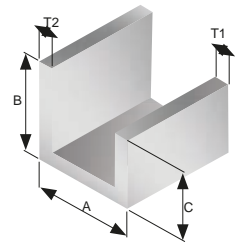
Ogden Road - Wheatley Hills
DONCASTER DN2 4SG
Tel. 01302 762500 Fax 01302 762557
www.exlabesa.co.uk



QUALICOAT
ISO 9001
PAS 24:2016

UNEQUAL CHANNELS

Standards catalogue



Section nº	Kg/m	Sizes (mm)					Radii		
		A	B	C	T1	T2	exterior	interior	ends
11548	0.366	11	25	15	3	3	S	S	S
11449	0.437	11.1	28.6	17.5	3.18	3.18	0.4	S	S
11376	0.33	20	25	20	2	2	S	S	S
11412	1.463	75	46	65	3	3	0.4	S	S

Exlabesa Extrusion Doncaster Ltd.

Ogden Road - Wheatley Hills
DONCASTER DN2 4SG
Tel. 01302 762500 Fax 01302 762557
www.exlabesa.co.uk



QUALICOAT
ISO 9001
PAS 24:2016

EXLABESA
INDUSTRY

11

I SECTIONS

Vierteaguas
Umbral
Refuerzo

Exlabesa Extrusion Doncaster Ltd.

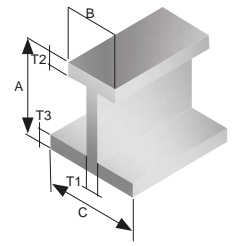
Ogden Road - Wheatley Hills
DONCASTER DN2 4SG
Tel. 01302 762500 Fax 01302 762557
www.exlabesa.co.uk



QUALICOAT
ISO 9001
PAS 24:2016

I SECTIONS

Standards catalogue



Section nº	Kg/m	Sizes (mm)						Radii	
		A	B	C	T1	T2	T3	exterior	interior
11361	0.829	32	38	38	3	3		S	S
11458	0.623	36.45	41.28	41.28	2	2	2	S	S
19487	0.382	50	35	35	1.2	1.2		S	S
11377	0.446	75	32	32	1.2	1.2		S	0.8

Exlabesa Extrusion Doncaster Ltd.

Ogden Road - Wheatley Hills
DONCASTER DN2 4SG
Tel. 01302 762500 Fax 01302 762557
www.exlabesa.co.uk



QUALICOAT
ISO 9001
PAS 24:2016

EXLABESA
INDUSTRY

12

T SECTIONS

References
Weight
Size

Exlabesa Extrusion Doncaster Ltd.

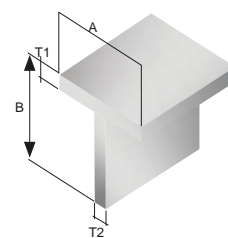
Ogden Road - Wheatley Hills
DONCASTER DN2 4SG
Tel. 01302 762500 Fax 01302 762557
www.exlabesa.co.uk



QUALICOAT
ISO 9001
PAS 24:2016

T SECTIONS

Standards catalogue



Section nº	Kg/m	Sizes (mm)				Radii	
		A	B	T2	T3	exterior	interior
11263	0.206	20	20	2	2	S	S
22114	0.226	20	30	1.73	1.73	S	S
11314	0.382	25	25	3	3	S	S
11310	0.382	25	25	3	3	S	S
11596	0.26	29.5	10.5	2.5	3.4	S	S
22255	0.369	30	40	2	2	S	S
11339	0.523	31.8	31.75	3.2	3.2	S	S
16444	0.968	33.3	18	6	13.2	S	S
TE03801	0.629	38.1	38.1	3.18	3.18	S	S
2494	0.628	38.1	38.1	3.2	3.2	S	S
22192	0.369	40	30	2	2	S	S
2403	0.846	50.8	50.8	3.2	3.2	S	S
2372	1.64	50.8	50.8	6.35	6.35	S	S
2513	2.52	76.2	76.2	6.35	6.35	S	S
11387	0.911	80	35	3	3	0.25	0.8
11606	0.661	80	44	2	2	S	S
TE10101	2.513	102	50.8	6.35	6.35	FUL	2

Exlabesa Extrusion Doncaster Ltd.

Ogden Road - Wheatley Hills
DONCASTER DN2 4SG
Tel. 01302 762500 Fax 01302 762557
www.exlabesa.co.uk



QUALICOAT
ISO 9001
PAS 24:2016

EXLABESA
INDUSTRY

13

TOP HAT SECTIONS

Vierteaguas
Umbral
Refuerzo

Exlabesa Extrusion Doncaster Ltd.

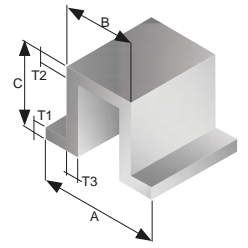
Ogden Road - Wheatley Hills
DONCASTER DN2 4SG
Tel. 01302 762500 Fax 01302 762557
www.exlabesa.co.uk



QUALICOAT
ISO 9001
PAS 24:2016

TOP HAT SECTIONS

Standards catalogue



Section n°	Kg/m	Sizes (mm)						Radii	
		A	B	C	T1	T2	T3	exterior	interior
11498	0.794	63.5	25	31.75	2.4	2.4	2.4	0.5	S
11433	0.676	75	46	15	2.5	2.5	2.5	S	S

Exlabesa Extrusion Doncaster Ltd.

Ogden Road - Wheatley Hills
DONCASTER DN2 4SG
Tel. 01302 762500 Fax 01302 762557
www.exlabesa.co.uk



QUALICOAT
ISO 9001
PAS 24:2016

EXLABESA
INDUSTRY

14

Z SECTIONS

References
Weight
Size

Exlabesa Extrusion Doncaster Ltd.

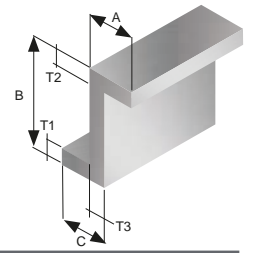
Ogden Road - Wheatley Hills
DONCASTER DN2 4SG
Tel. 01302 762500 Fax 01302 762557
www.exlabesa.co.uk



QUALICOAT
ISO 9001
PAS 24:2016

Z SECTIONS

Standards catalogue



Section n°	Kg/m	Sizes (mm)						Radii	
		A	B	C	T1	T2	T3	exterior	interior

Notes

Finishes and colours

Creative freedom for your projects



Our wide range of colours and finishes for aluminium, *Colours by Exlabesa*, will allow you to design with total creative freedom giving your projects a completely personalised finish.

Powder-coating colour options are unlimited and available in different finishes such as gloss, textured, matt or wood while in the anodised range we offer silver finish as standard.

Furthermore, both powder-coating and anodising processes have the highest quality guarantees certified by Qualicoat and Qualanod respectively.

colours





Exlabesa Extrusion Doncaster Ltd.

Ogden Road - Wheatley Hills
DONCASTER DN2 4SG
Tel. 01302 762500 Fax 01302 762557
www.exlabesa.co.uk

QUALICOAT | ISO 9001 | PAS 24:2016

